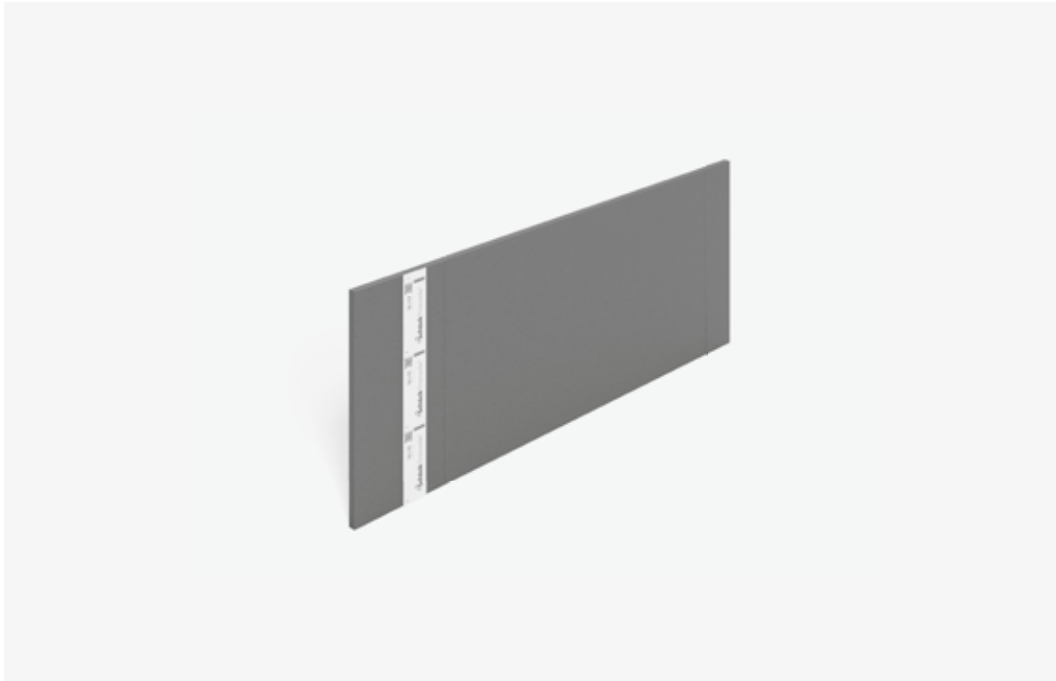


Schöck Tronsole® type L



Schöck Tronsole® type L (joint formation)

Serves the acoustic bridge-free formation of the joints between stair flight resp. landing and staircase wall. It can be applied with in-situ concrete as well as prefabricated construction.

The Tronsole® type L is also available in the soundproofing packet (See page 161).

Product characteristics | Product design | Product selection | Type designations

i Product characteristics

- ▶ Optimum impact sound protection through avoidance of acoustic bridges in the area of joints
- ▶ High quality and easily cut PE foam panels
- ▶ Stable material, no damage during construction progress
- ▶ Secure attachment using adhesive assembly tape

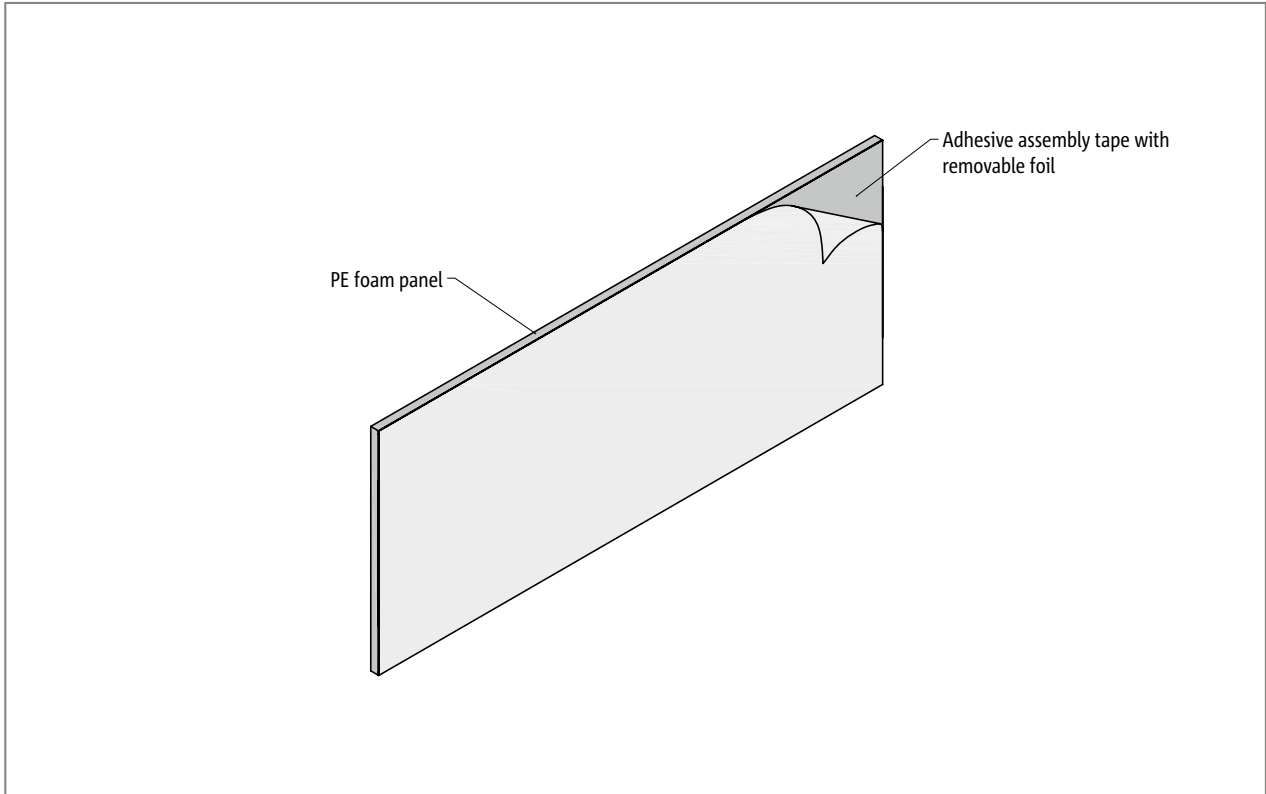


Fig. 147: Schöck Tronsole® type L

Schöck Tronsole® type L variants

The design of the Schöck Tronsole® type L can vary as follows:

- ▶ Height:
for landing: H = 250 mm and for stair flights H = 420 mm

Type designation in planning documents

Type
Height
L-250

L

Installation cross sections

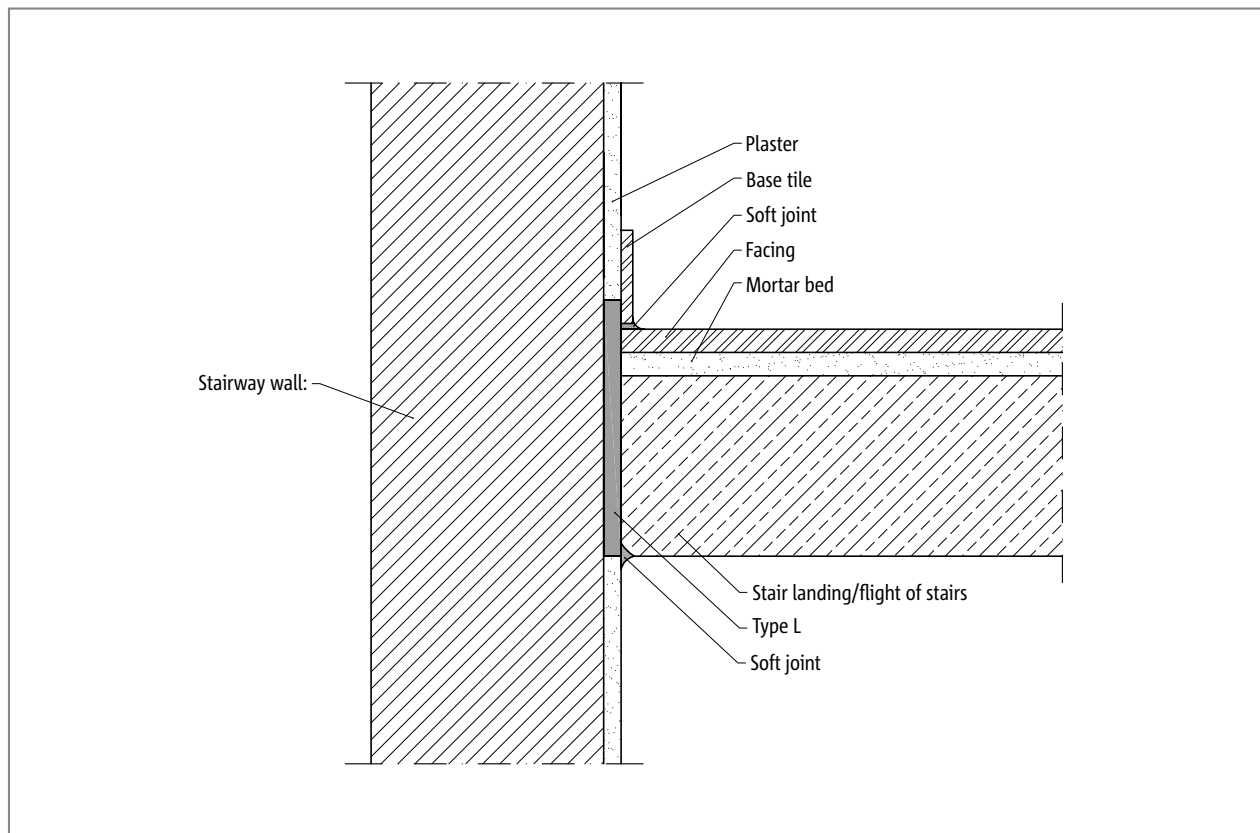


Fig. 148: Schöck Tronsole® type L: Installation cross-section in-situ concrete stairs

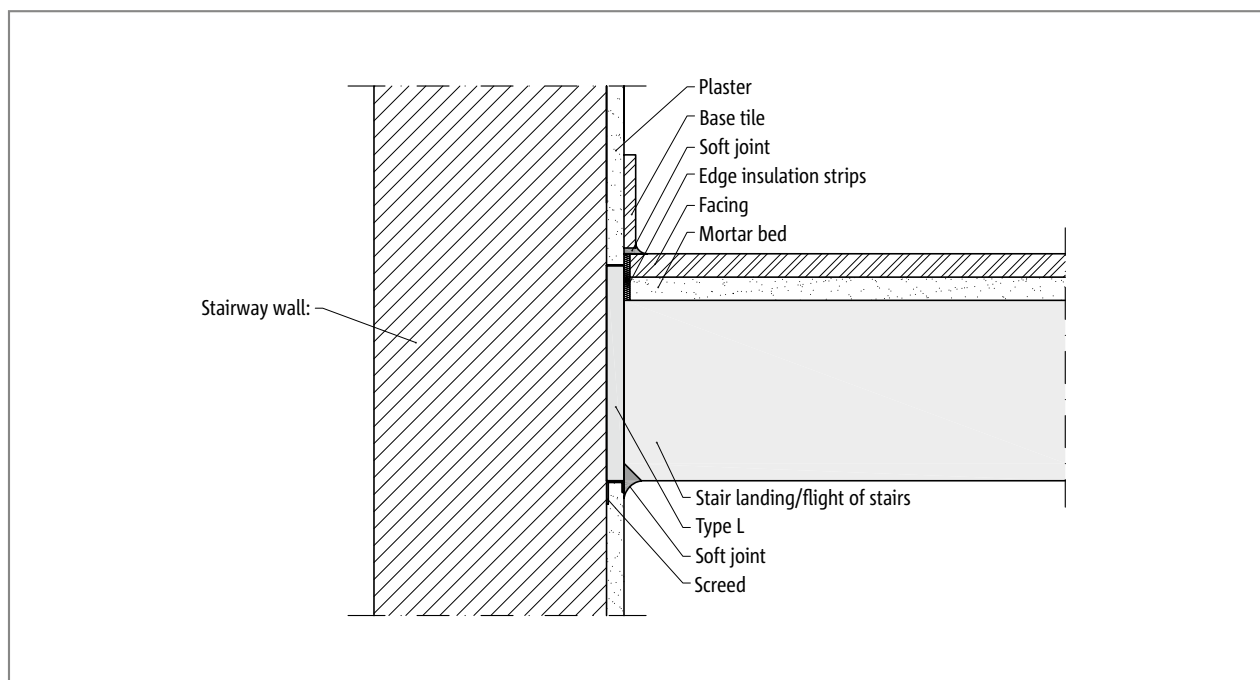


Fig. 149: Schöck Tronsole® type L: Installation cross-section precast landing

Element arrangement

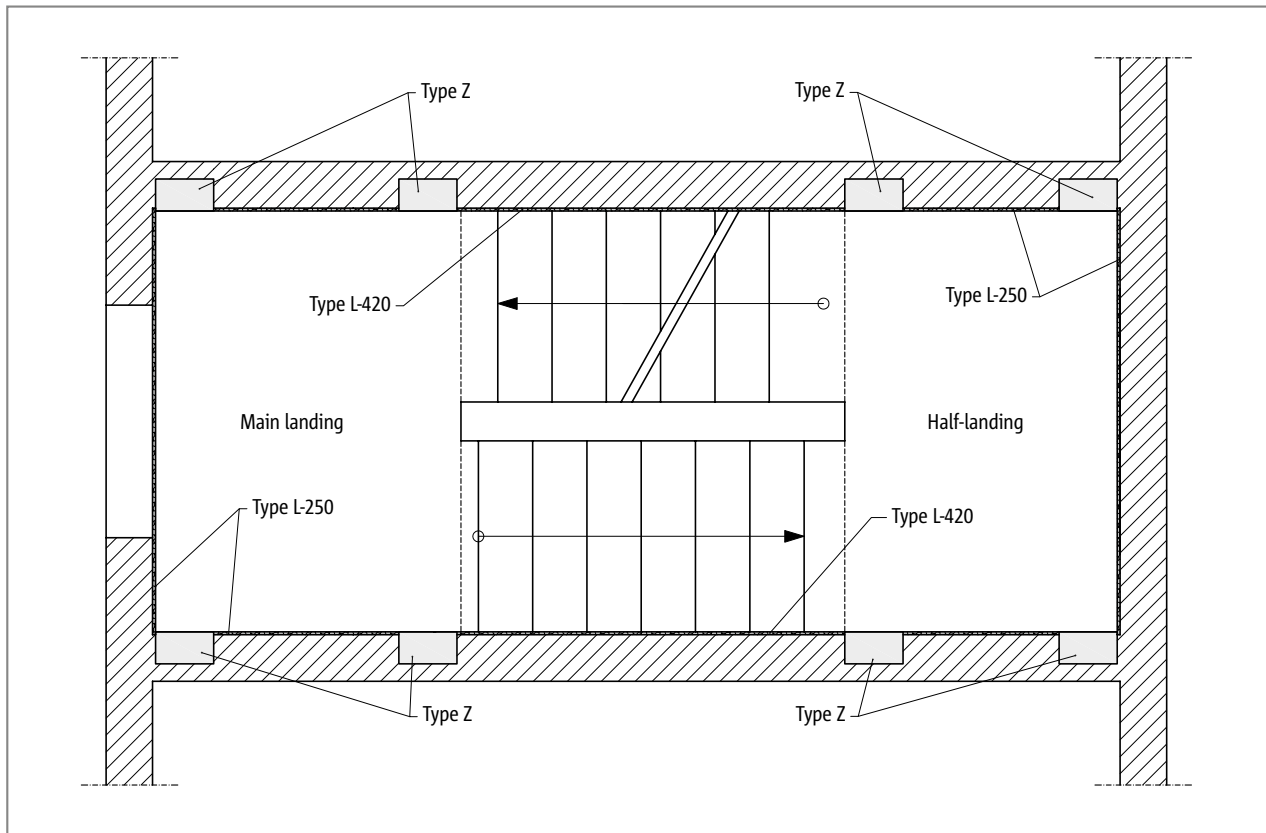


Fig. 150: Schöck Tronsole® type L-250 and type L-420: Soundproofing solution for stair flights and landings with the inclusion of the Tronsole® type Z

i Element arrangement

- ▶ The Schöck Tronsole® type L can be combined with every other Schöck Tronsole® type.

Element arrangement

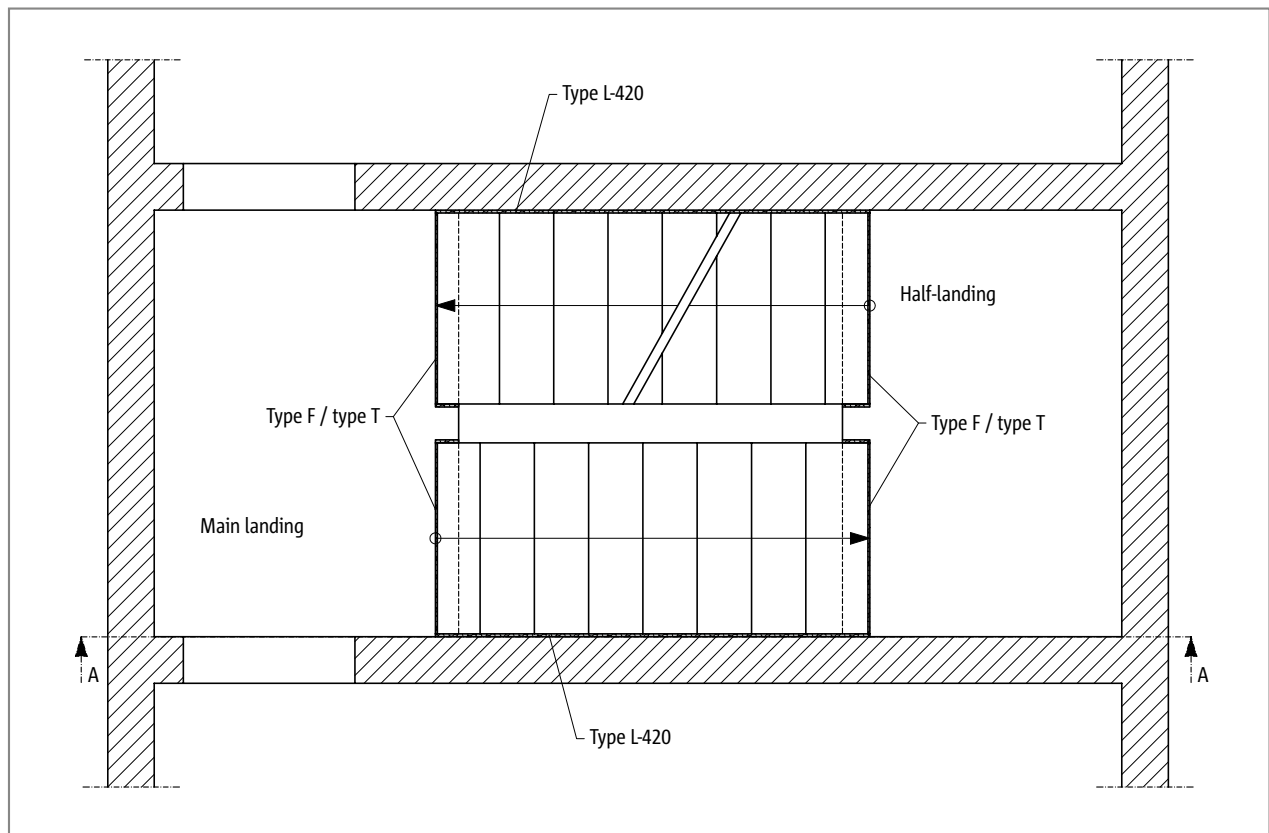


Fig. 151: Schöck Tronsole® type L-420: Soundproofing solution for stair flights with the inclusion of the Tronsole® type F or type T

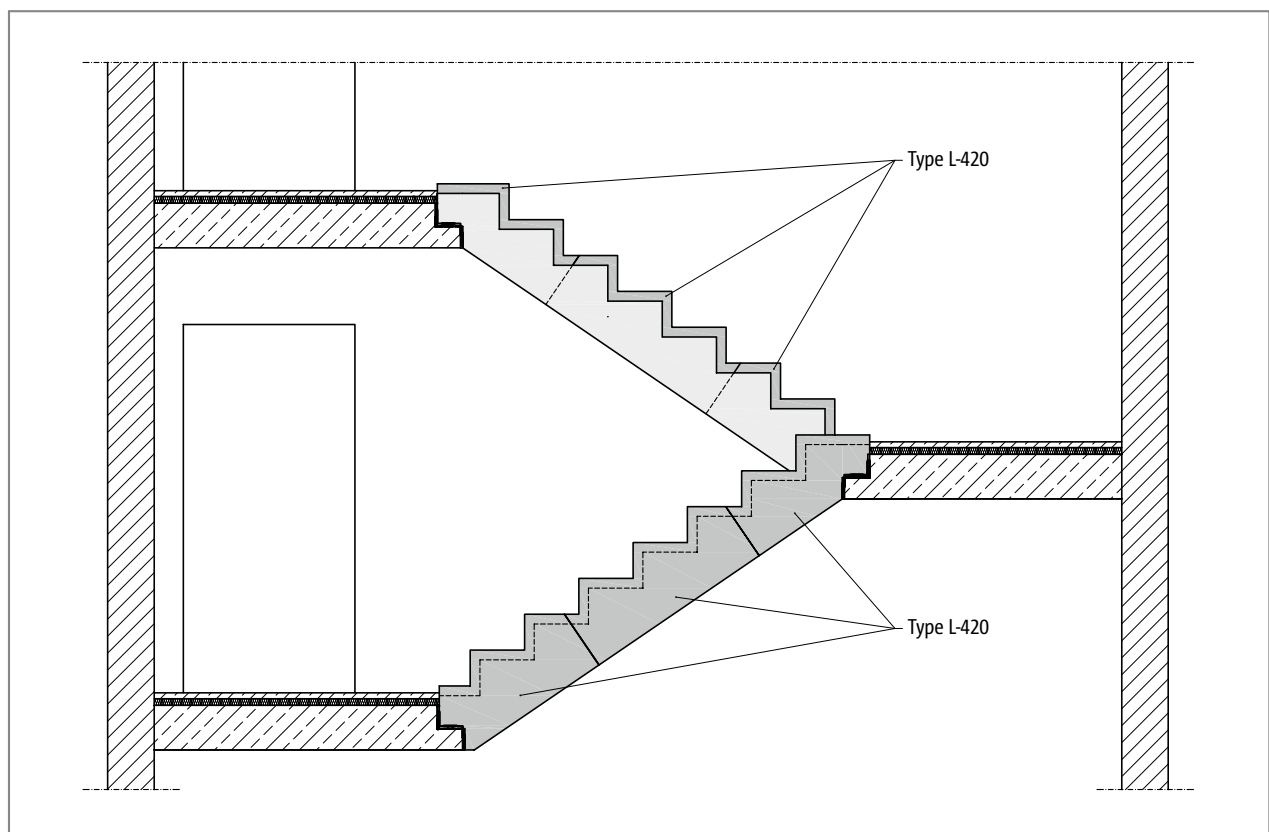


Fig. 152: Schöck Tronsole® type L-420: Element arrangement, Section A-A

Product description | Precast construction | Fire protection

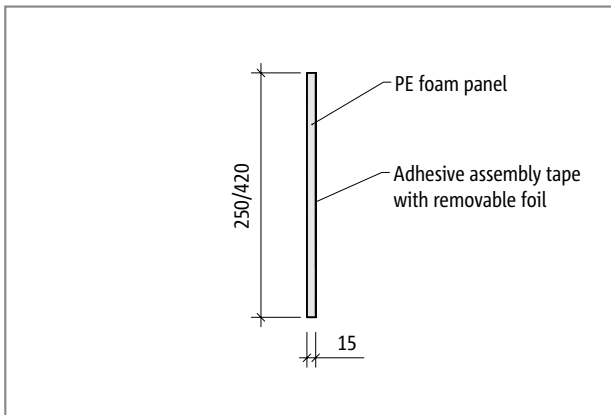


Fig. 153: Schöck Tronsole® type L-250 resp. L-420: Product section

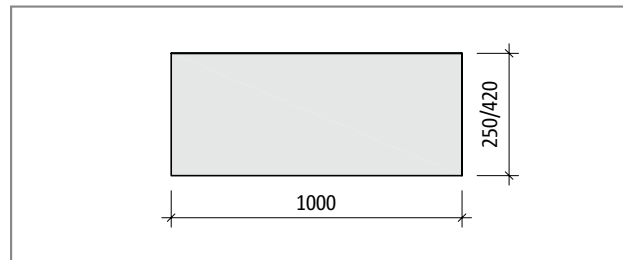


Fig. 154: Schöck Tronsole® type L-250 resp. L-420: Product layout

i Product information

- ▶ The Tronsole® type L is also available as soundproofing packet
- ▶ The Tronsole® type L transmits no statically relevant forces.
- ▶ The Schöck Tronsole® type L is offered with the length $L = 1000$ mm.

Precast part construction

If prefabricated stair flights are to be installed between two opposite walls, a dimensional tolerance must be specified by the planner. If, for example, a wall at the site of the stair flight is required, a space of at least 20 mm is to be planned between the stair strings and the enclosing walls, although the Schöck Tronsole® type L is only 15 mm thick. This allows the smooth installation of prefabricated stair flights using affixed Tronsole® type L.

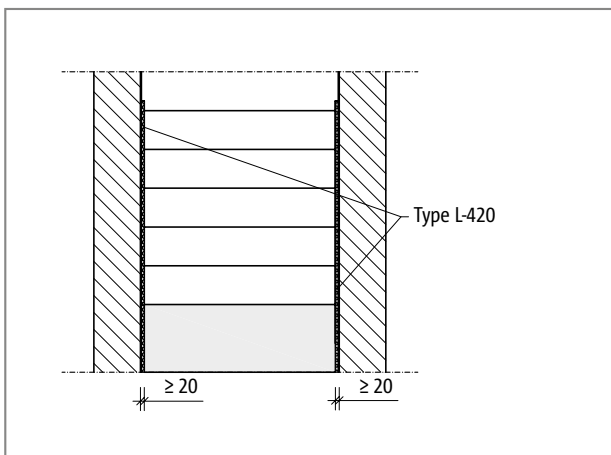


Fig. 155: Schöck Tronsole® type L-420: Taking into account installation tolerances

Fire protection

With the Tronsole® type L it is a matter of a static, non-relevant, impact soundproofing element.

i Fire protection

- ▶ The Tronsole® type L conforms with building materials class B2 according to DIN 4102.

Materials | Soundproofing packet | Installation instructions | Installation

Materials and construction materials

Schöck Tronsole® type L	Material
PE foam panel	PE foam according to DIN EN 14313

Schöck Tronsole® type L	Physical properties
Dynamic stiffness in accordance with DIN EN 29052-1	90 MN/m ³
Unit weight in accordance with DIN EN ISO 845	28 kg/m ³
Water take-up after 7 days	< 1 Vol.-%

Soundproofing packet

The soundproofing packet is a coordinated system packet with all necessary installation aids. The supplied adhesive tape for the sealing adhesion of the joint slab butt points simplifies the acoustic bridge-free installation of the Schöck Tronsole® type L. The soundproofing packet completes the impact sound insulation solution in the stair well and is component part of the soundproofing system.

The soundproofing packet consists of:

- ▶ 15 Schöck Tronsole® type L-250 resp. L-420
- ▶ 20 m adhesive tape (1 roll)
- ▶ 1 suitable cutting tool (cutter)
- ▶ 1 pencil
- ▶ 1 installation instruction

i Installation manual

As the Schöck Tronsole® type L is combined with a force transmitting Tronsole®, the installation instructions for the Tronsole® type L are presented in exemplary combinations in all further product sections.

i Installation

- ▶ The Schöck Tronsole® type L is bonded to the dry and dust-free structural component with the aid of an own-product double-sided assembly adhesive tape. With this, it is matter of a prefabricated stair flight resp. with the staircase wall when it is in-situ concrete stairs.
- ▶ The PE foam panels can be cut by hand using a simple cutting tool.
- ▶ The Tronsole® type L closes the joint between stair string resp. landing and wall maintaining a joint width of 15 mm.

L

Check list

- With the planning of prefabricated components is the Tronsole® type L given, is there a sufficiently wide joint between stair flight or landing and staircase wall?
- Are the dimensions of the Schöck Tronsole® matched to the geometry of the structural components which are to be insulated?
- Have the requirements with regard to fire protection been cleared and announced?
- Due to a fire protection requirement are larger concrete covers and larger structural component heights taken into account?

