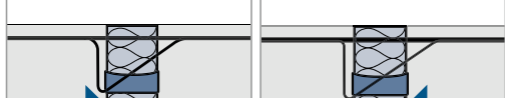
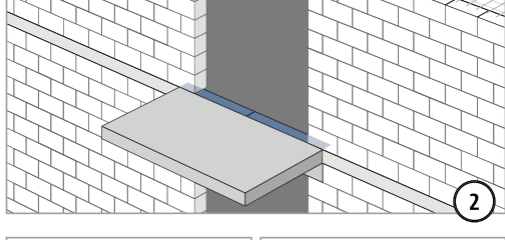
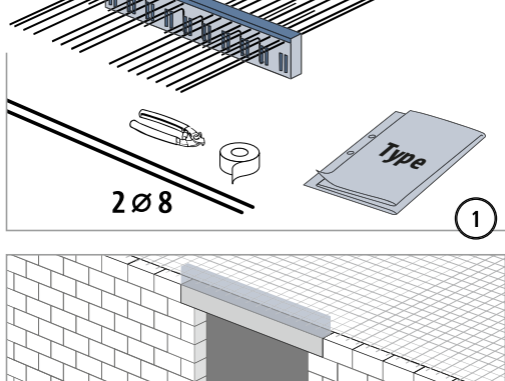


## Isokorb® XT/T type K

### Instructions de mise en œuvre

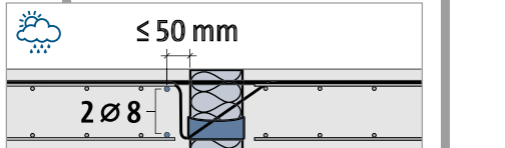
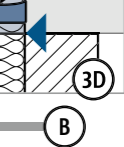
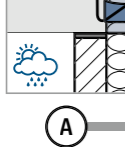
Type K

Type ✓

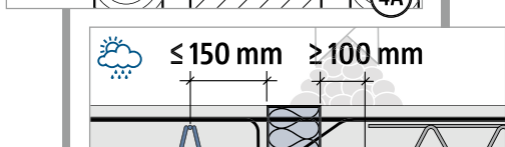


A

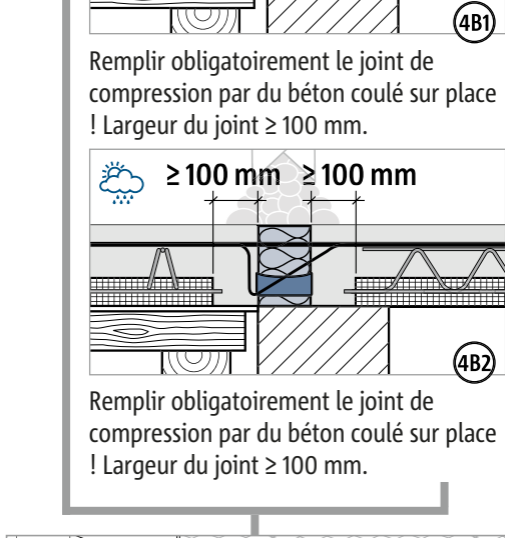
B



Remplir obligatoirement le joint de compression par du béton coulé sur place ! Largeur du joint ≥ 100 mm.



Remplir obligatoirement le joint de compression par du béton coulé sur place ! Largeur du joint ≥ 100 mm.



Surélever le coffrage selon le plan d'exécution.

