

# Certificate

## Certified Passive House Component

for cool, temperate climate, valid until 31.12.2024

Passive House Institute  
Dr. Wolfgang Feist  
64283 Darmstadt  
GERMANY

Category: **Balcony connection**  
**Slab thickness 180 - 220 mm**  
Manufacturer: **Schöck Bauteile GmbH**  
**76534 Baden-Baden, GERMANY**  
Product name: **Schöck Isokorb® XT Typ SQ**  
**Schöck Isokorb® XT Typ SK**

The following criteria were used in awarding this certificate:

### Efficiency Criterion

In two typical applications\*, the construction fulfills the requirement of

$$\Delta U_{WB} \leq 0.010 \text{ W/(m}^2\text{K)}$$

### Comfort Criterion

The inner surface must be warm enough to prevent mould as well as uncomfortable down-draught and radiation losses.

$$\theta_{i,\min} \geq 17^\circ\text{C}$$

Following heat transmission coefficients  $\chi$  [W/K] and surface temperatures  $\theta_{i,\min}$  [°C] have been validated:

| Product        | Slab thickness [mm] | $\chi$ [W/K] | $\theta_{i,\min}$ [°C] |
|----------------|---------------------|--------------|------------------------|
| XT Typ SQ-V1   | 180                 | 0.062        | 19.09                  |
| XT Typ SQ-V1   | 220                 | 0.064        | 19.05                  |
| XT Typ SQ-V2   | 180                 | 0.068        | 19.04                  |
| XT Typ SQ-V2   | 220                 | 0.069        | 19.02                  |
| XT Typ SQ-V3   | 180                 | 0.072        | 19.01                  |
| XT Typ SQ-V3   | 220                 | 0.075        | 18.99                  |
| XT Typ SK-M1V1 | 180                 | 0.085        | 19.01                  |
| XT Typ SK-M1V1 | 220                 | 0.089        | 18.96                  |

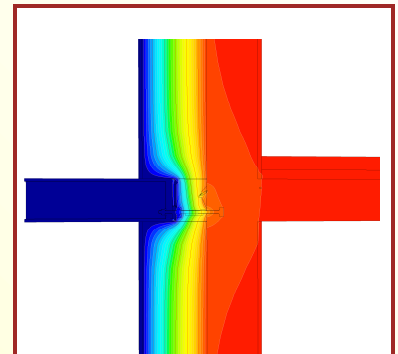
\* The criterion was validated on both, a row house and a apartment dwelling.

(according to criteria "balcony connection" v2.1.1)

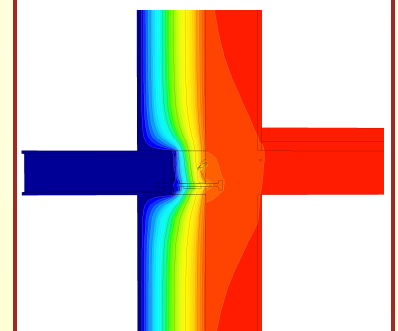
The certificate includes types with minor statical performance.

Thermal bridge coefficients can be approximated by linear interpolation.

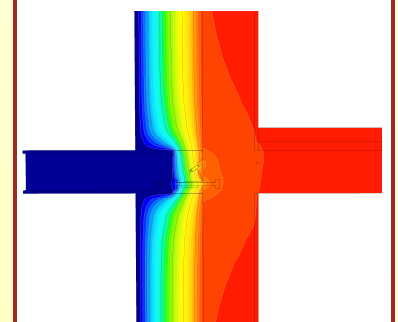
[www.passivehouse.com](http://www.passivehouse.com)



Isothermal map of the  
XT Typ SQ-V1  
- H180



Isothermal map of the  
XT Typ SQ-V2  
- H180



Isothermal map of the  
XT Typ SQ-V3 - H180

cool, temperate climate



**CERTIFIED  
COMPONENT**

Passive House Institute