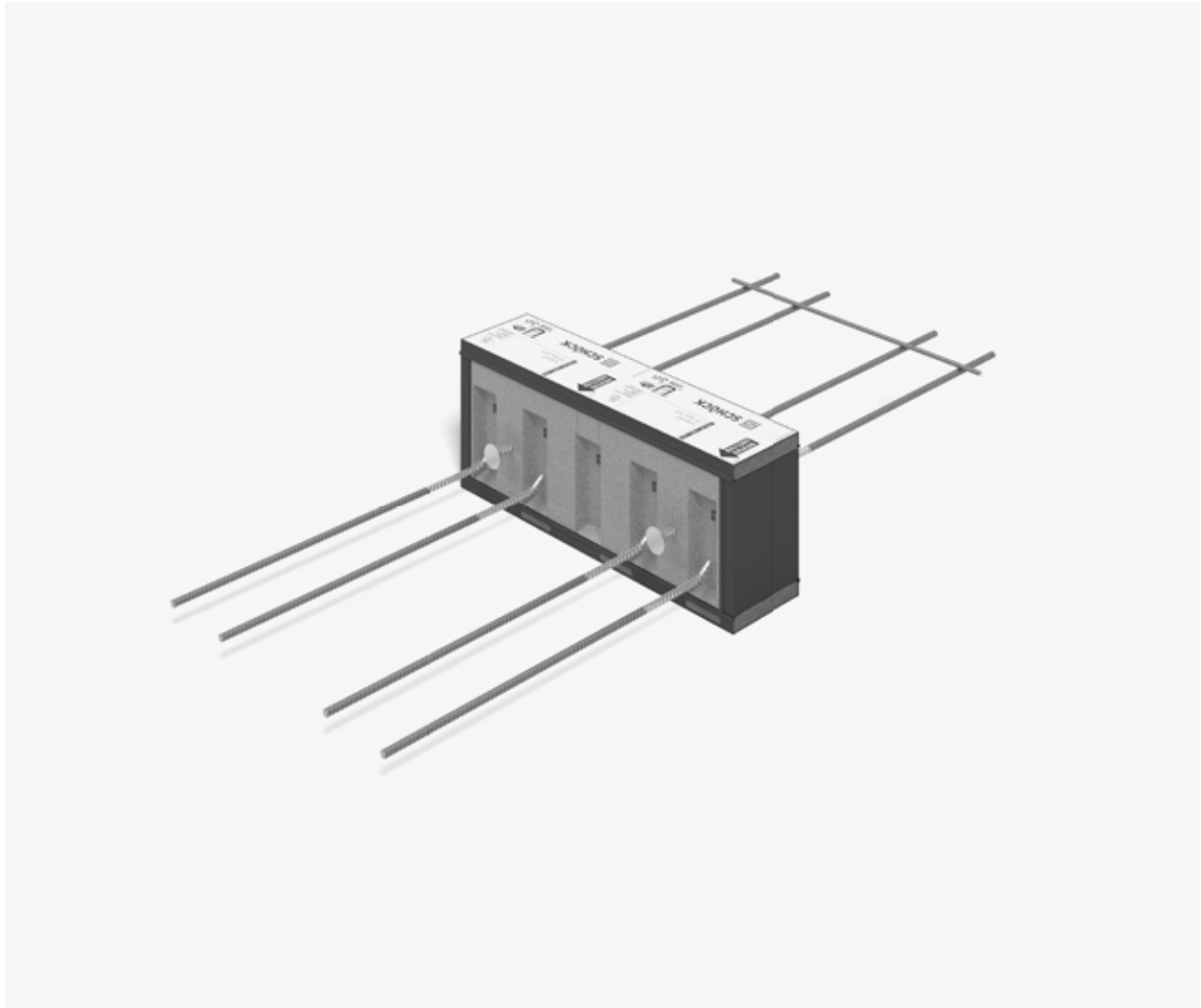


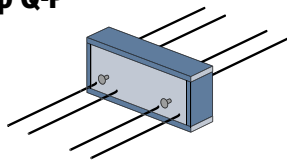
Schöck Isokorb® XT/T Typ Q-P

XT/T
Typ Q-P

Stahlbeton – Stahlbeton

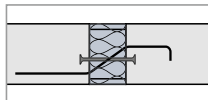
Einbauanleitung

Typ Q-P

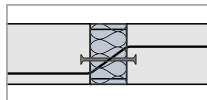


Typ ✓

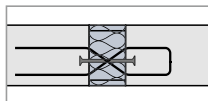
V1-V4



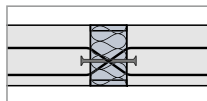
V5-V16



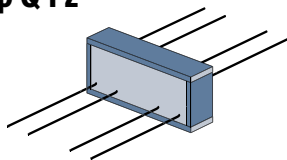
VV1-VV4



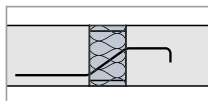
VV5-VV16



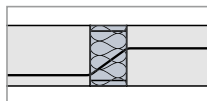
Typ Q-PZ



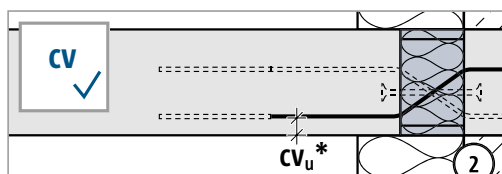
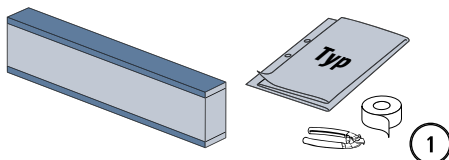
V1-V4



V5-V16



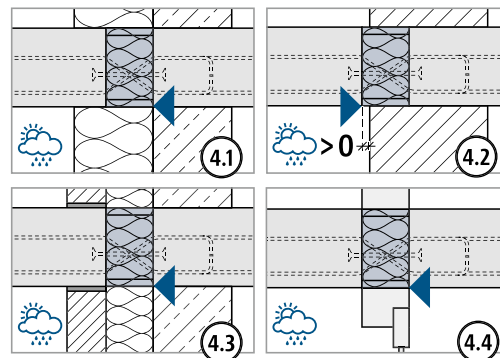
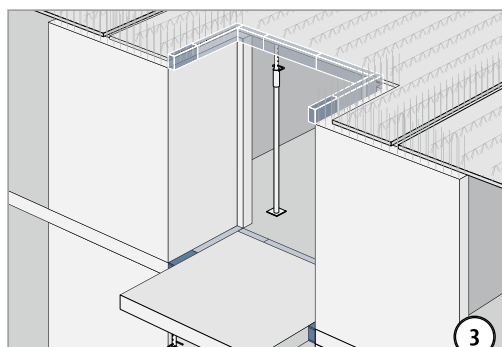
+ Typ Z



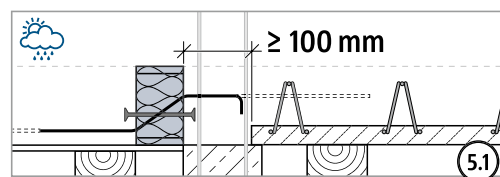
* CV30 / CV40 / CV50 / CV60



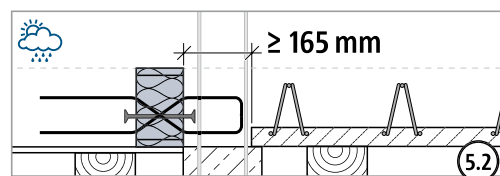
Betondeckung CV gemäß Vorgaben des Tragwerksplaners bzw. der Planungsunterlagen.



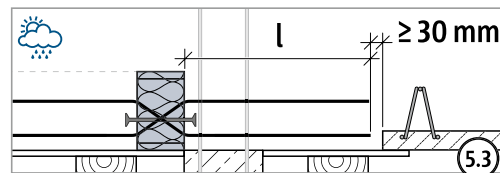
Typ Q-P (V1-V16)



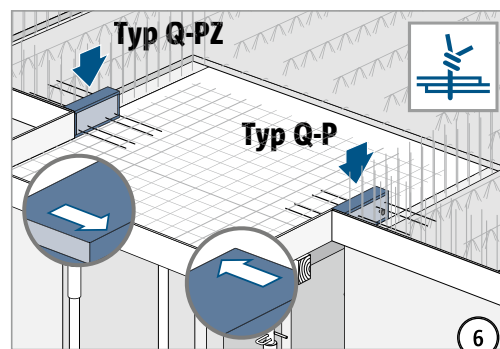
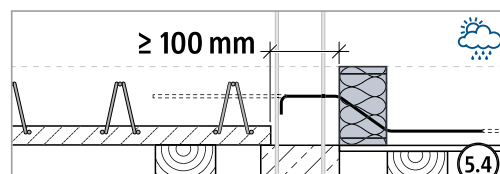
Typ Q-P (VV1-VV4)



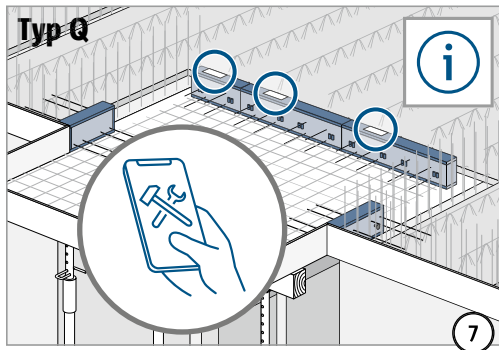
Typ Q-P (VV5-VV16)



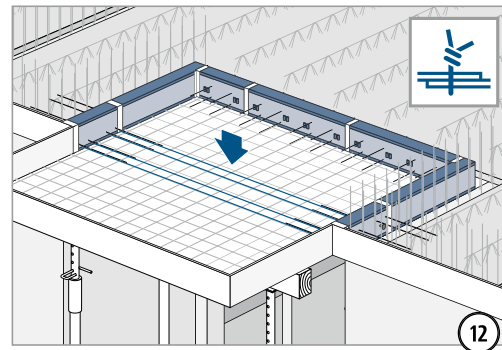
Typ Q-PZ (V1-V16)



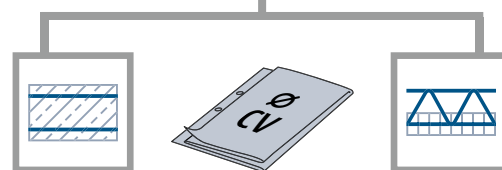
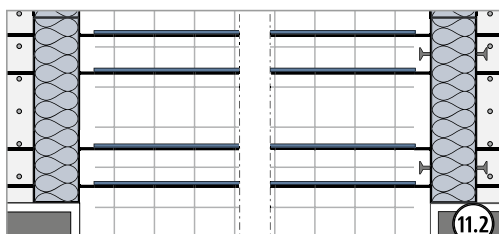
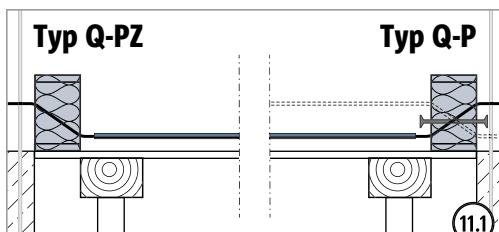
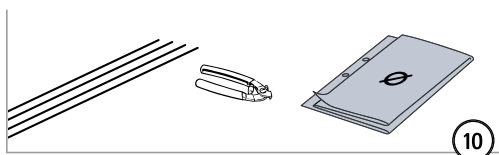
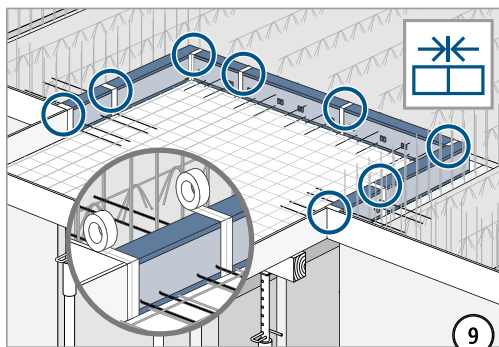
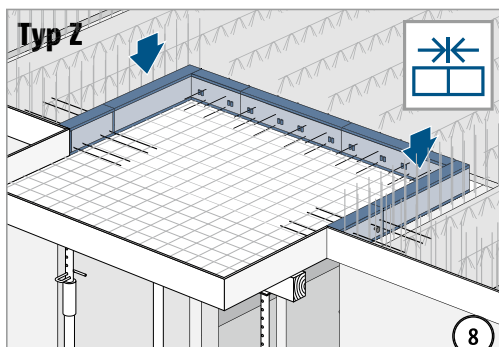
Einbauanleitung



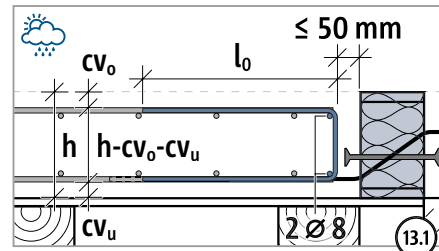
QR-Code auf dem Produktetikett scannen und Einbauanleitung befolgen.



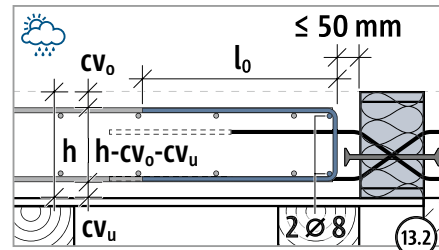
Balkenansicht



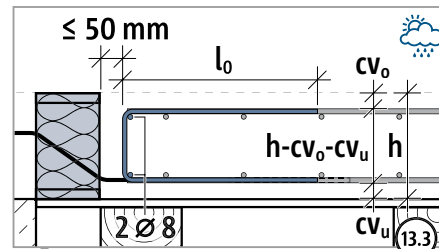
Typ Q-P (V1-V16)



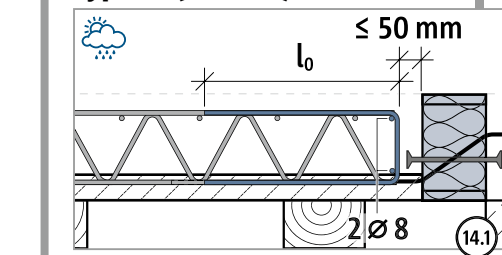
Typ Q-P (VV1-VV16)



Typ Q-PZ (V1-V16)



Typ Q-P (V1-V16)



XT/T
Typ Q-P

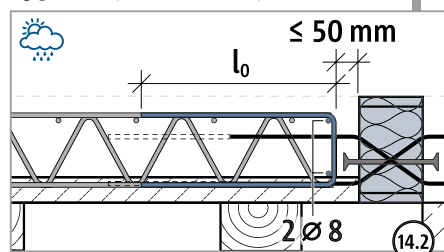
Stahlbeton – Stahlbeton

Einbauanleitung

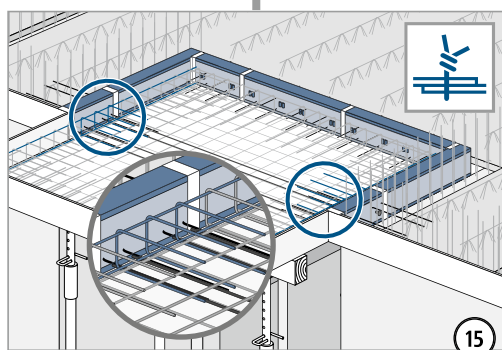
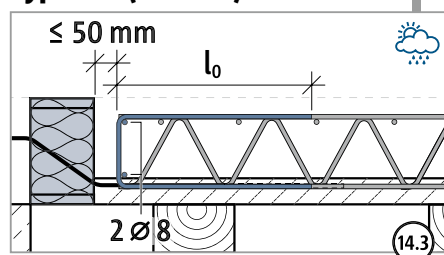
XT/T
Typ Q-P

Stahlbeton – Stahlbeton

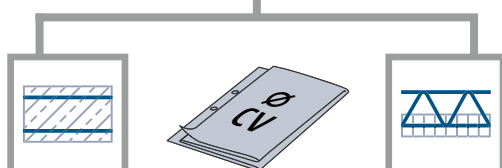
Typ Q-P (VV1–VV16)



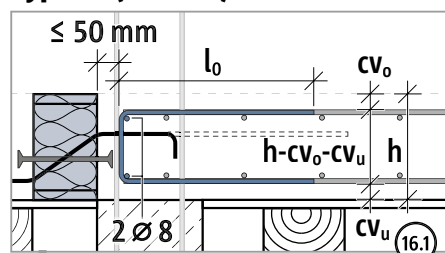
Typ Q-PZ (V1–V16)



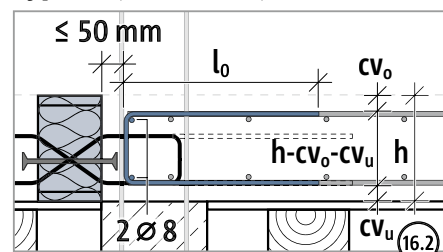
Deckenseite



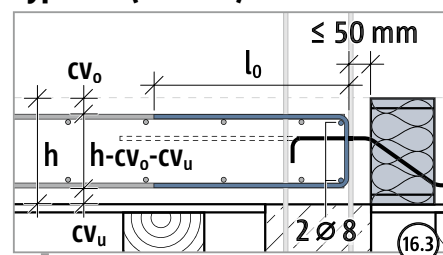
Typ Q-P (V1–V16)



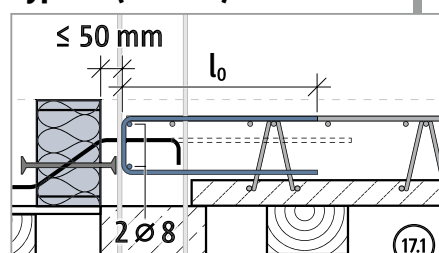
Typ Q-P (VV1–VV16)



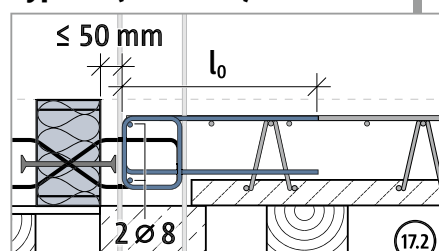
Typ Q-PZ (V1–V16)



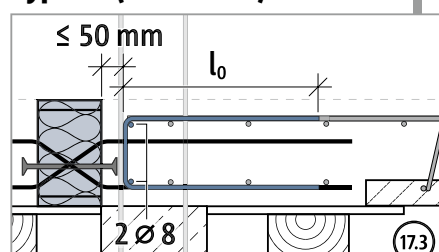
Typ Q-P (V1–V16)



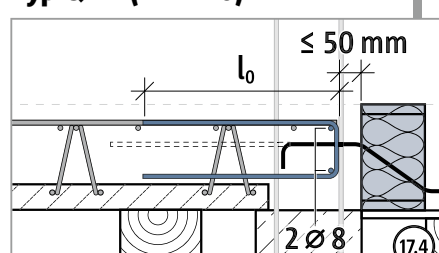
Typ Q-P (VV1–VV4)



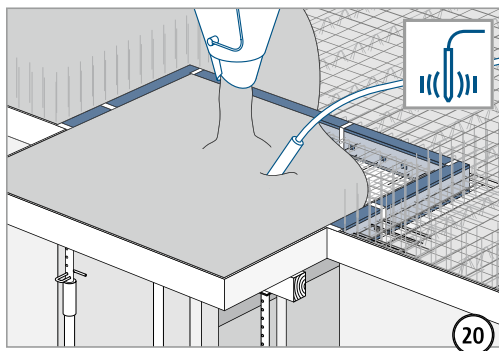
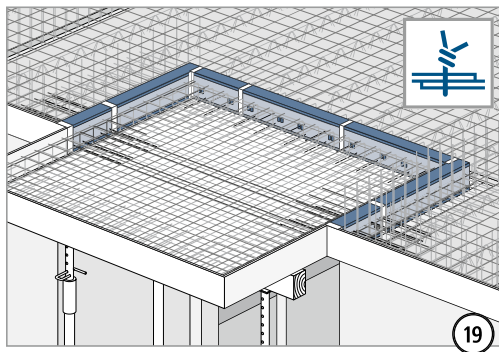
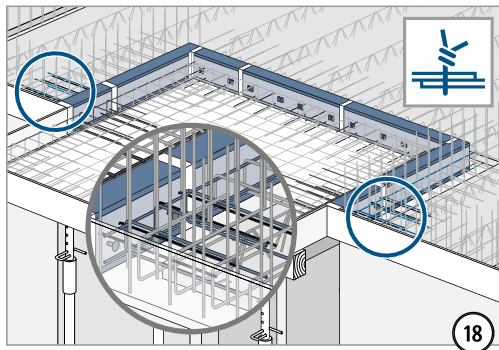
Typ Q-P (VV5–VV16)



Typ Q-PZ (V1–V16)



Einbauanleitung



XT/T
Typ Q-P

Stahlbeton – Stahlbeton

