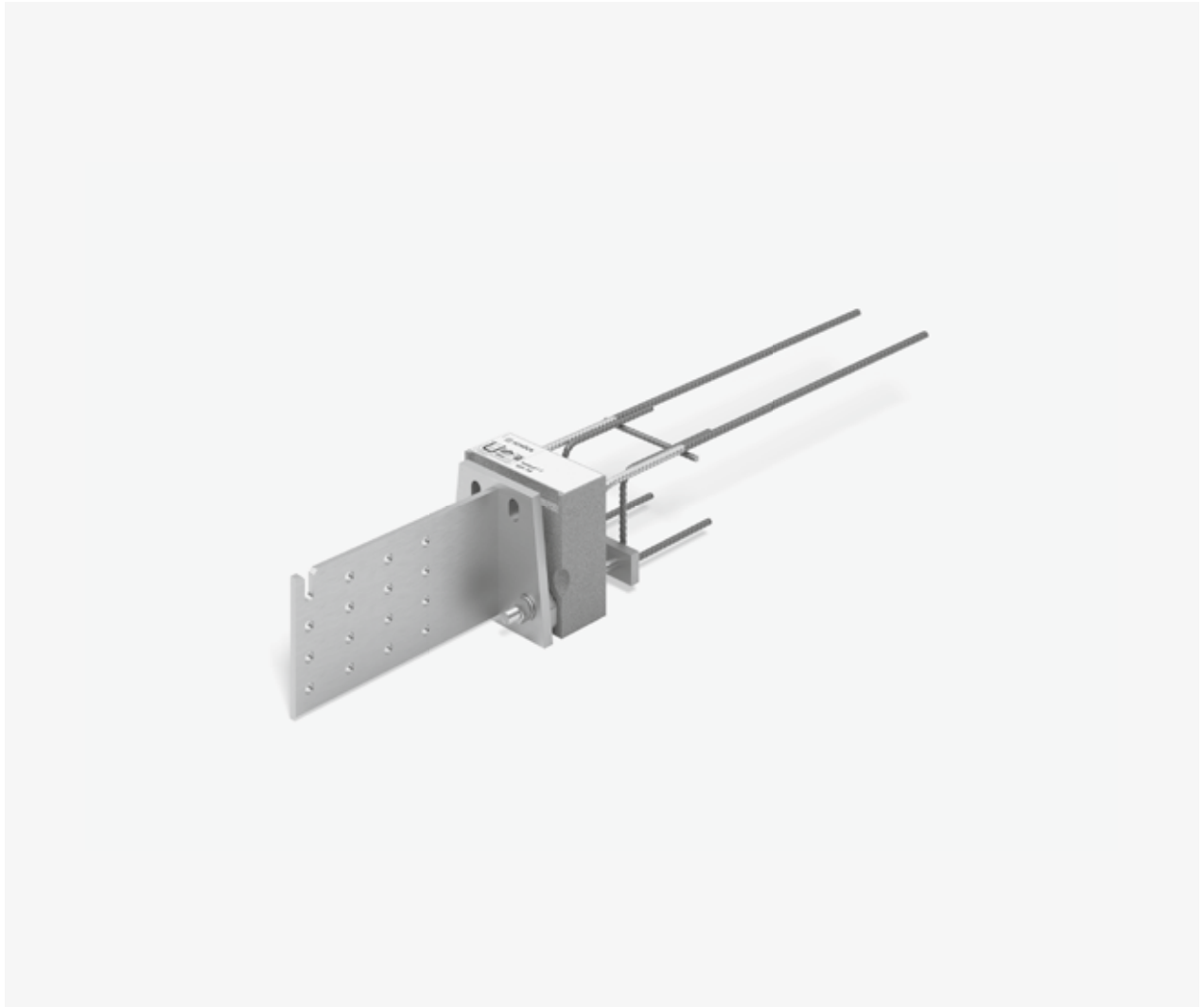


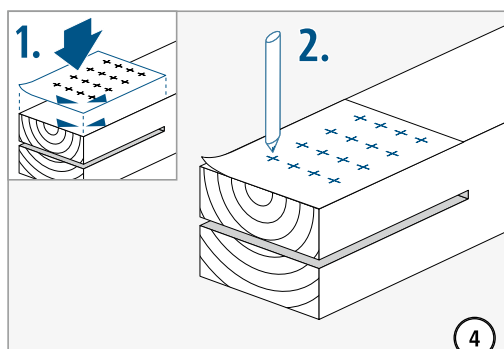
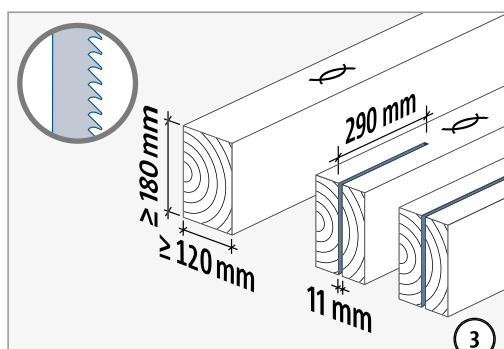
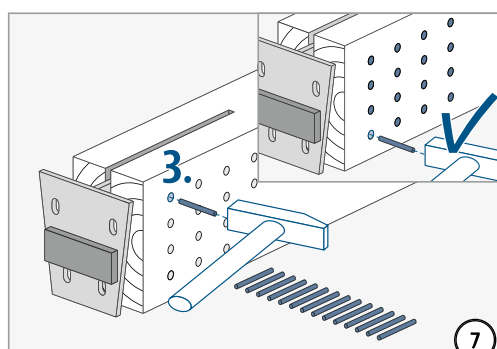
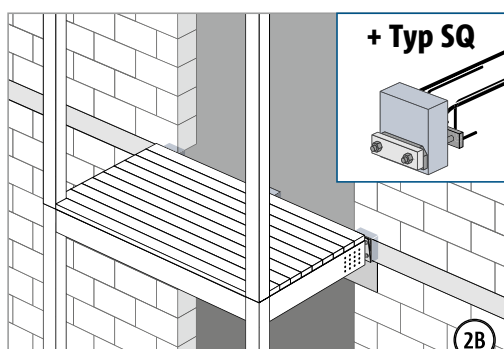
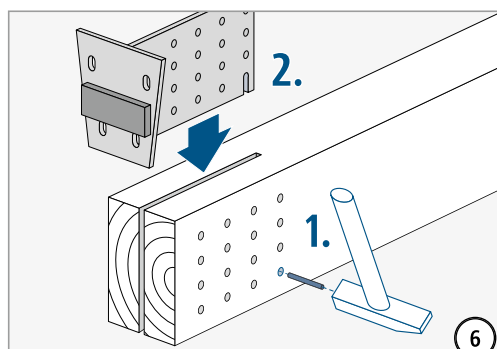
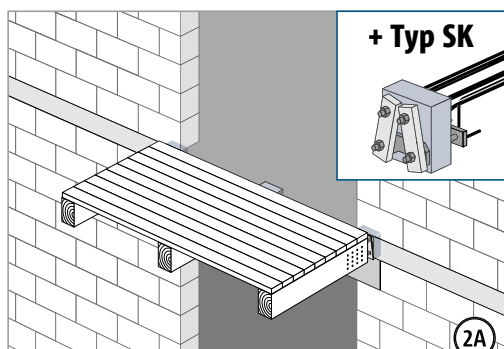
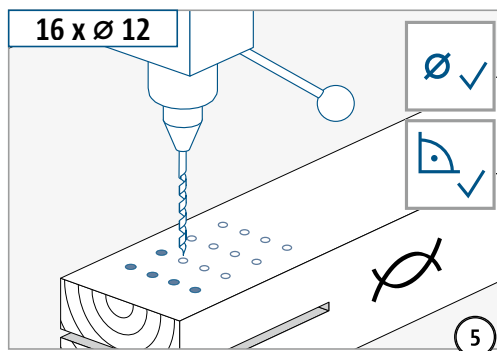
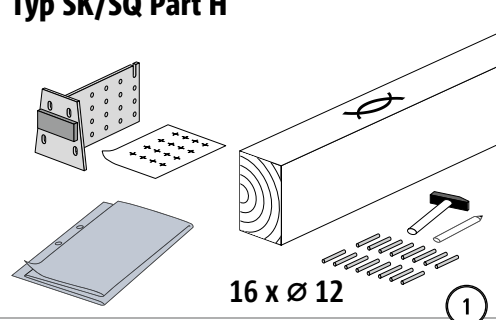
Schöck Isokorb® T Typ SQ mit Stahlschwert

T
Typ SQ

Holz – Stahlbeton

Einbauanleitung – Zimmerei

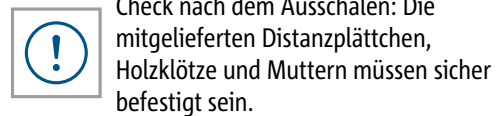
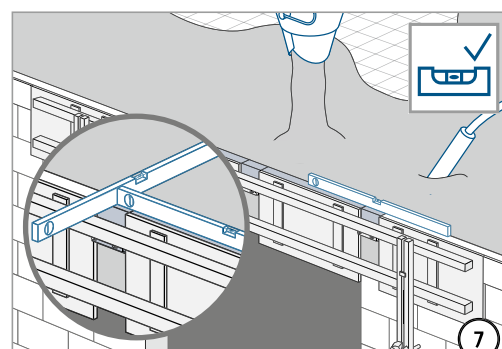
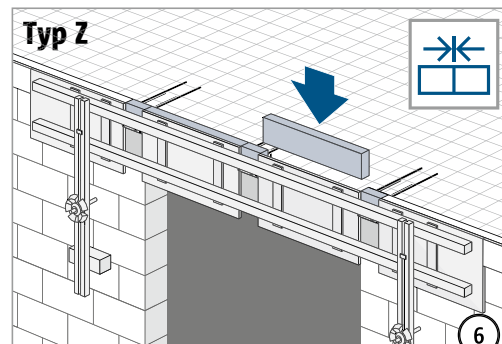
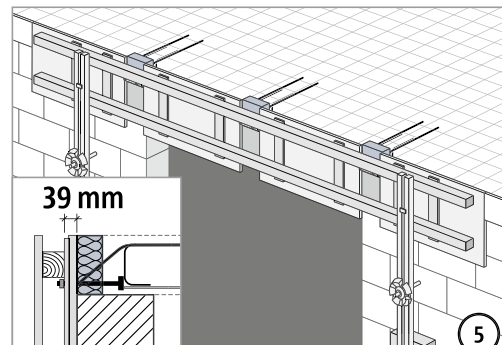
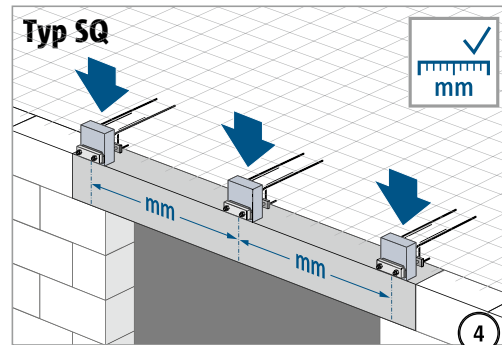
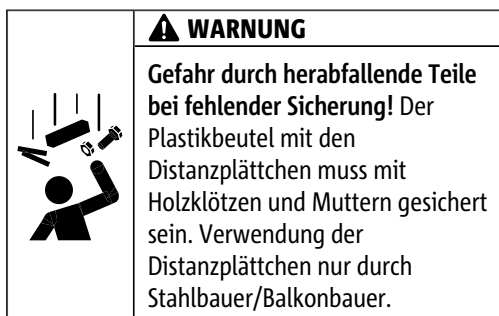
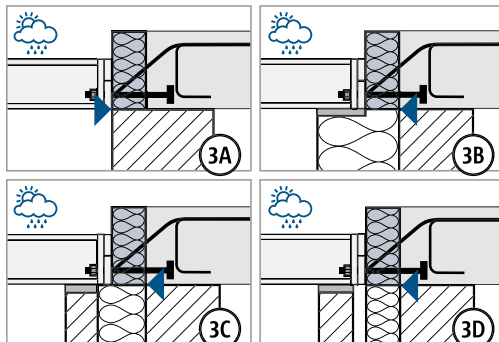
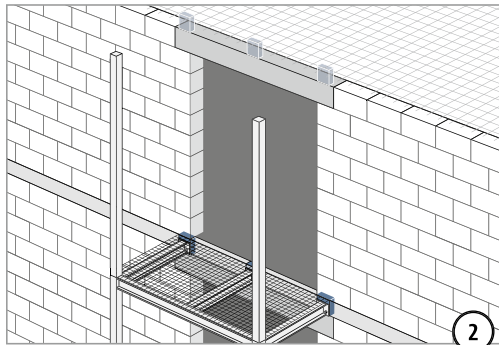
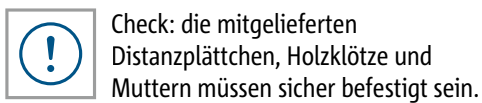
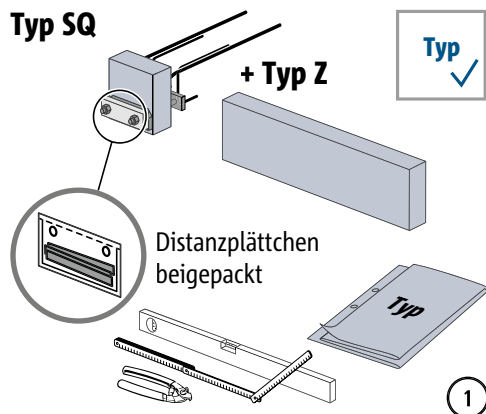
Typ SK/SQ Part H



T
Typ SQ

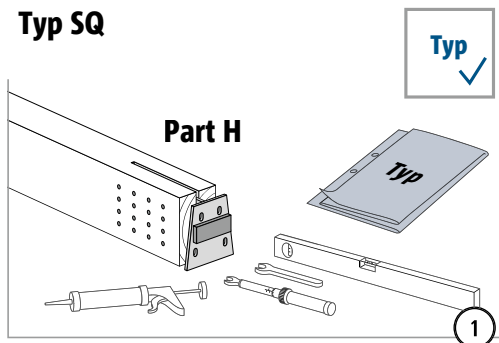
Holz – Stahlbeton

Einbauanleitung – Betonbau

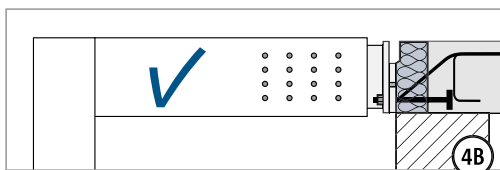
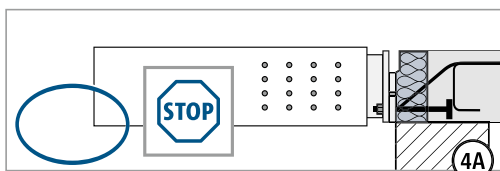
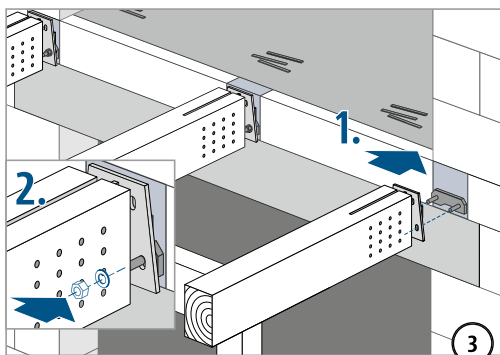
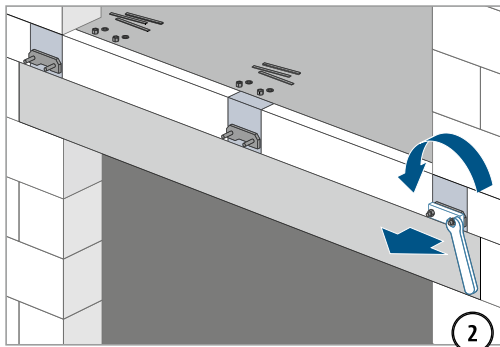


Einbauanleitung – gestützter Holzbalken

Typ SQ

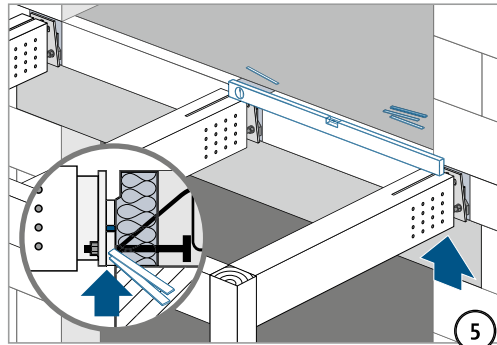


Vor dem Lösen der Muttern: Alle Gewinde auf Leichtgängigkeit prüfen. Falls erforderlich, zuerst säubern und schmieren!



⚠️ WARNUNG

Gefahr durch abstürzendes Bauteil bei fehlender Stützung!
Der Balkon muss immer statisch bemessen gestützt sein. Temporäre Stützen erst nach Einbau der endgültigen Stützung entfernen.



Typ	Gewinde (Druck)	Schlüsselweite
SQ-V1	M16	24 mm

