

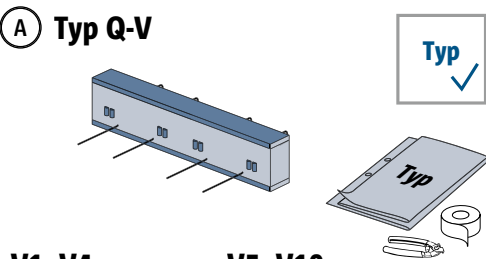
Schöck Isokorb® XT/T Typ Q

XT/T
Typ Q

Stahlbeton – Stahlbeton

Einbauanleitung

A Typ Q-V



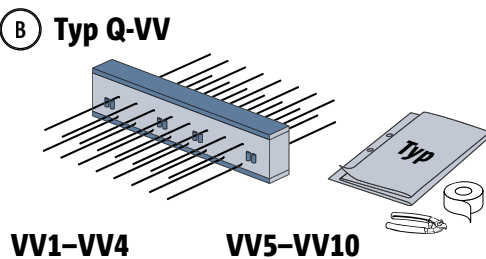
V1-V4



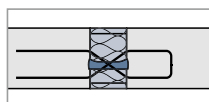
V5-V10



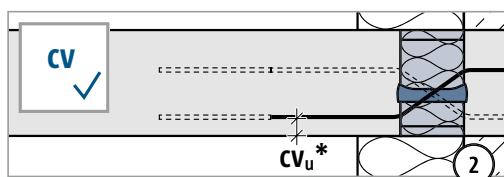
B Typ Q-VV



VV1-VV4



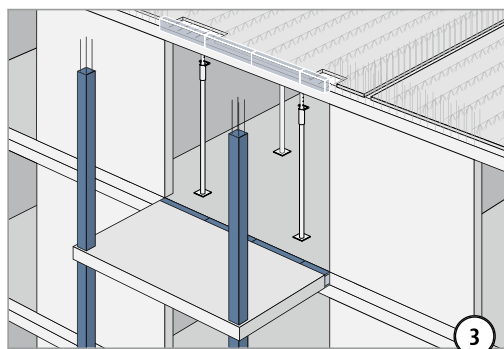
VV5-VV10



* CV30 / CV40 / CV50 / CV60

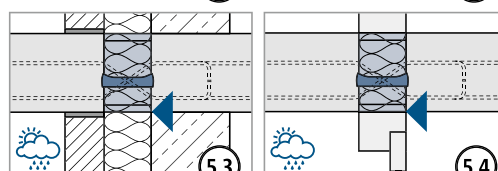
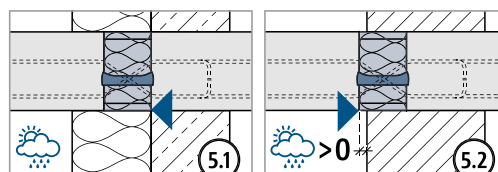
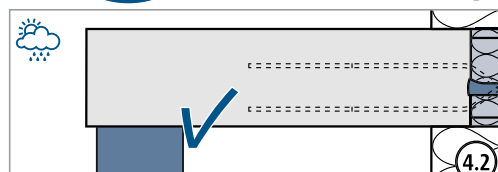
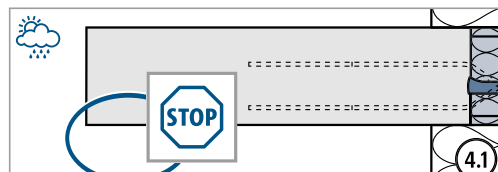


Betondeckung CV gemäß Vorgaben
des Tragwerksplaners bzw. der
Planungsunterlagen.

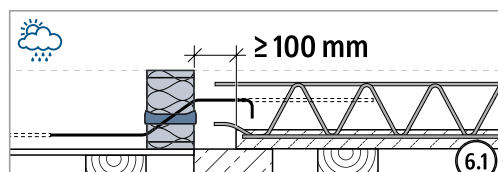


⚠️ WARNUNG

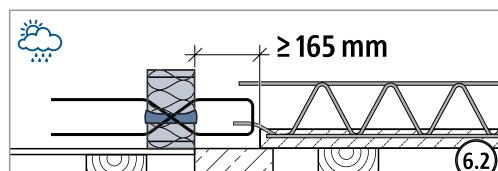
Gefahr durch abstürzendes Bauteil bei fehlender Stützung!
Der Balkon muss immer statisch bemessen gestützt sein.
Temporäre Stützen erst nach Einbau der endgültigen Stützung entfernen.



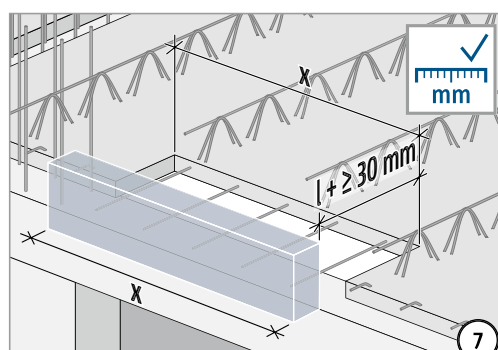
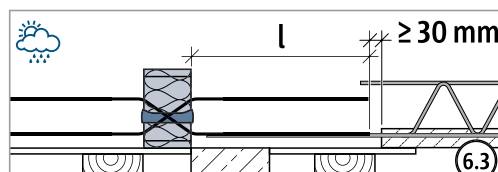
V1-V10



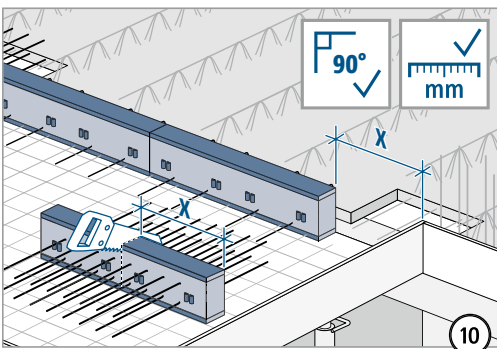
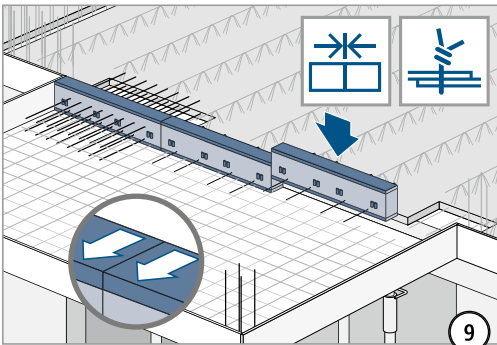
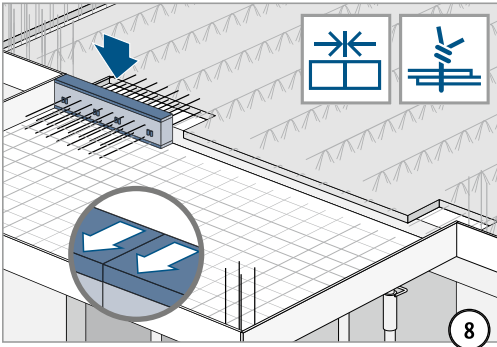
VV1-VV4



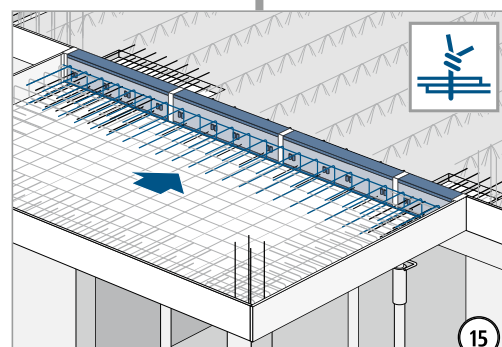
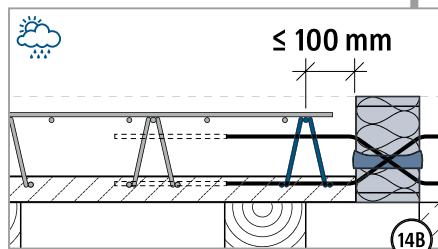
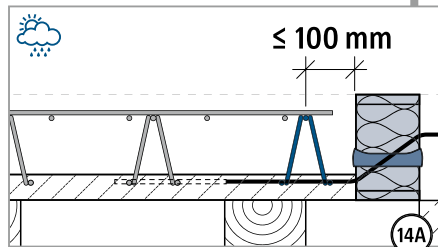
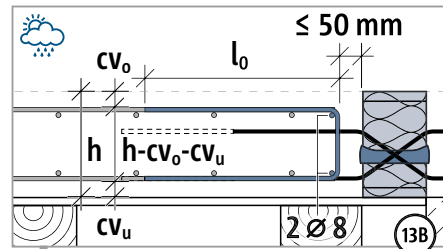
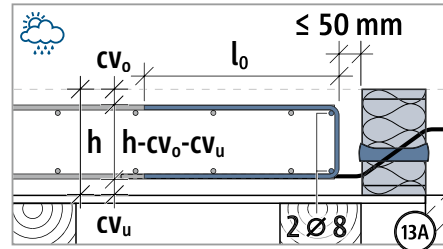
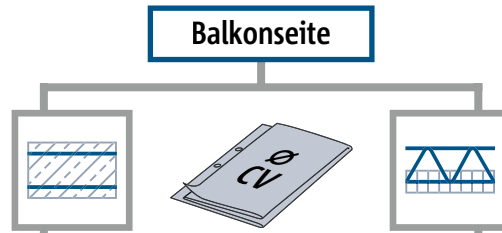
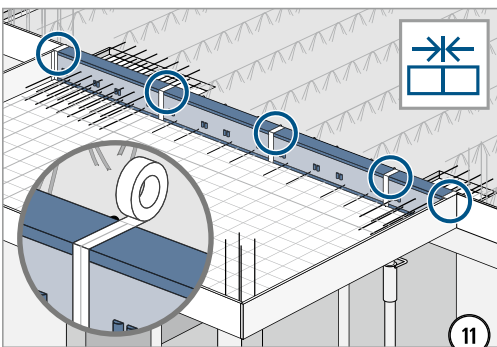
VV5-VV10



Einbauanleitung



Isokorb® XT/T Typ Q	Symmetrisch teilbar
V1–V10	500 mm
VV1–VV10	
V3, V5, V7, V9	250 mm
VV3, VV5, VV7, VV9	



Einbauanleitung

