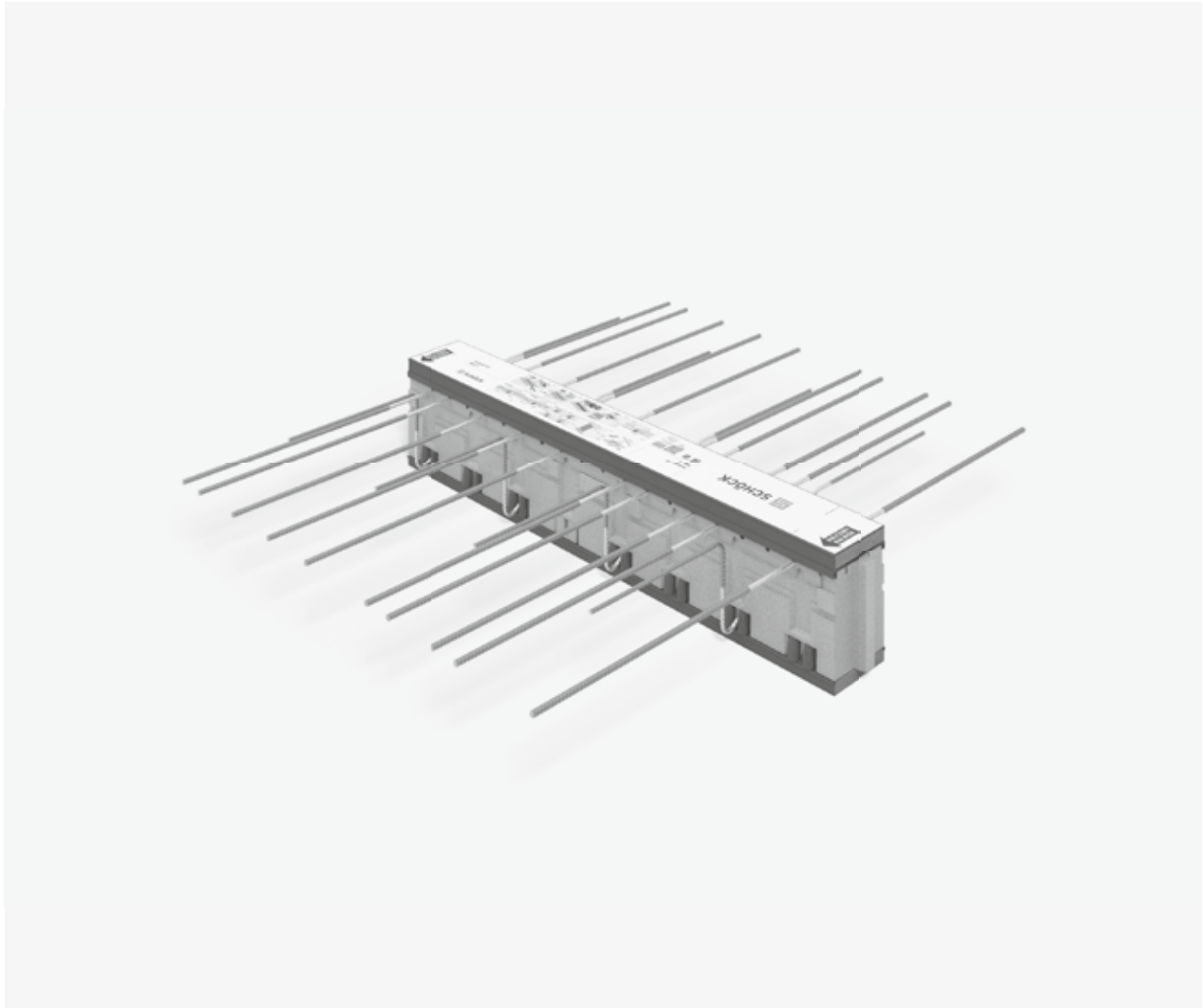


Schöck Isokorb® XT/T Typ K



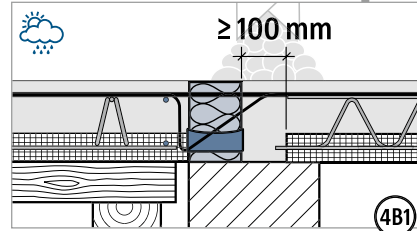
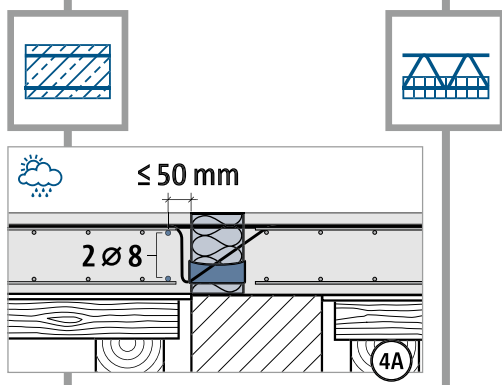
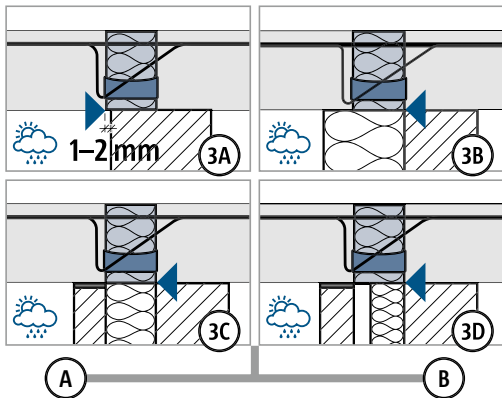
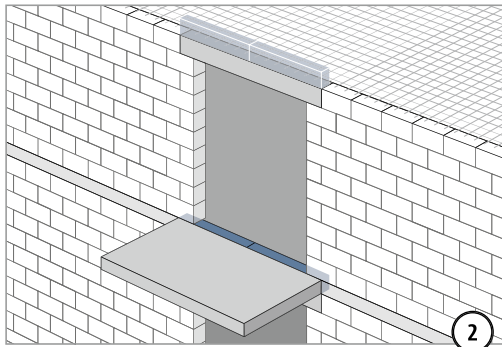
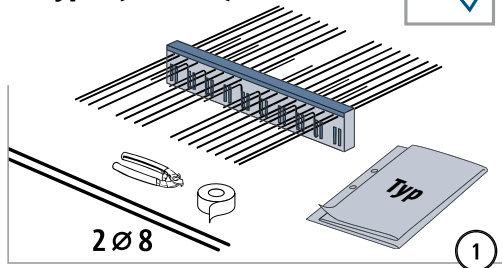
XT/T
Typ K

Stahlbeton – Stahlbeton

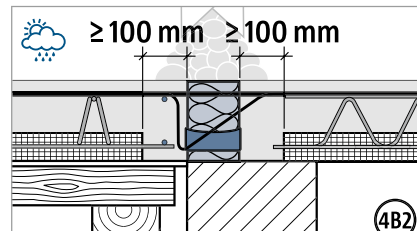
Einbauanleitung

XT Typ K (M1–M10)
T Typ K (M1–M11)

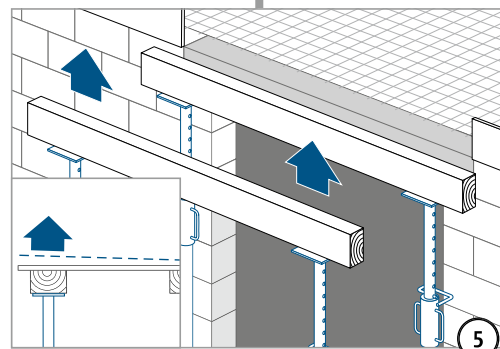
Typ ✓



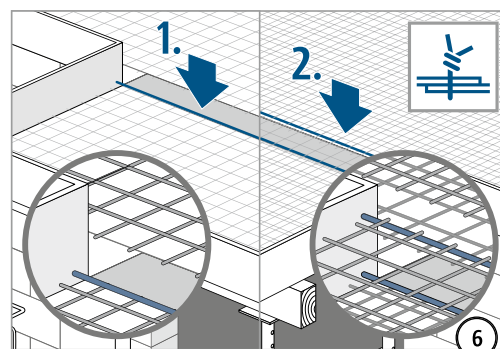
Druckfuge unbedingt mit Ort beton
verfüllen! Fugenbreite ≥ 100 mm.



Druckfuge unbedingt mit Ort beton
verfüllen! Fugenbreite ≥ 100 mm.



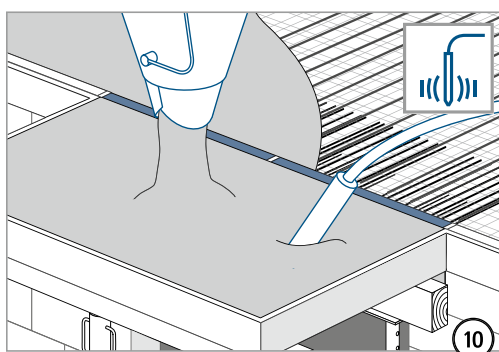
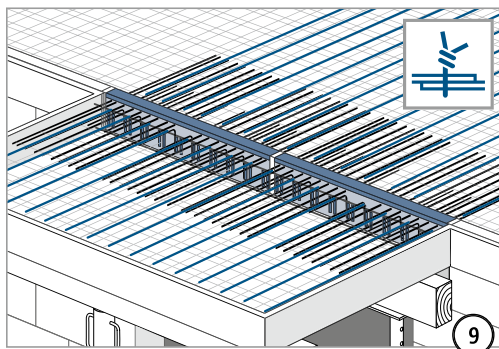
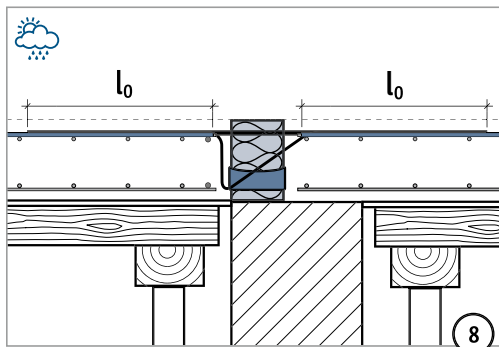
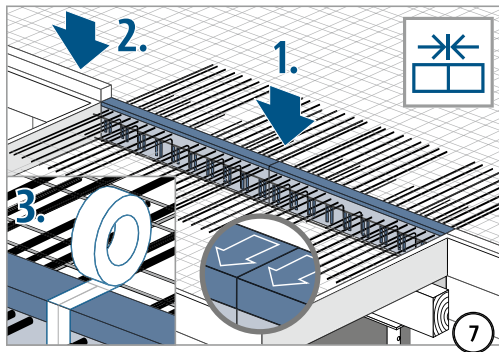
Schalung gemäß Werkplan überhöhen.



XT/T
Typ K

Stahlbeton – Stahlbeton

Einbauanleitung

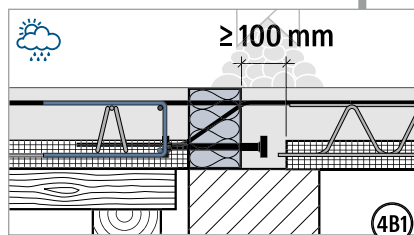
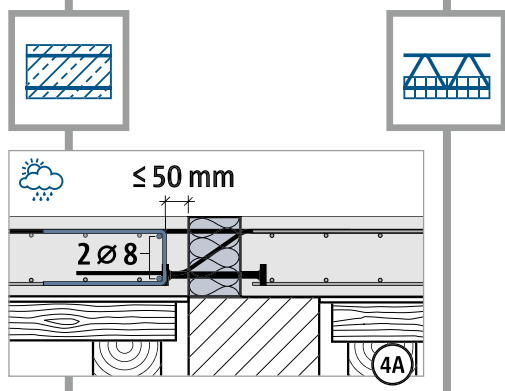
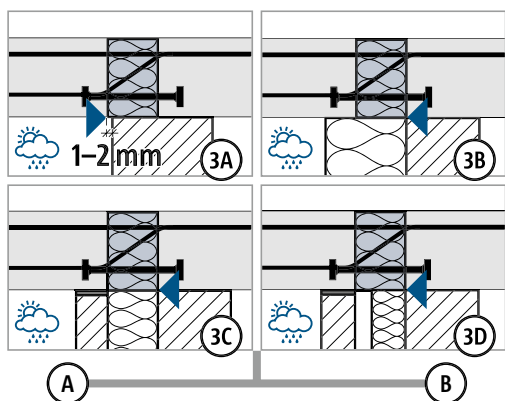
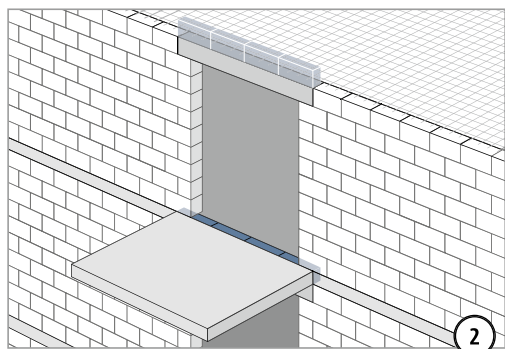
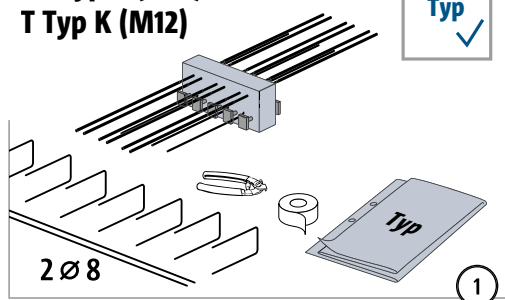
XT/T
Typ K

Stahlbeton – Stahlbeton

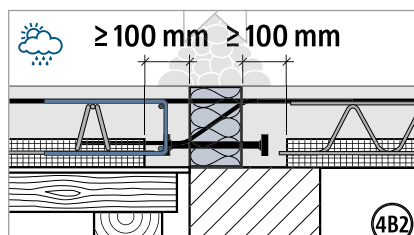
Einbauanleitung

XT Typ K (M11)
T Typ K (M12)

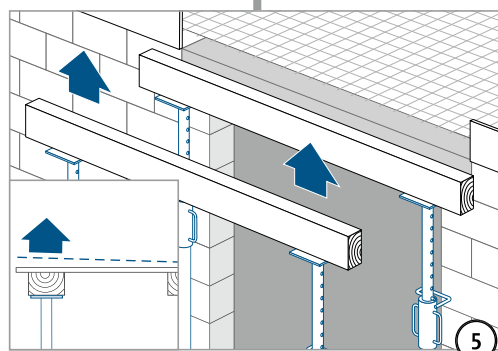
Typ ✓



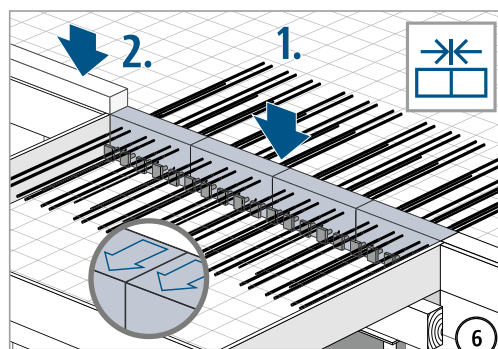
Druckfuge unbedingt mit Ort beton
verfüllen! Fugenbreite ≥ 100 mm.



Druckfuge unbedingt mit Ort beton
verfüllen! Fugenbreite ≥ 100 mm.



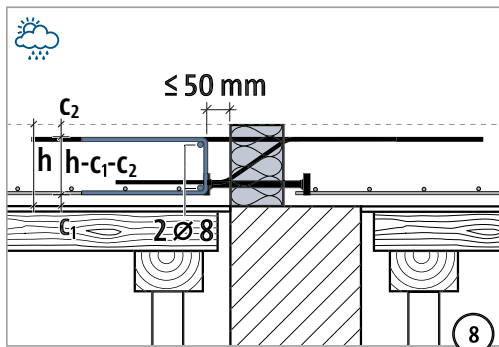
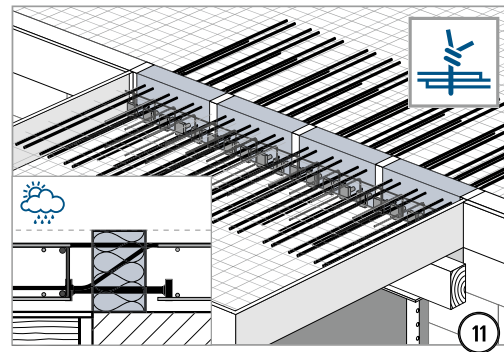
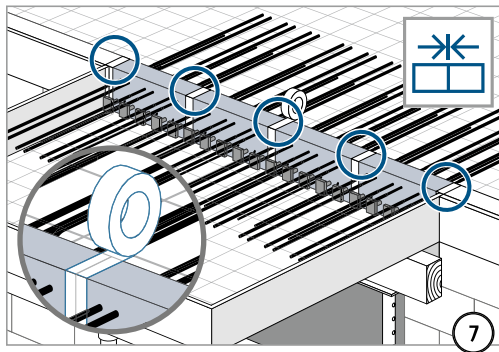
Schalung gemäß Werkplan überhöhen.



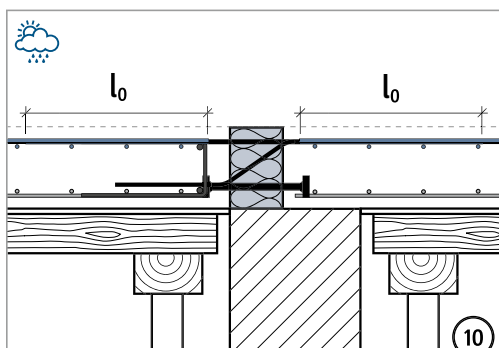
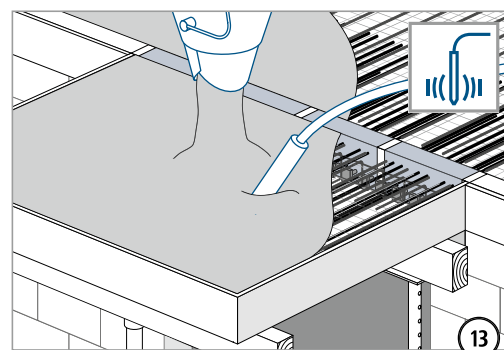
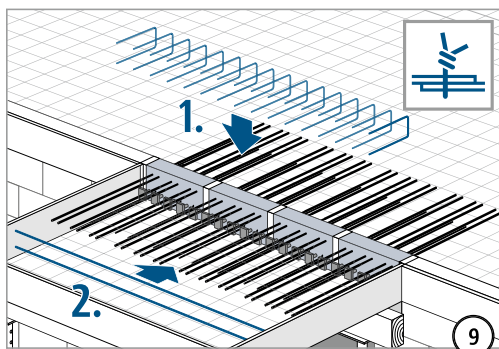
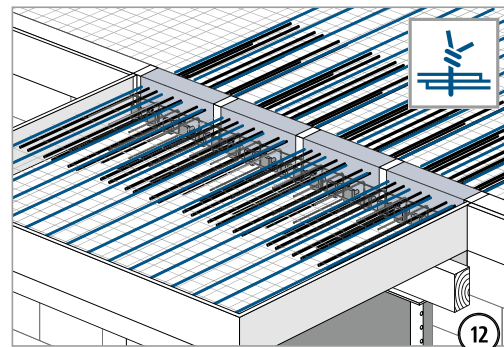
XT/T
Typ K

Stahlbeton – Stahlbeton

Einbauanleitung



Die balkonseitige Lage/Höhe der Querkraftstäbe variiert in Abhängigkeit zur Höhe und zur Tragstufe des Produkts.

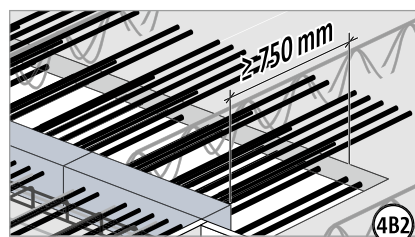
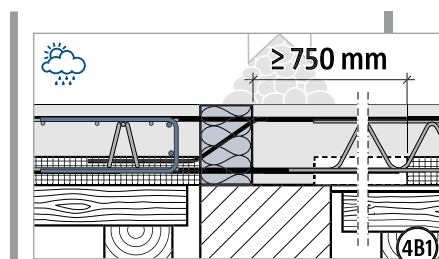
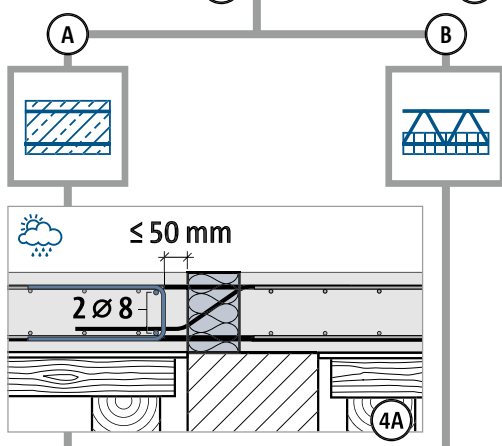
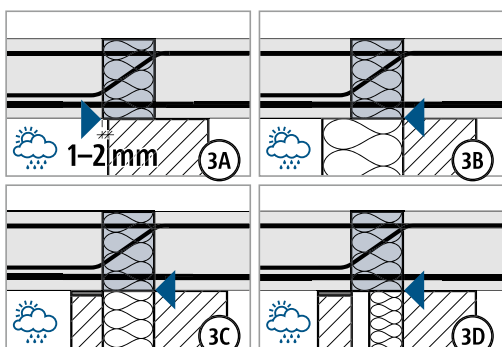
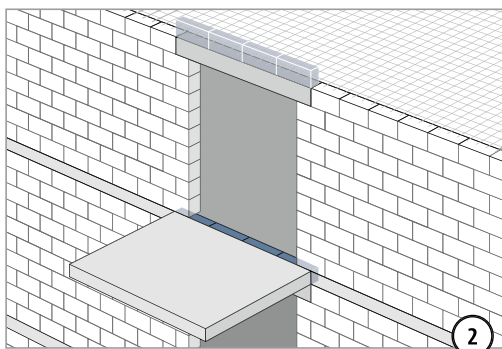
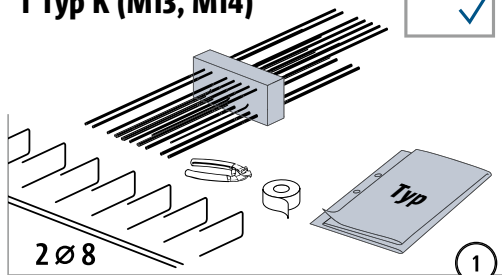
XT/T
Typ K

Stahlbeton – Stahlbeton

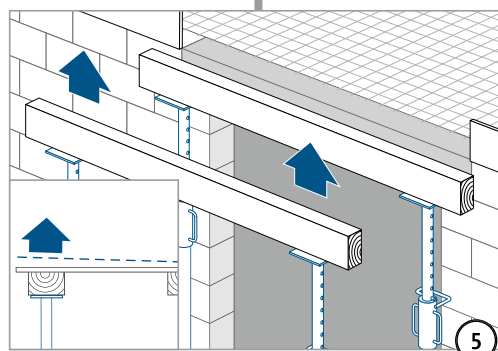
Einbauanleitung

XT Typ K (M12, M13)
T Typ K (M13, M14)

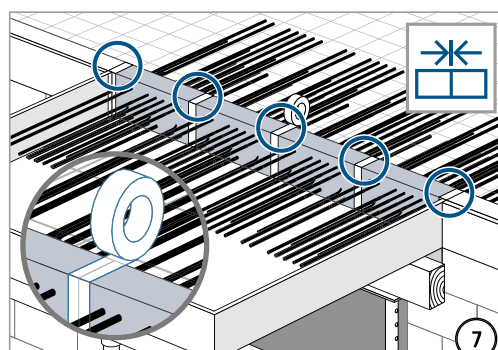
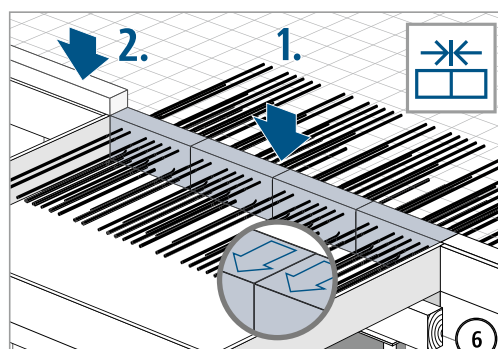
Typ ✓



Halbfertigteildecke im Bereich der Druckstäbe aussparen! Aussparung ≥ 750 mm.



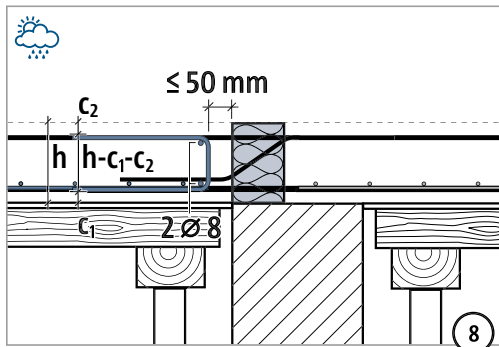
Schalung gemäß Werkplan überhöhen.



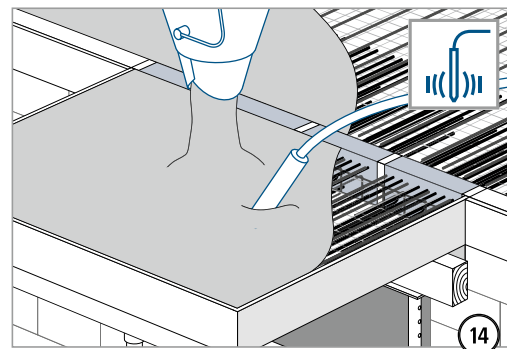
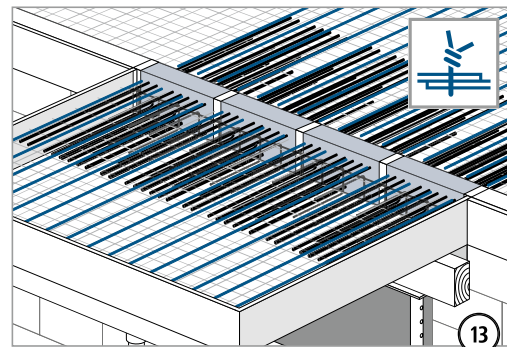
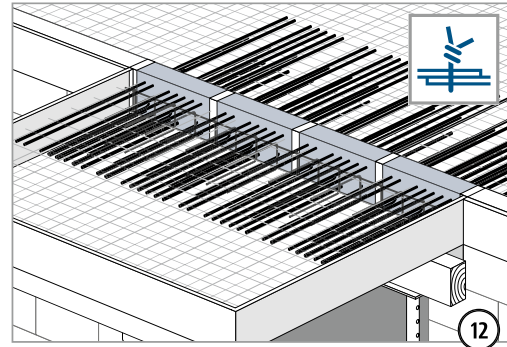
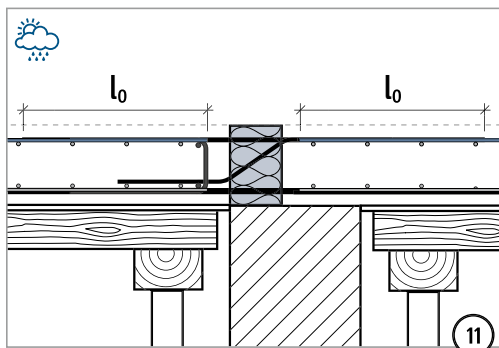
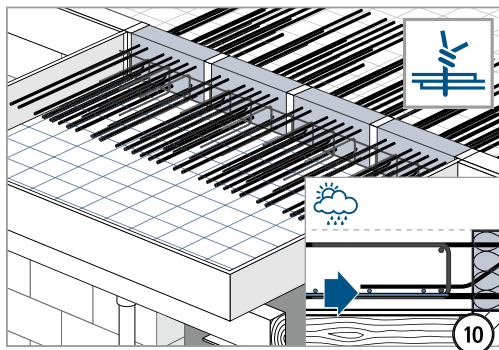
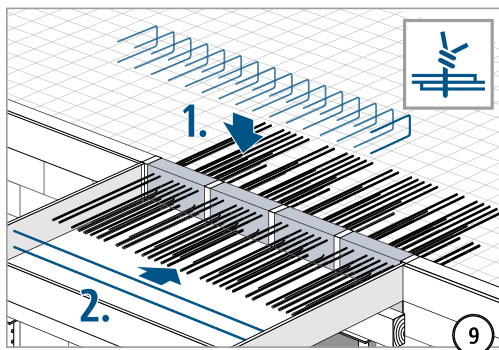
XT/T
Typ K

Stahlbeton – Stahlbeton

Einbauanleitung



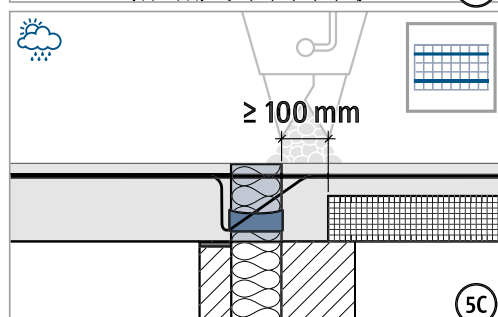
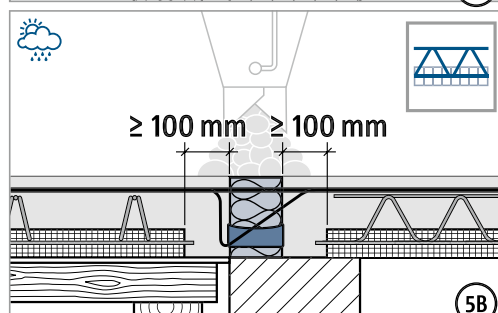
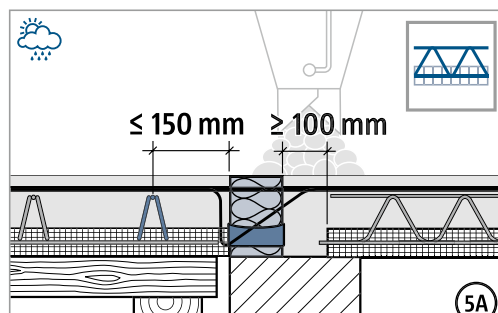
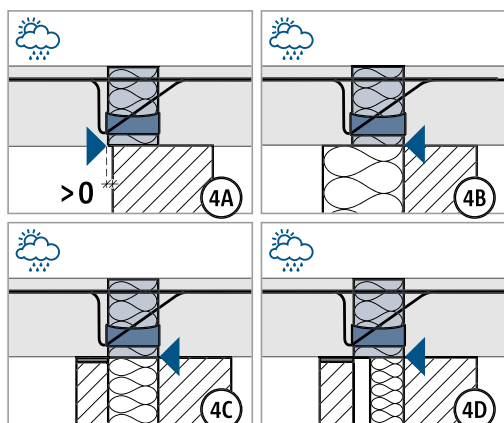
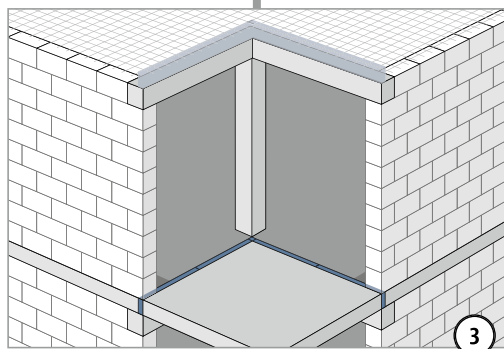
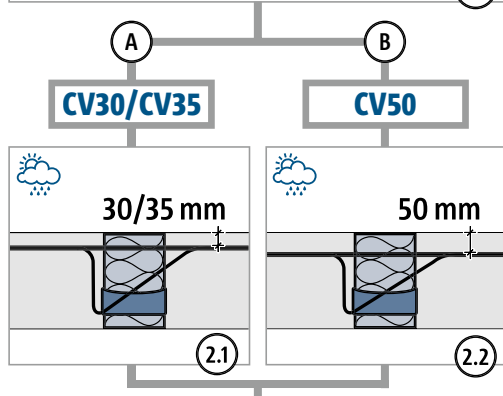
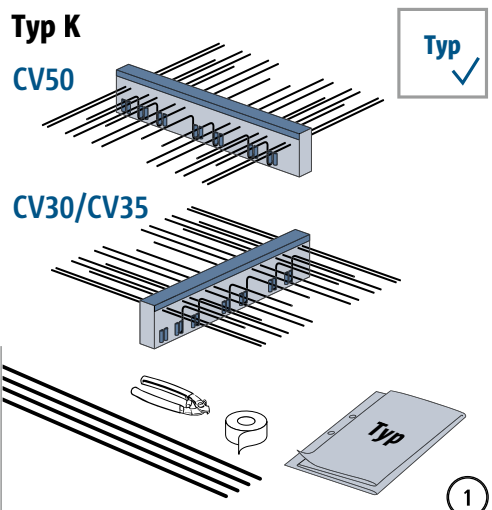
Die balkonseitige Lage/Höhe der Querkraftstäbe variiert in Abhängigkeit zur Höhe und zur Tragstufe des Produkts.



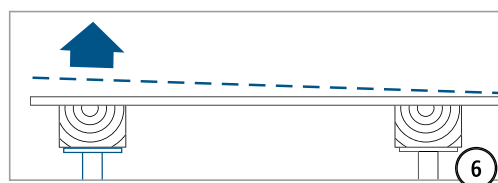
XT/T
Typ K

Stahlbeton – Stahlbeton

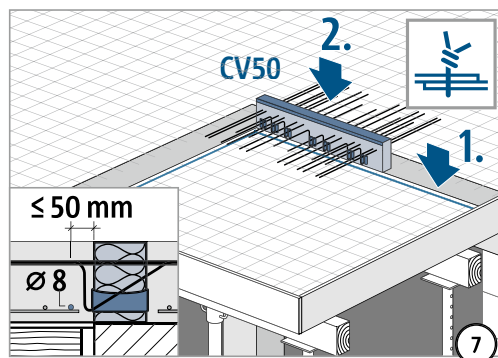
Einbauanleitung – Anschluss über Eck



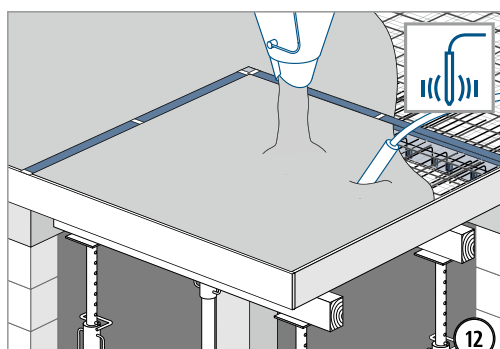
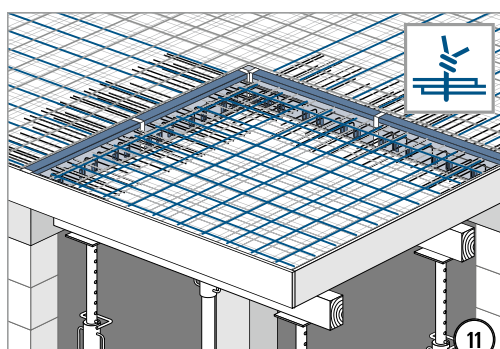
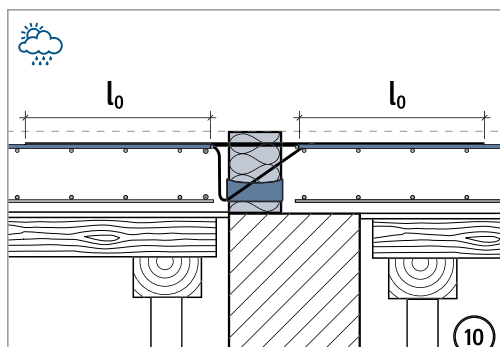
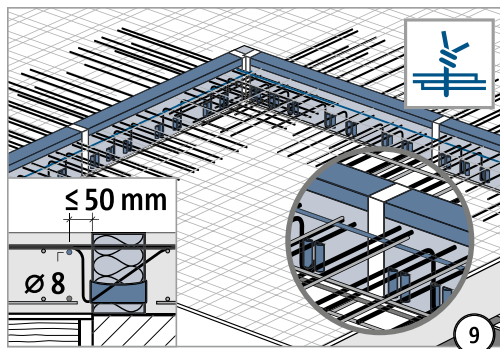
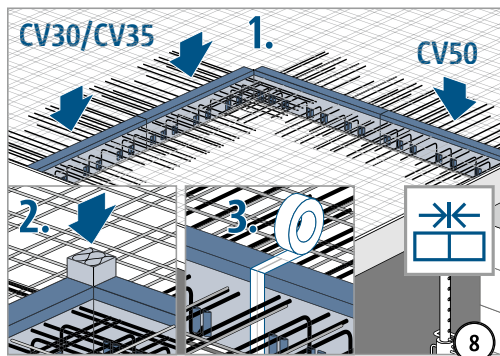
5A–5C: Druckfuge unbedingt mit Ort beton verfüllen! Fugenbreite ≥ 100 mm.



Schalung gemäß Werkplan überhöhen.



Einbauanleitung – Anschluss über Eck

XT/T
Typ K

Stahlbeton – Stahlbeton

