

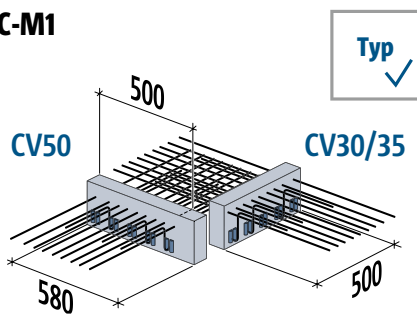
Schöck Isokorb® T Typ C

T
Typ C

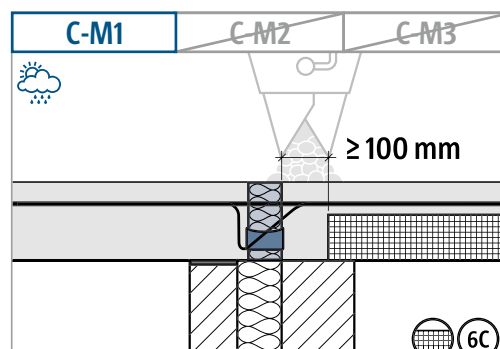
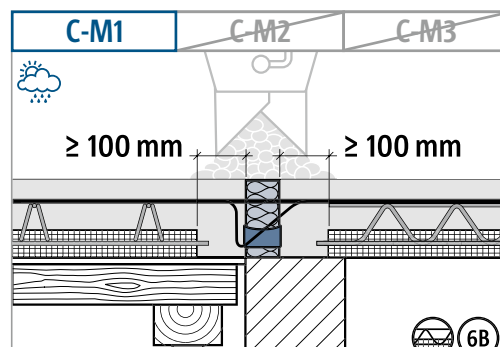
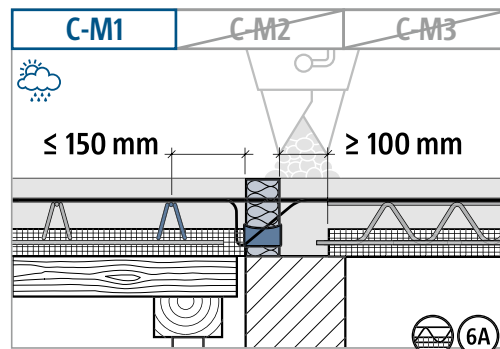
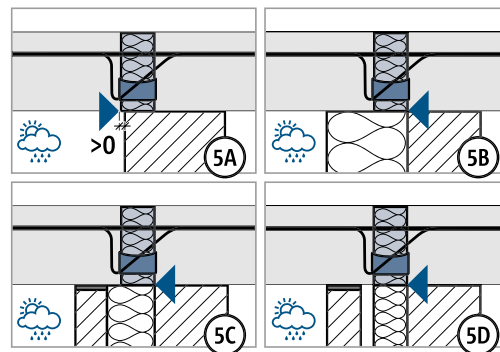
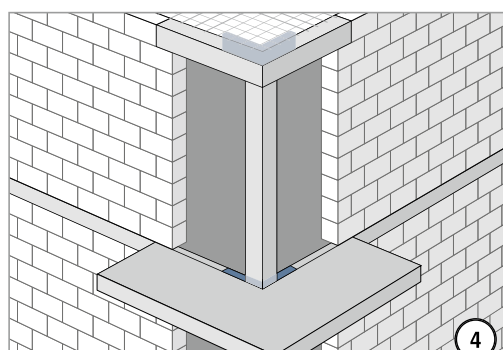
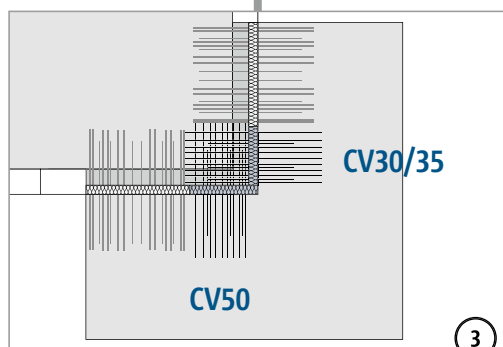
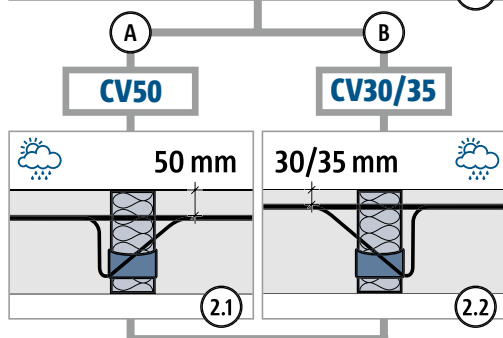
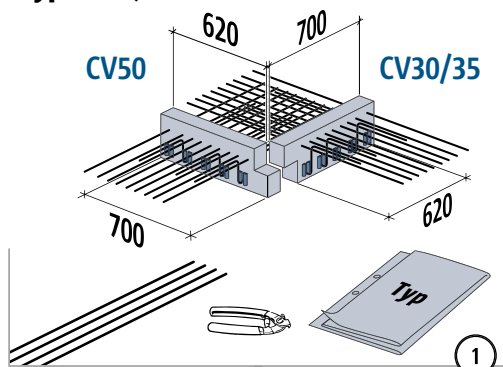
Stahlbeton – Stahlbeton

Einbauanleitung

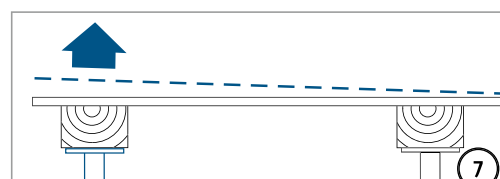
Typ C-M1



Typ C-M2, C-M3

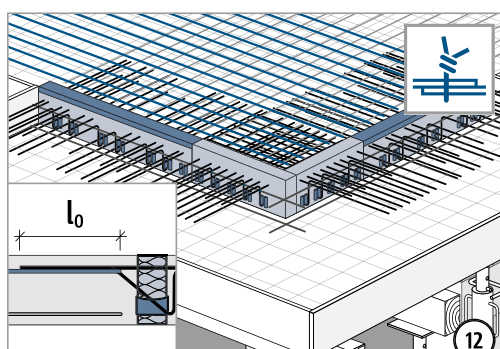
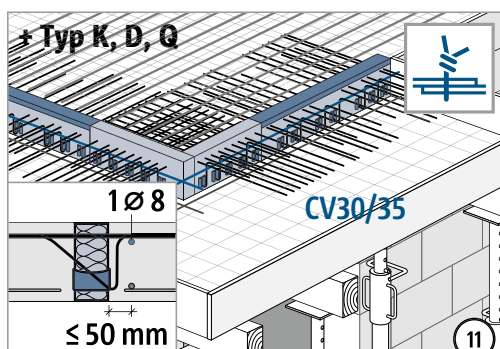
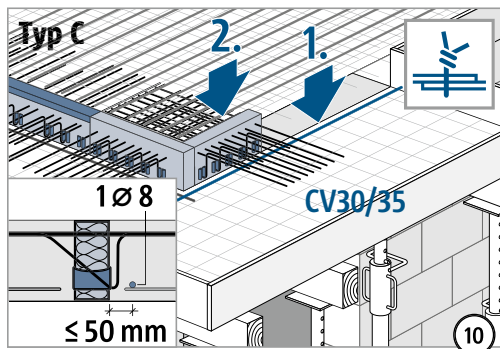
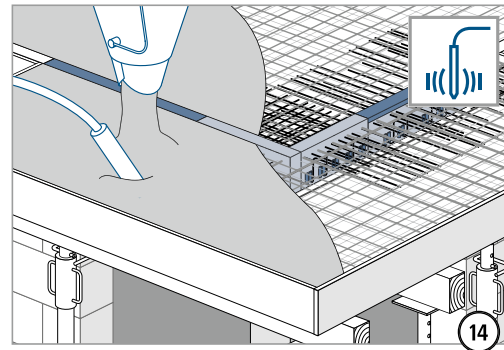
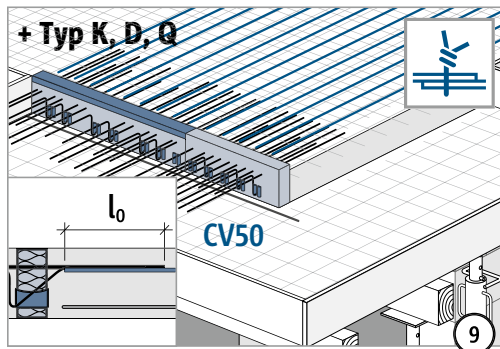
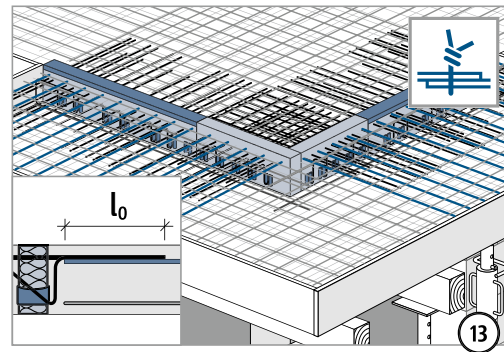
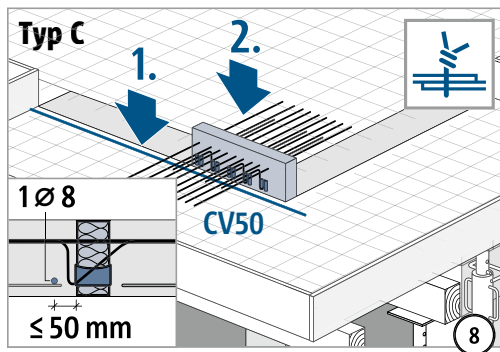


6A–6C: Druckfuge unbedingt mit Ort beton verfüllen! Fugenbreite ≥ 100 mm.



Schalung gemäß Werkplan überhöhen.

Einbauanleitung

T
Typ C

Stahlbeton – Stahlbeton

