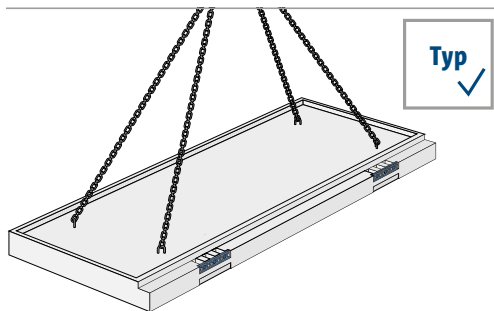
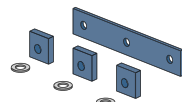


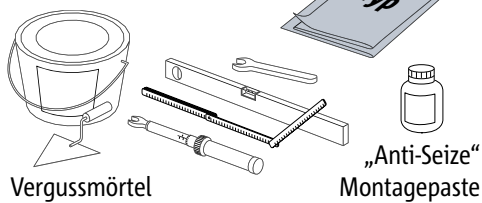
# Einbauanleitung – Fertigteil Baustelle



**Typ K-B Set CS**



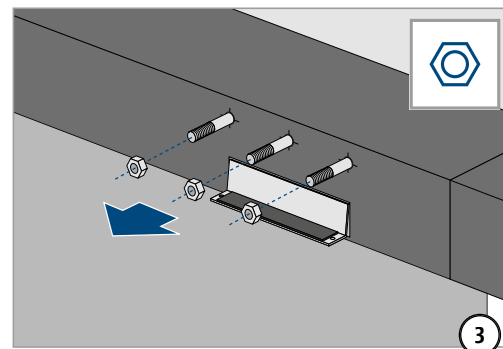
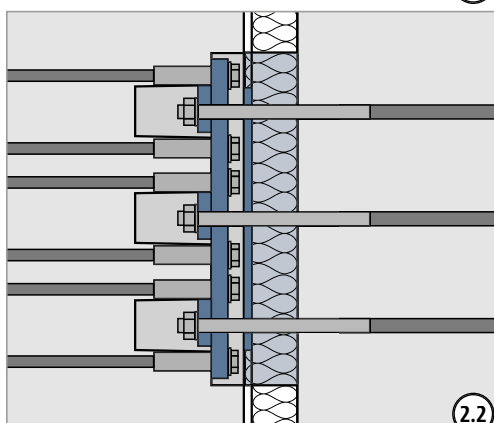
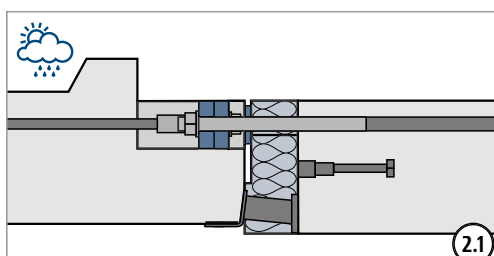
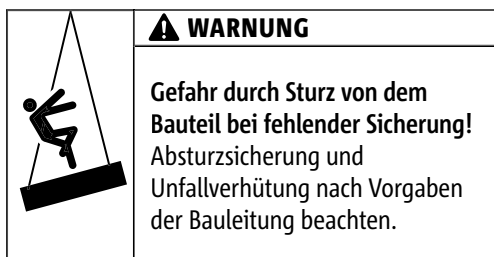
bauseits



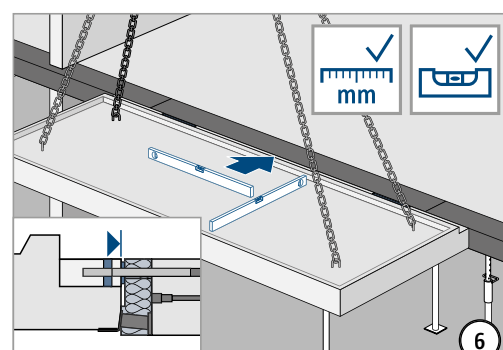
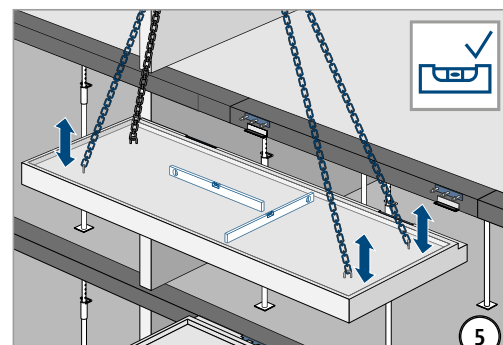
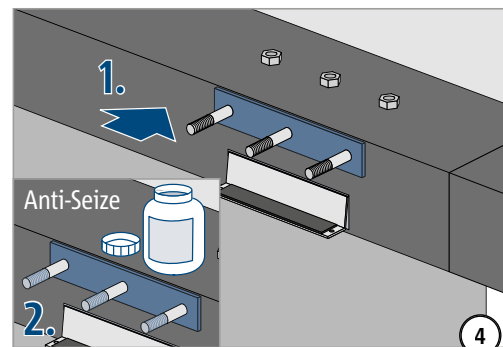
Vergussmörtel

„Anti-Seize“  
Montagepaste

1

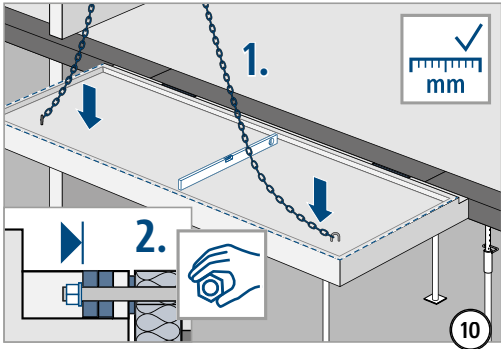
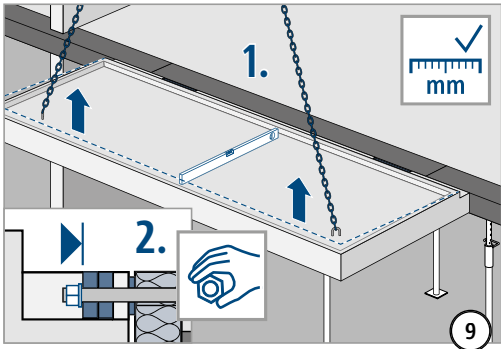
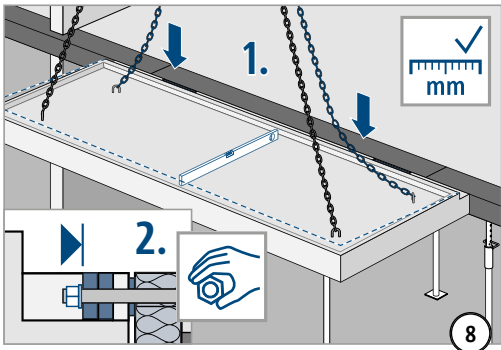
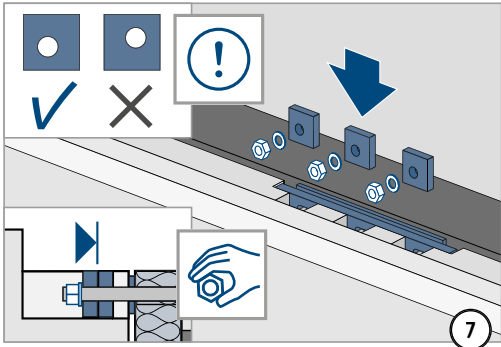



Vor dem Lösen der Muttern: Alle Gewinde auf Leichtgängigkeit prüfen. Falls erforderlich, zuerst säubern und schmieren!

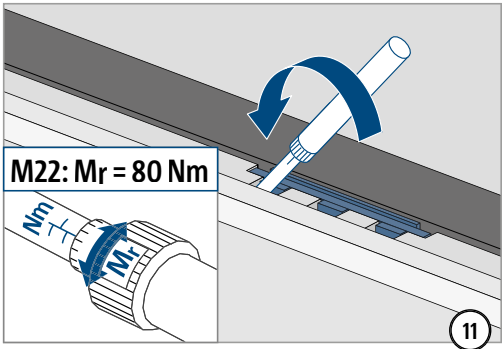


# Einbauanleitung – Fertigteil Baustelle

Stahlbeton/Stahlbeton



 Vor dem Festdrehen der Muttern mit dem Drehmomentschlüssel muss die korrekte Lage des Balkens gemäß der Planungsunterlagen überprüft werden.



Isokorb® IQ Typ	Gewinde (Zug/Druck)	Schlüsselweite
K-B	M22	32 mm

