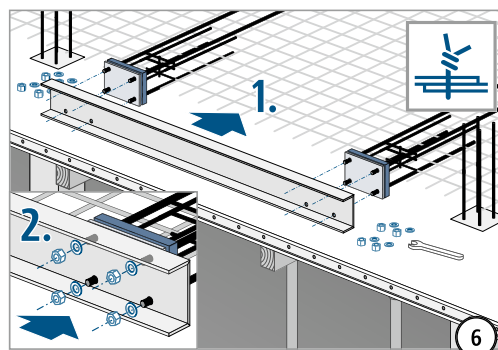
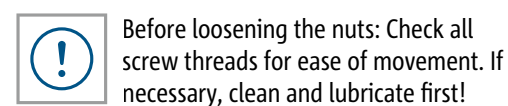
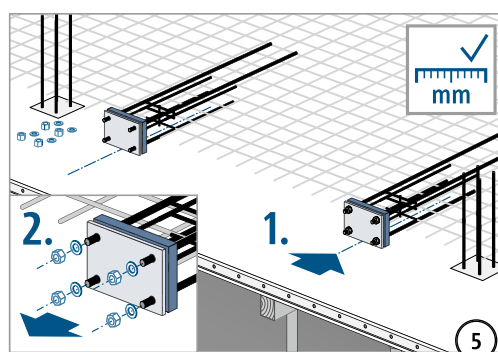
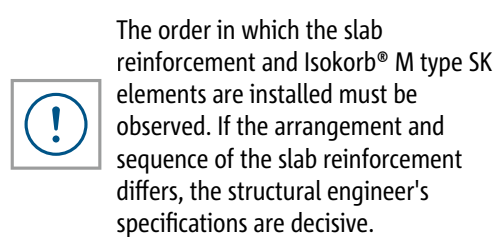
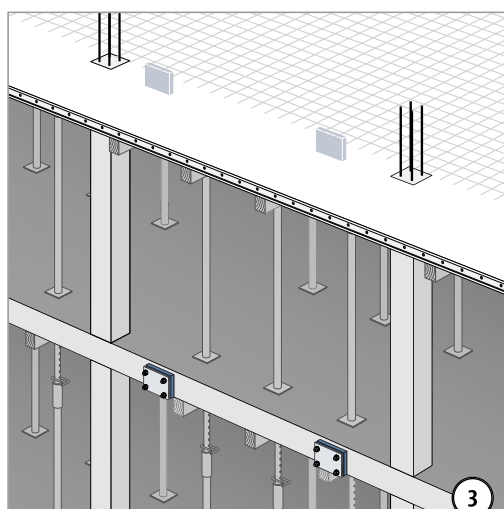
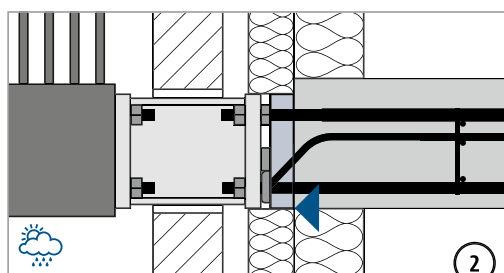
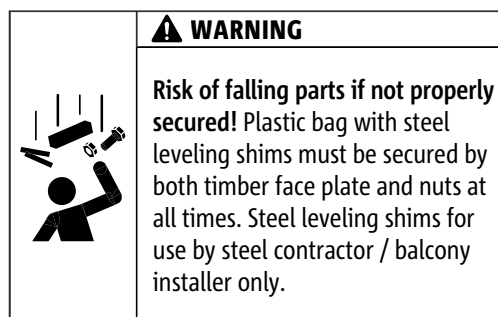
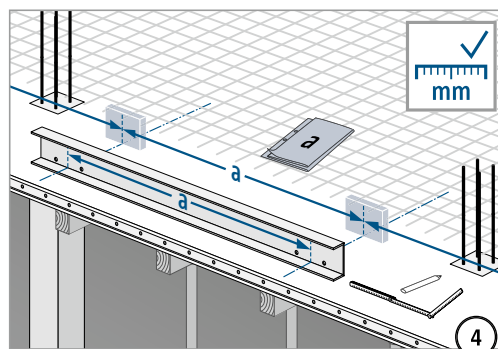
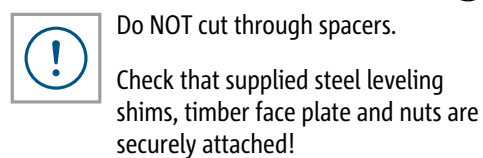
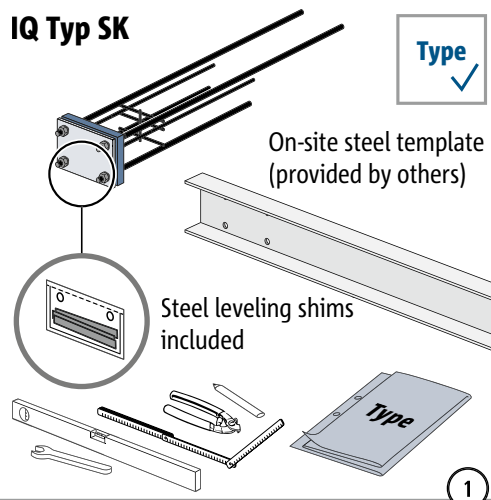


Schöck Isokorb® IQ type SK

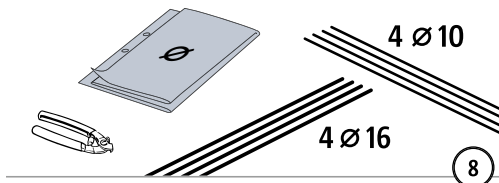
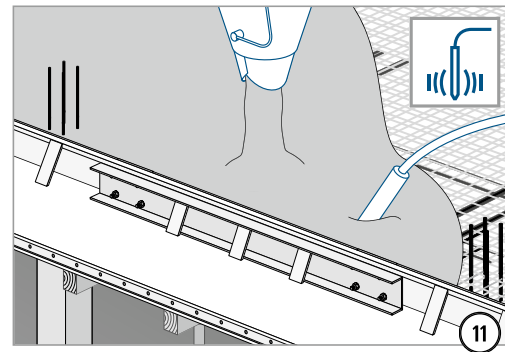
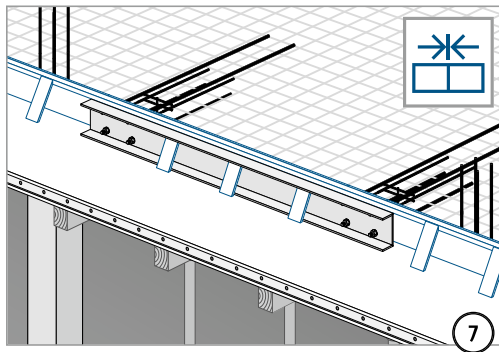
IQ
type SK

Steel – reinforced concrete

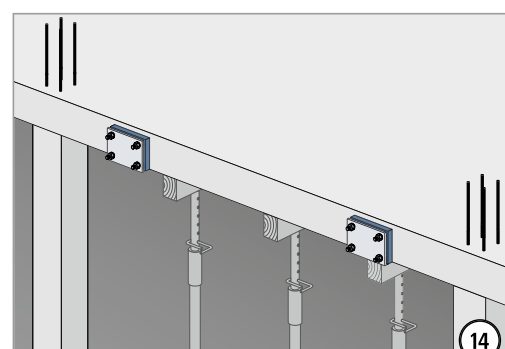
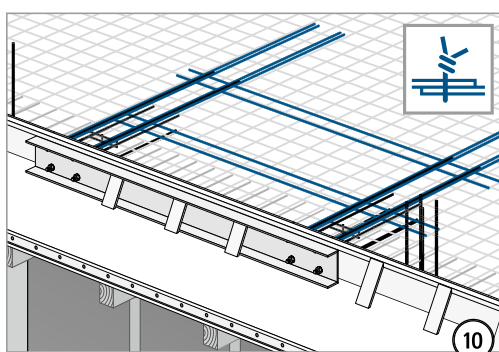
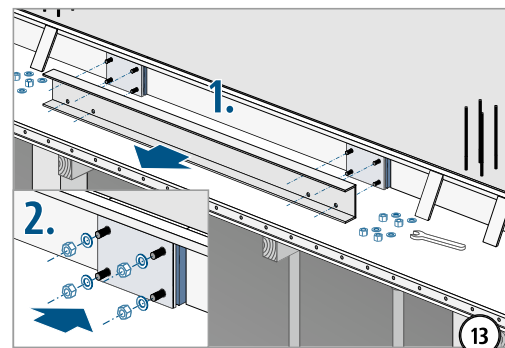
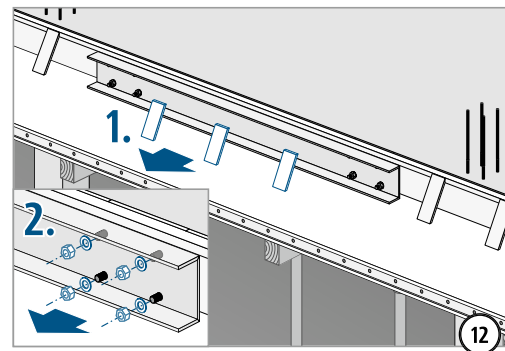
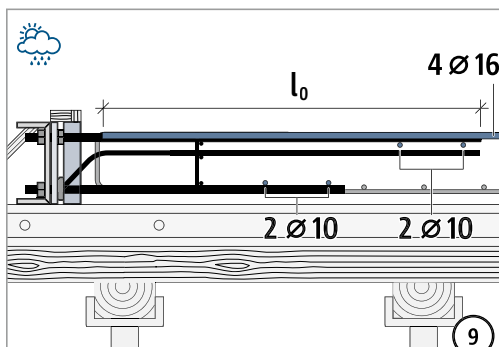
Installation instructions – concrete construction



Installation instructions – concrete construction



If arrangement and order of slab reinforcement differs, the specs given by structural engineer are decisive. Additional reinforcement requirement (provided by others).



After steel template and formwork stripped - check that supplied steels shims, timber face plate and nuts are securely reattached!

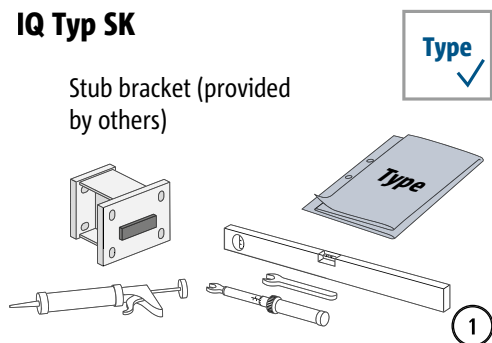
IQ
type SK

Steel – reinforced concrete

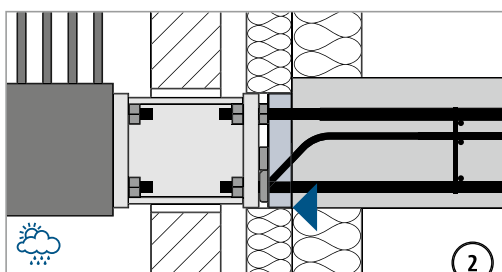
Installation instructions – stub brackets

IQ Typ SK

Stub bracket (provided by others)

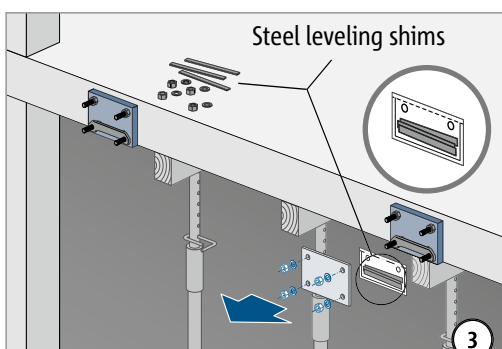


Before the endplates are manufactured, the bolt axes of the Isokorb® set in concrete should be measured on site.

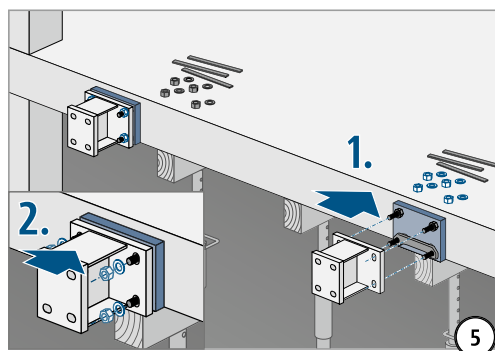
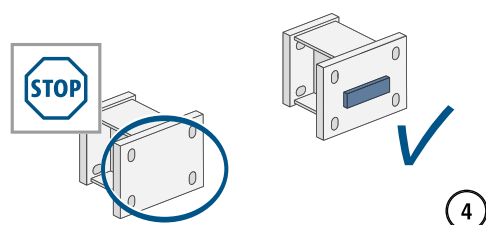


⚠ WARNING

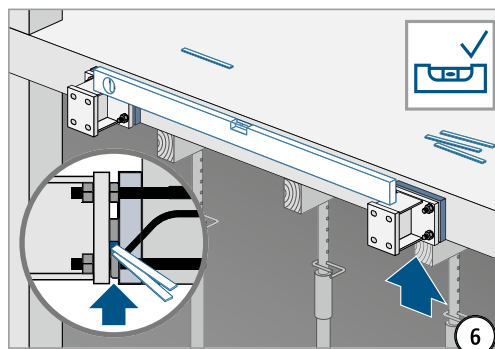
Risk of falling parts if not properly secured! Steel leveling shims, timber face plate and nuts must be secured before and during the installation.



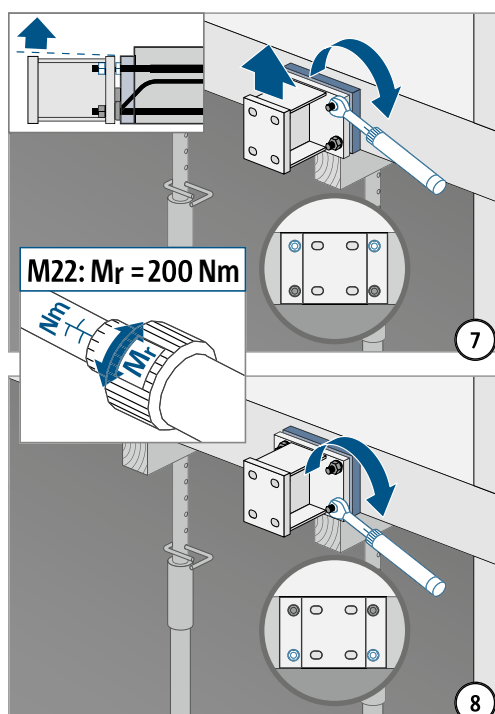
Before loosening the nuts: Check all screw threads for ease of movement. If necessary, clean and lubricate first!



Check before balcony connection: The supplied steel leveling shims are absolutely necessary for the force-fit height compensation from the on-site butt-stop to the steel plate of the Isokorb®.



Isokorb® IQ Type	Screw thread (tension/compression)	Wrench size
SK-MM2-VV2	M22	32 mm



Installation instructions – stub brackets

