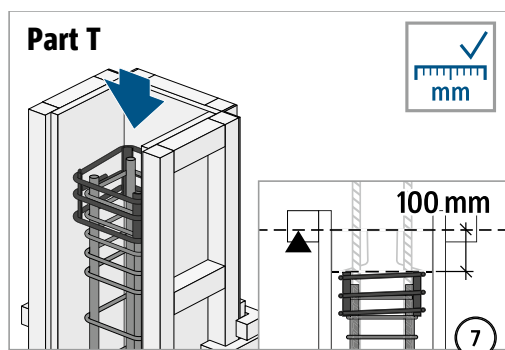
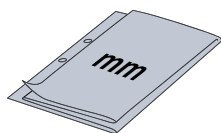
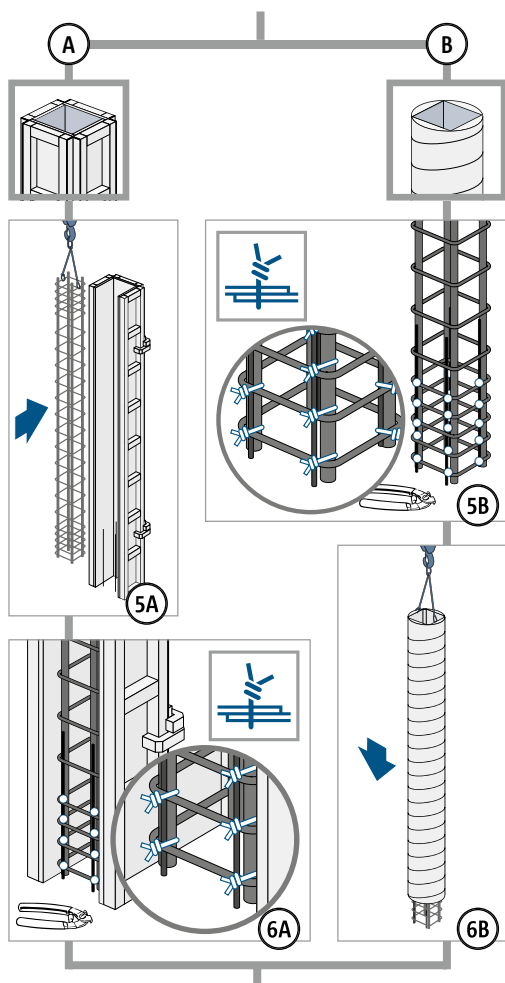


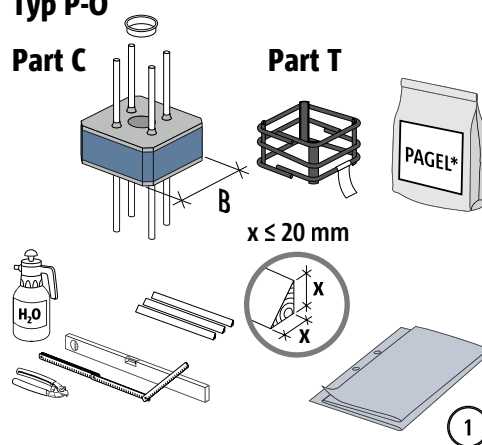
Einbauanleitung – Stützenkopf Ort beton



Typ P-O

Part C

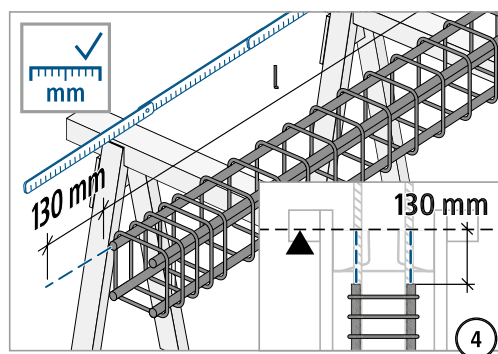
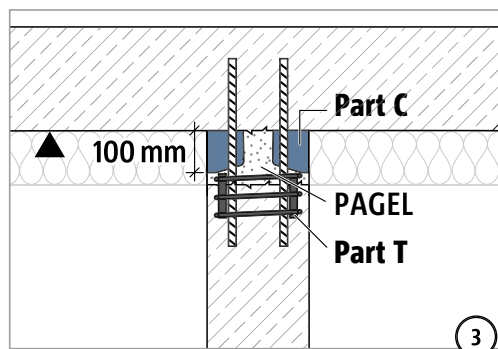
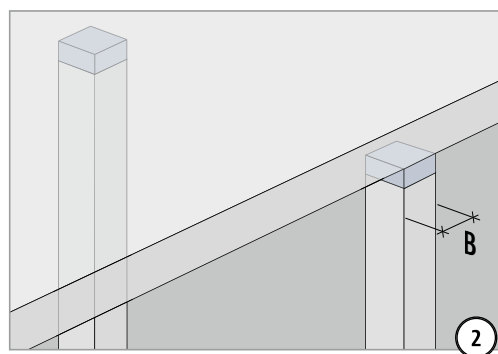
Part T



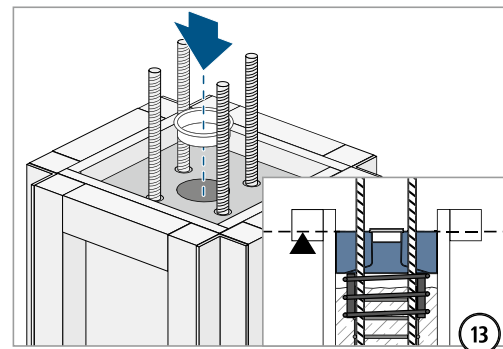
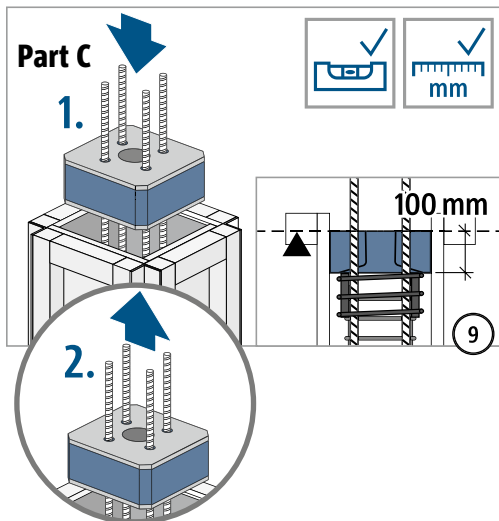
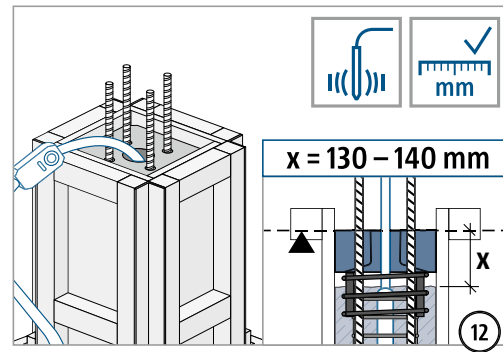
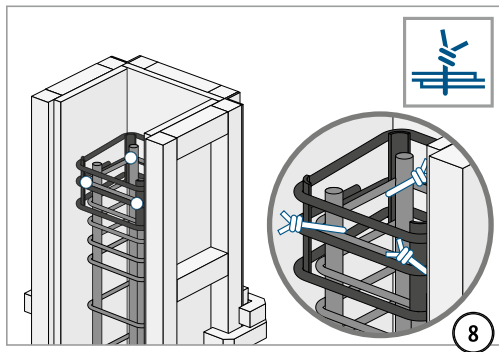
*DE: V1/50 PAGEL-Verguss



Montageprotokoll verwenden.

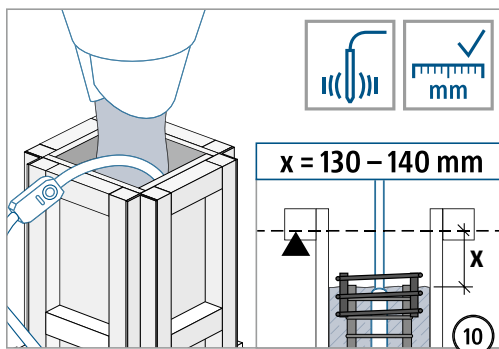


Einbauanleitung – Stützenkopf Ortbeton

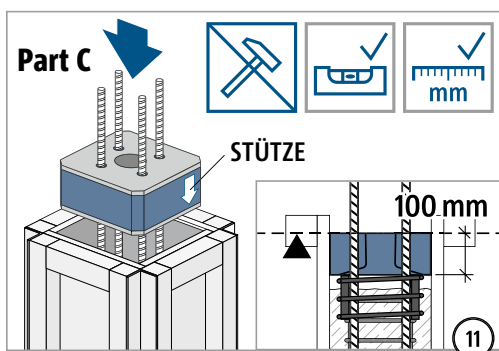
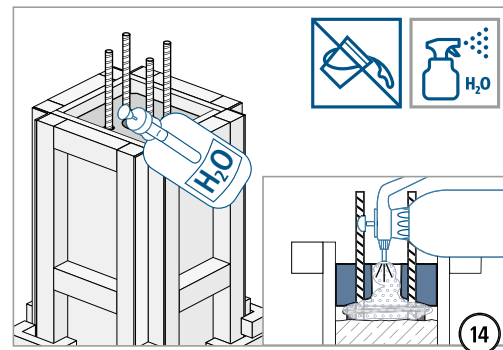


 bei 20 °C
min. 24 h

Temperatur (C°)	Wartezeit (h)
≥ 20	24
15	30
10	40
5	50



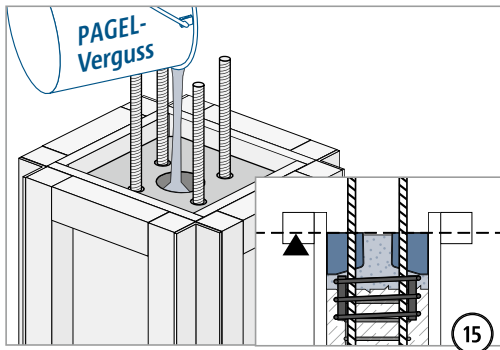
 max. 5 Min.



Typ P

Tragwerksplanung

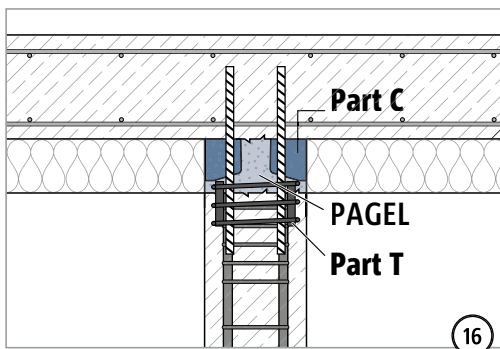
Einbauanleitung – Stützenkopf Ortbeton



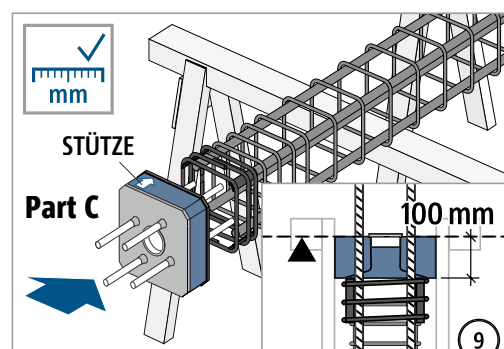
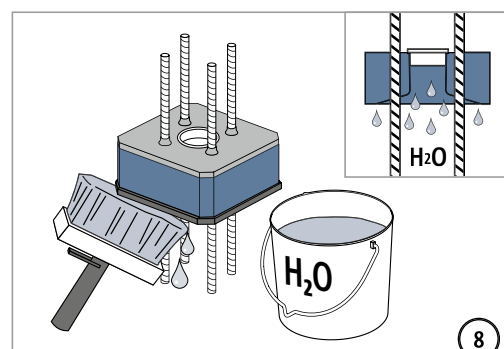
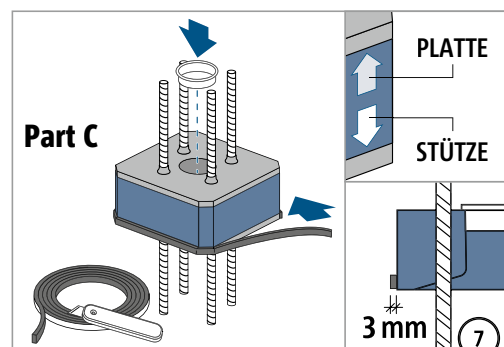
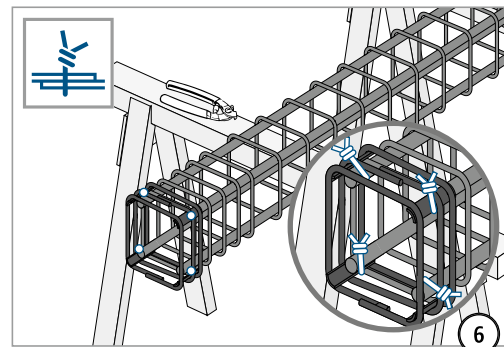
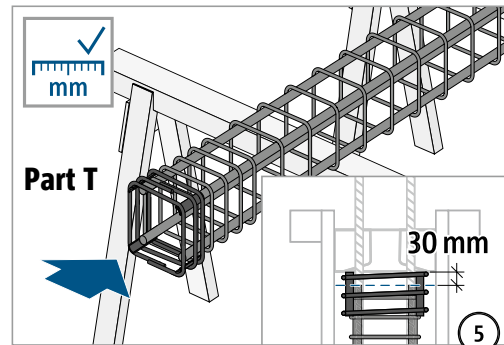
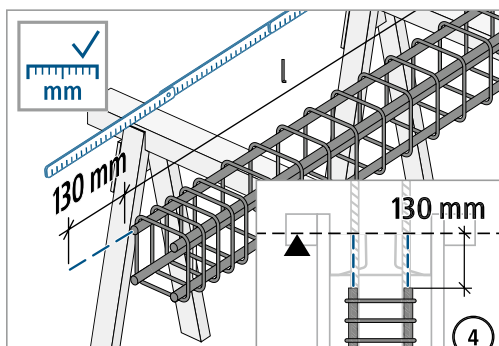
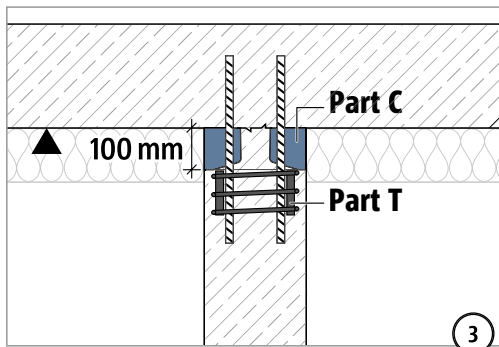
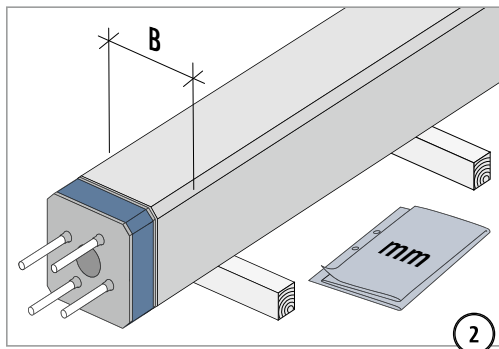
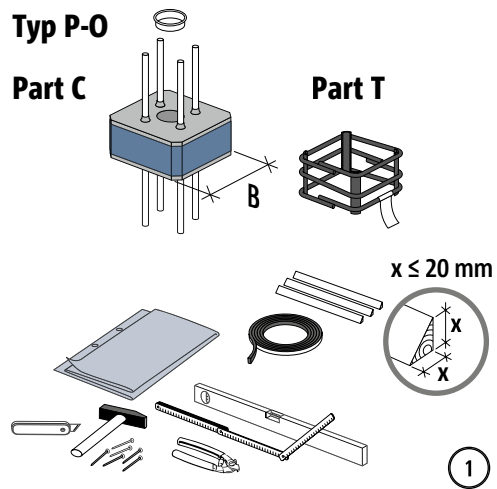
B250: Verguss mit ca. 3 Liter PAGEL V1/50
B300: Verguss mit ca. 4 Liter PAGEL V1/50
B350: Verguss mit ca. 5,5 Liter PAGEL V1/50
B400: Verguss mit ca. 7 Liter PAGEL V1/50



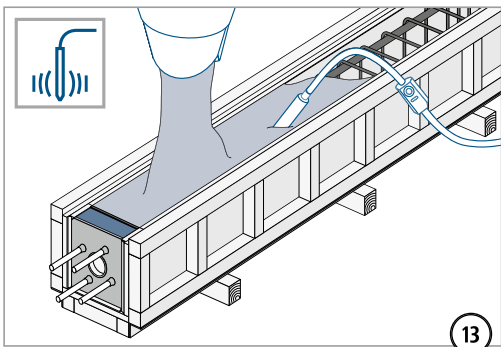
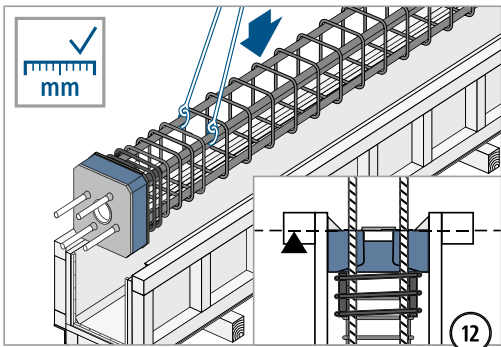
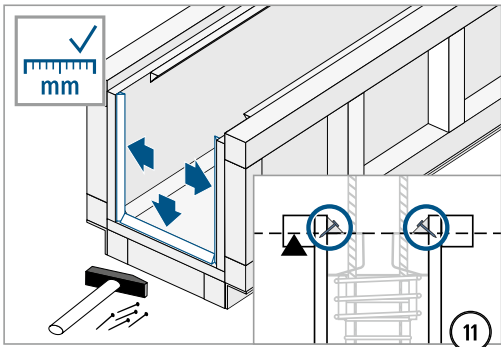
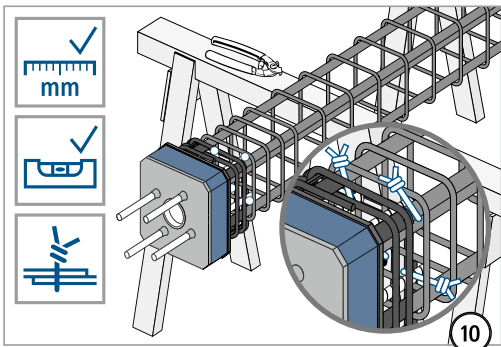
bei 20 °C
min. 24 h



Einbauanleitung – Stützenkopf Fertigteil



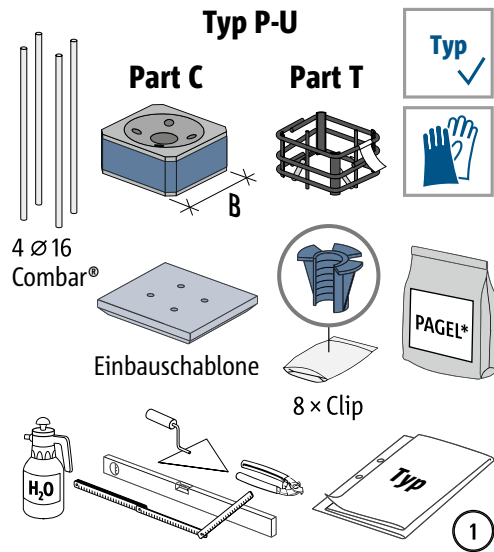
Einbauanleitung – Stützenkopf Fertigteil



bei 20 °C
min. 24 h

Temperatur (C°)	Wartezeit (h)
≥ 20	24
15	30
10	40
5	50

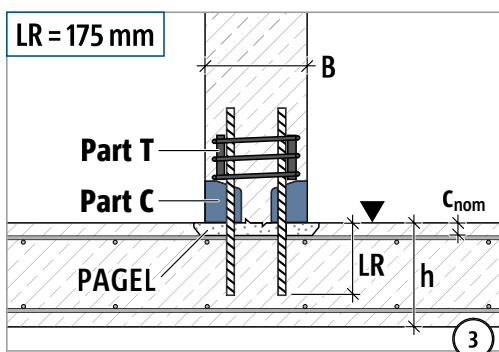
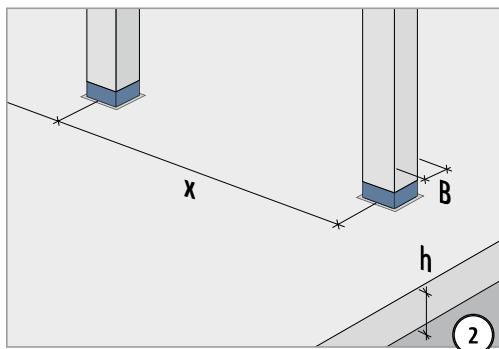
Einbauanleitung – Stützenfuß Ortbeton



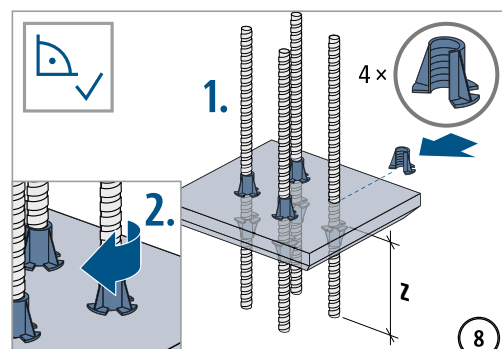
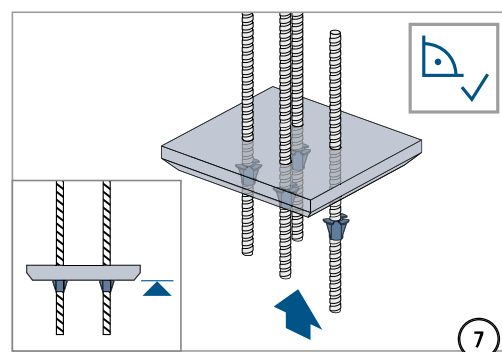
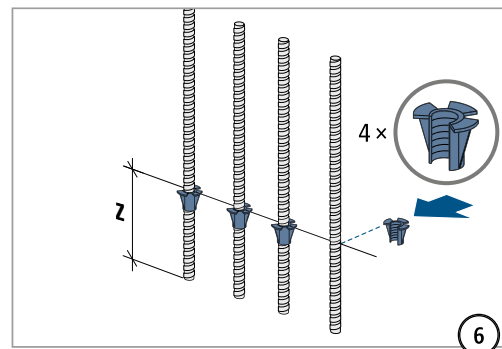
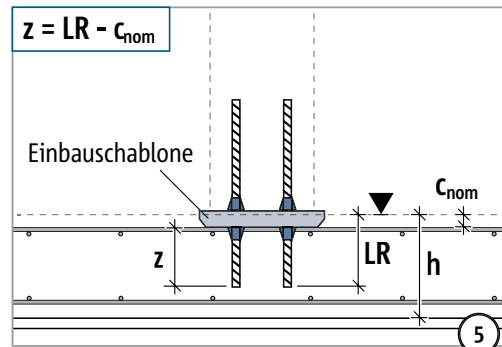
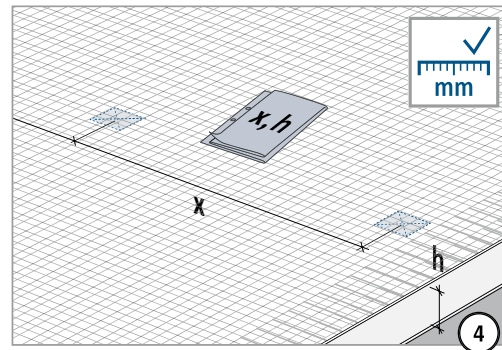
*DE: V14/10 PAGEL-Unterstopfmörtel



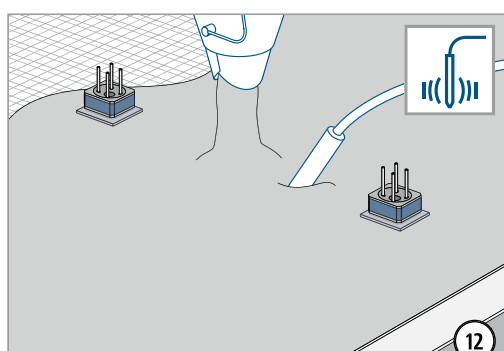
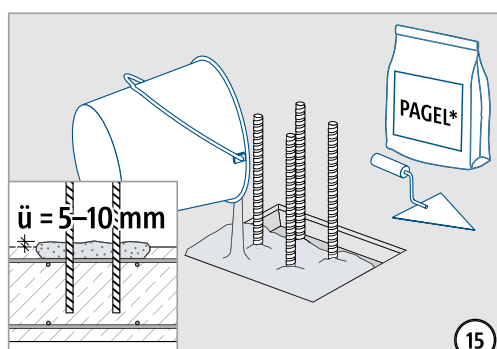
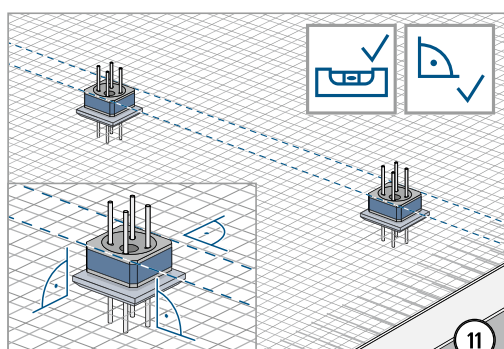
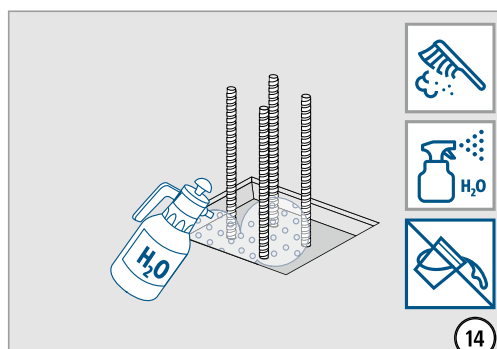
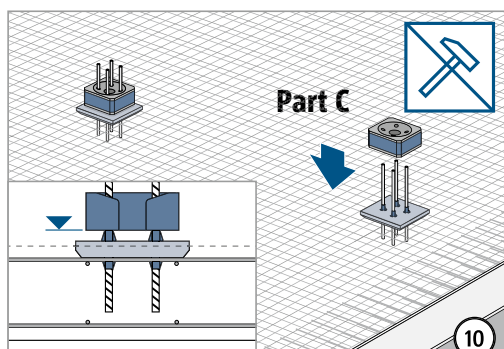
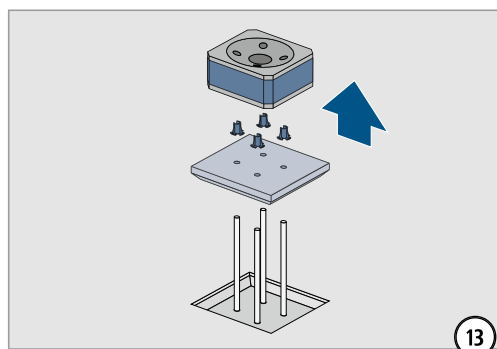
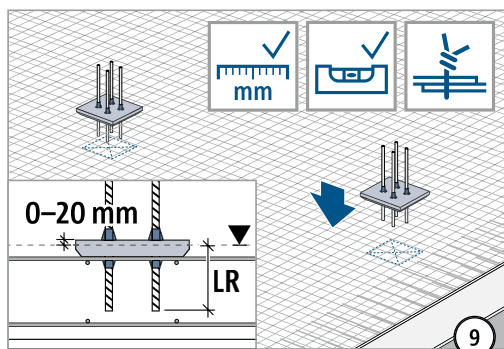
Montageprotokoll verwenden.



Bei Halbfertigteildecken und $h < 240$ mm prüfen, ob eine Aussparung erforderlich ist, um LR zu verankern.



Einbauanleitung – Stützenfuß Ort beton



Bei $c_{nom} = 35 \text{ mm}$ und $\bar{u} = 5 \text{ mm}$ und

B250: Füllen mit ca. 3,3 Liter PAGEL V14/10

B300: Füllen mit ca. 4,6 Liter PAGEL V14/10

B350: Füllen mit ca. 6,1 Liter PAGEL V14/10

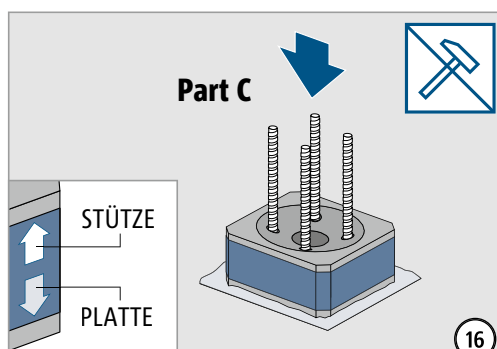
B400: Füllen mit ca. 7,7 Liter PAGEL V14/10



Achtung: Kontakt zwischen Rüttler und Einbauschablone vermeiden.

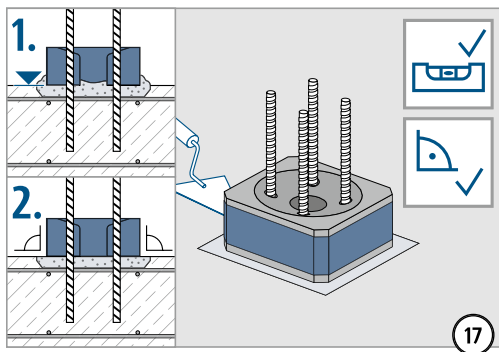


bei 20 °C
min. 24 h



Temperatur (C°)	Wartezeit (h)
≥ 20	24
15	30
10	40
5	50

Einbauanleitung – Stützenfuß Ortbeton



bei 20 °C
min. 24 h
45 N/mm²

