

Schöck Isokorb® XT/T Typ KL/KP



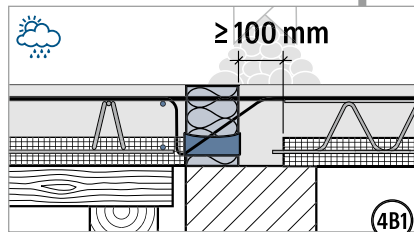
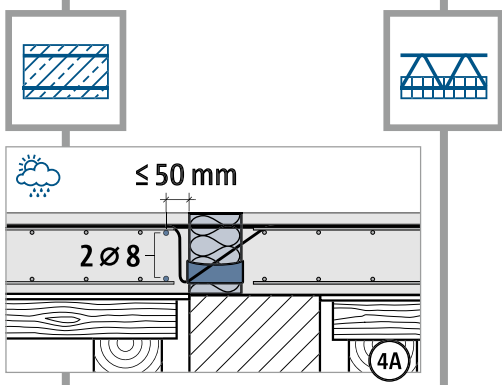
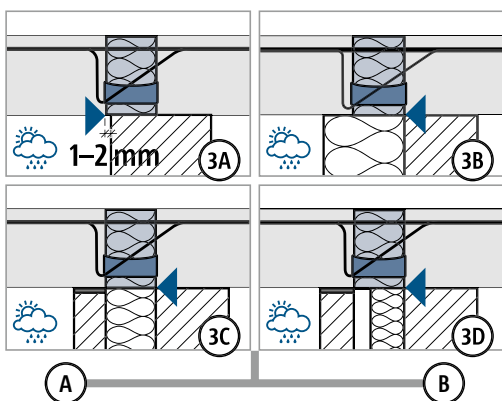
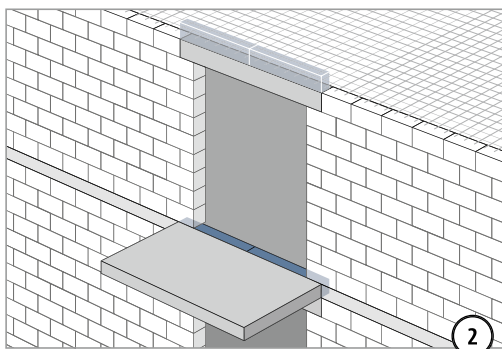
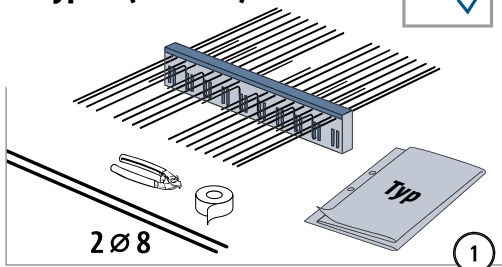
XT/T
Typ KL/KP

Stahlbeton – Stahlbeton

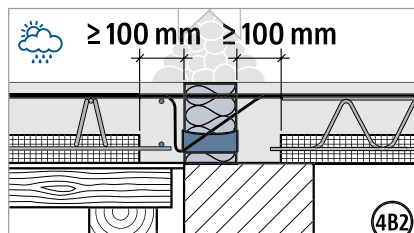
Einbauanleitung

XT Typ KL (M1–M10)
T Typ KL (M1–M12)

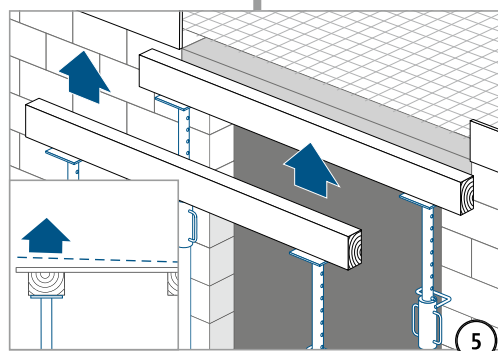
Typ ✓



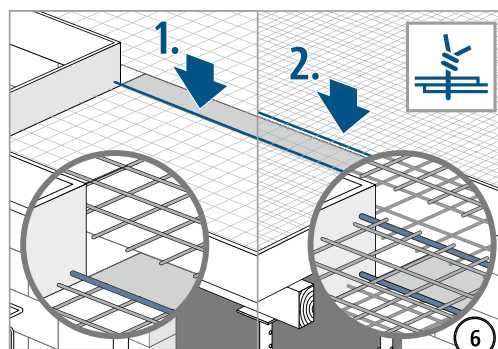
Druckfuge unbedingt mit Ort beton
verfüllen! Fugenbreite ≥ 100 mm.



Druckfuge unbedingt mit Ort beton
verfüllen! Fugenbreite ≥ 100 mm.



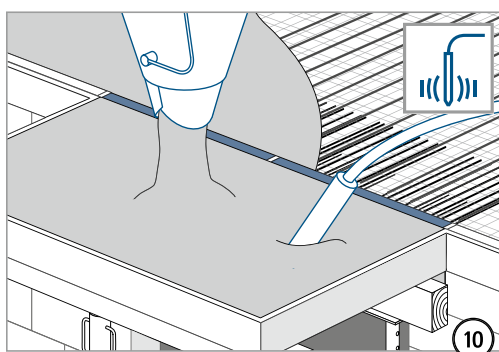
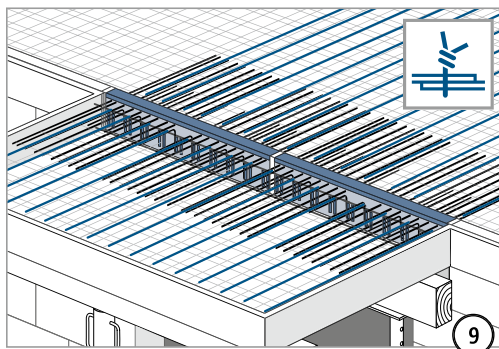
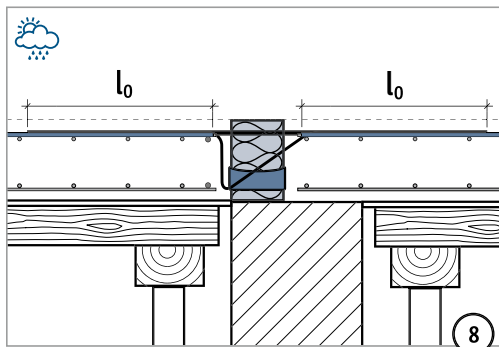
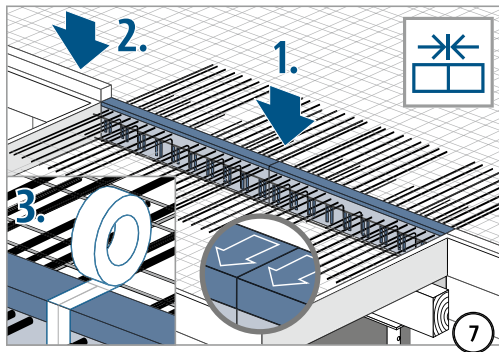
Schalung gemäß Werkplan überhöhen.



XT/T
Typ KL/KP

Stahlbeton – Stahlbeton

Einbauanleitung



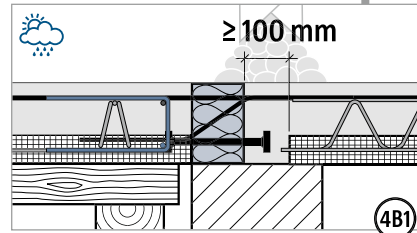
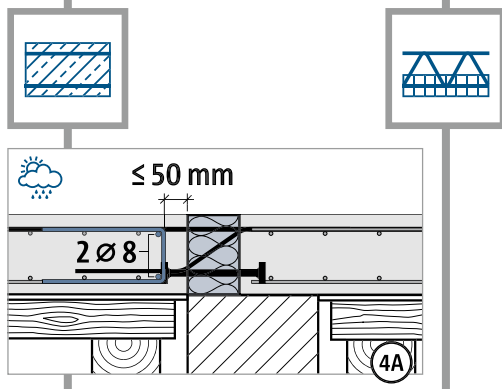
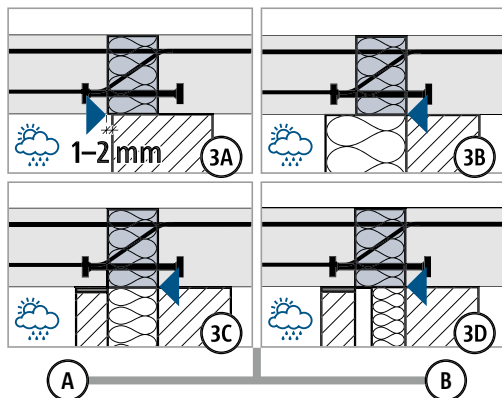
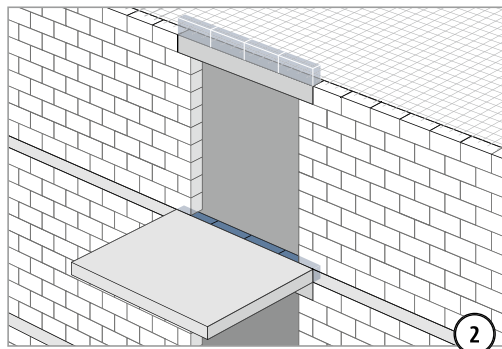
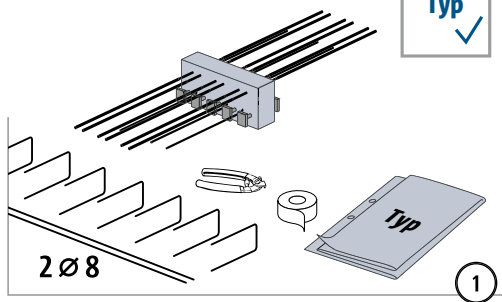
XT/T
Typ KL/KP

Stahlbeton – Stahlbeton

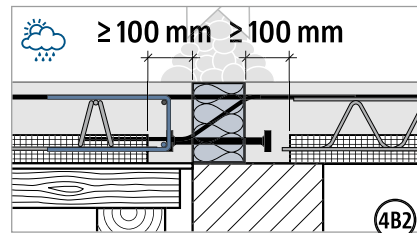
Einbauanleitung

XT Typ KP (M11)

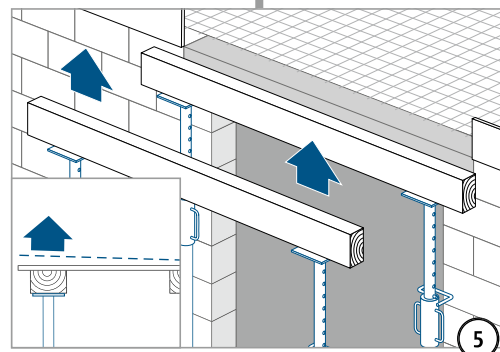
Typ ✓



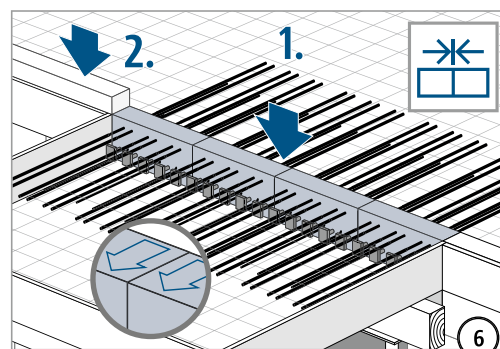
Druckfuge unbedingt mit Ort beton
verfüllen! Fugenbreite ≥ 100 mm.



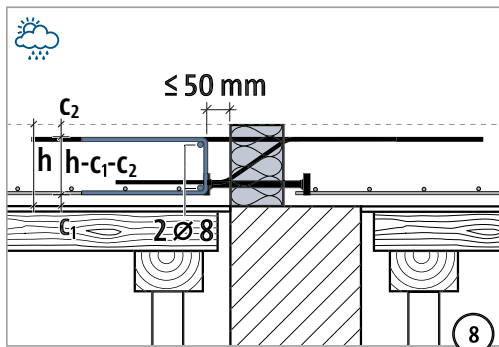
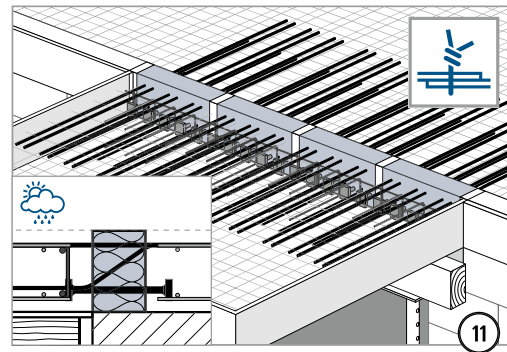
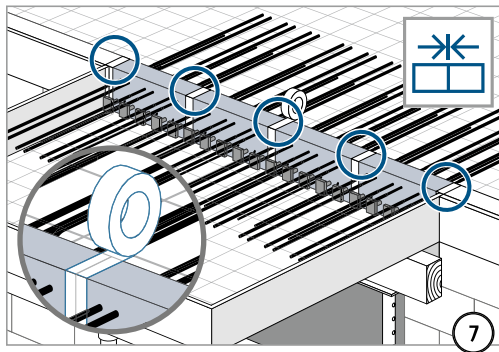
Druckfuge unbedingt mit Ort beton
verfüllen! Fugenbreite ≥ 100 mm.



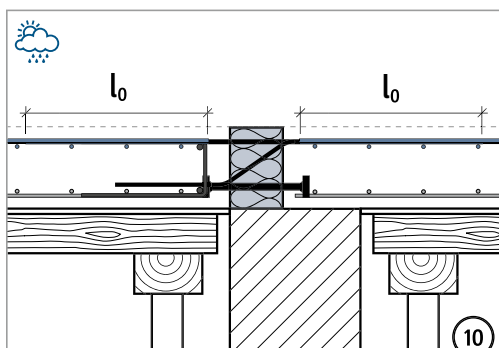
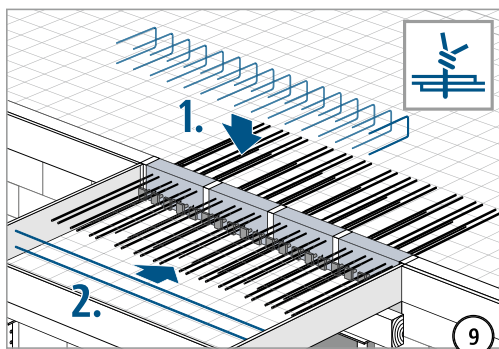
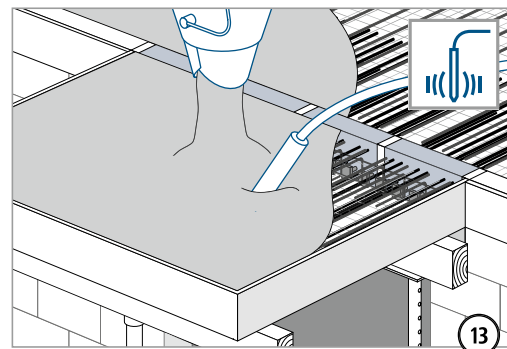
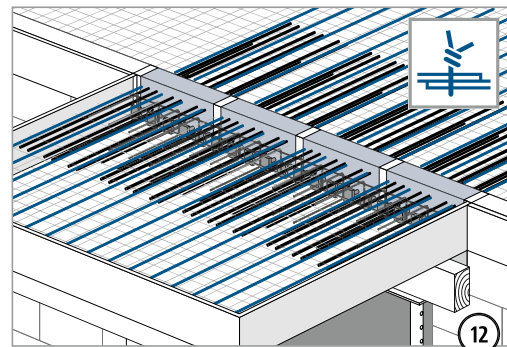
Schalung gemäß Werkplan überhöhen.



Einbauanleitung



Die balkonseitige Lage/Höhe der Querkraftstäbe variiert in Abhängigkeit zur Höhe und zur Tragstufe des Produkts.



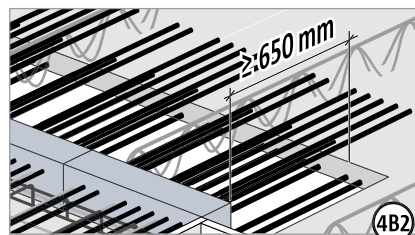
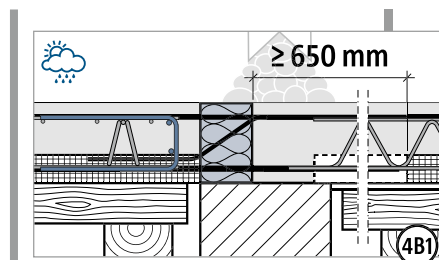
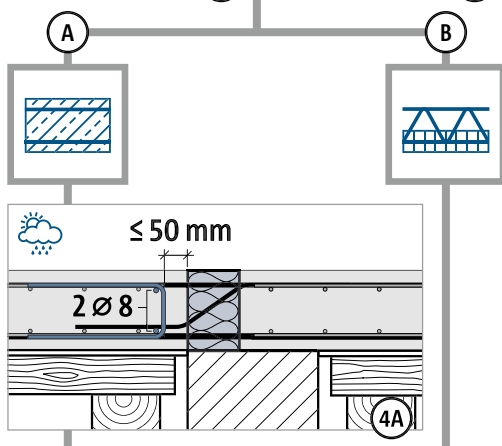
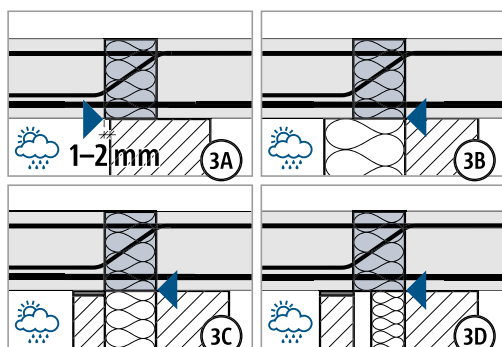
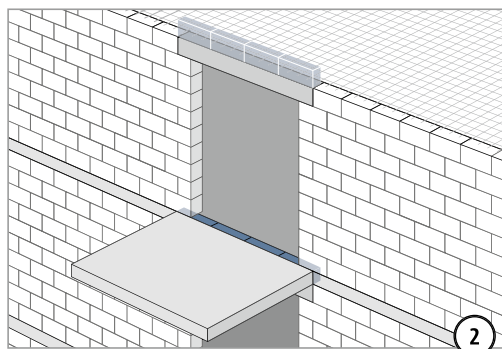
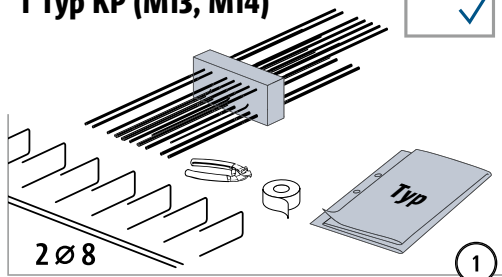
XT/T
Typ KL/KP

Stahlbeton – Stahlbeton

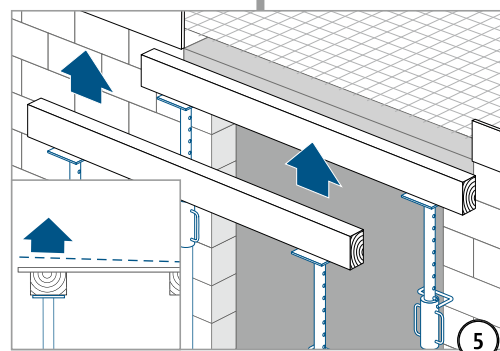
Einbauanleitung

XT Typ KP (M12, M13)
T Typ KP (M13, M14)

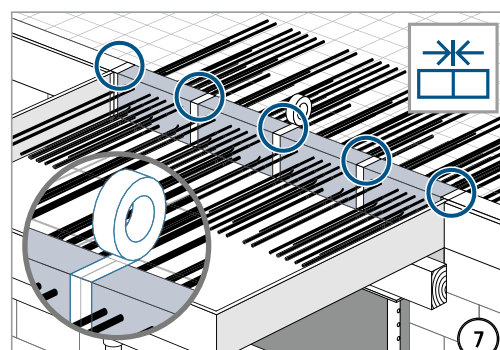
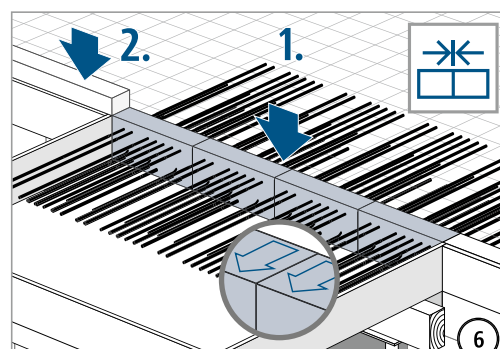
Typ ✓



Halbfertigteildecke im Bereich der Druckstäbe aussparen! Aussparung ≥ 650 mm.



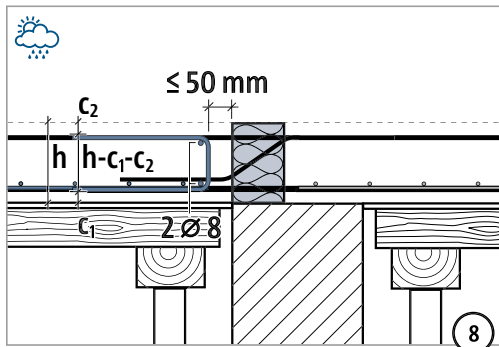
Schalung gemäß Werkplan überhöhen.



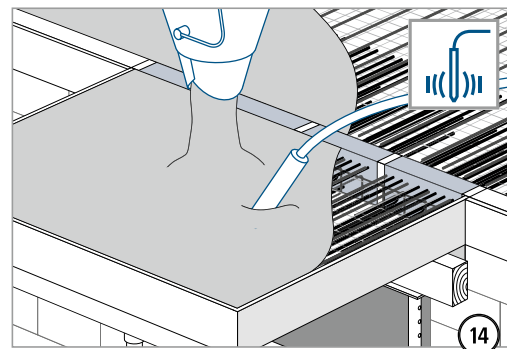
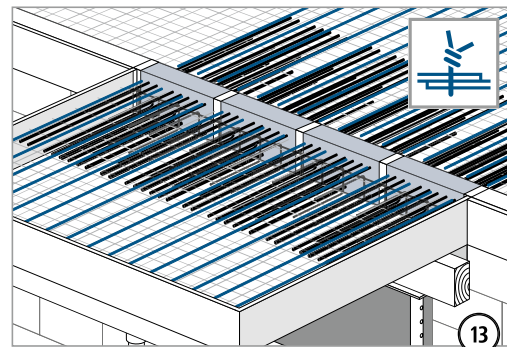
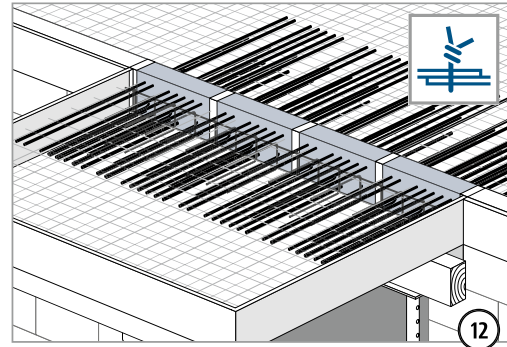
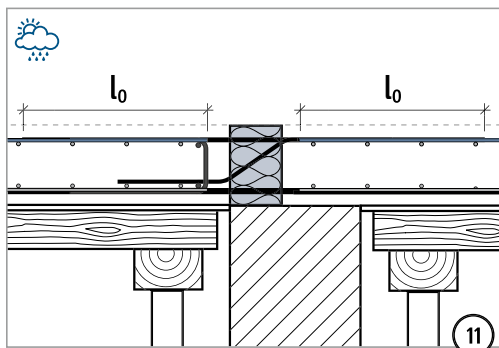
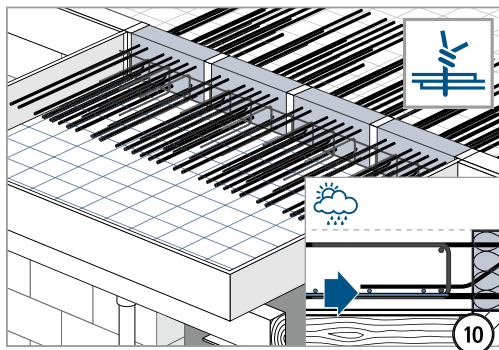
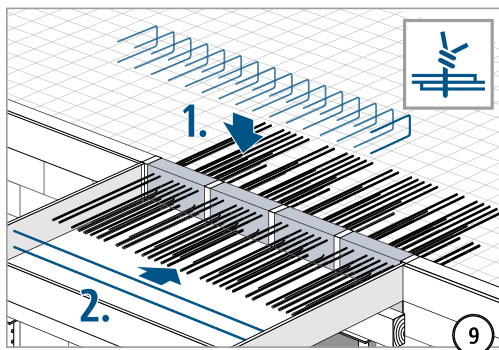
XT/T
Typ KL/KP

Stahlbeton – Stahlbeton

Einbauanleitung



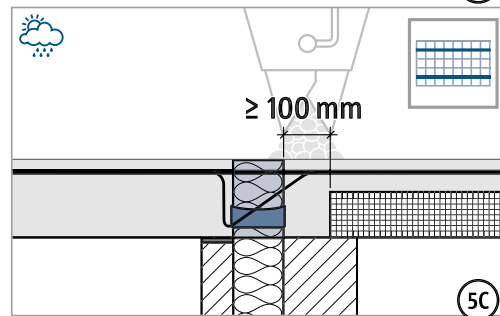
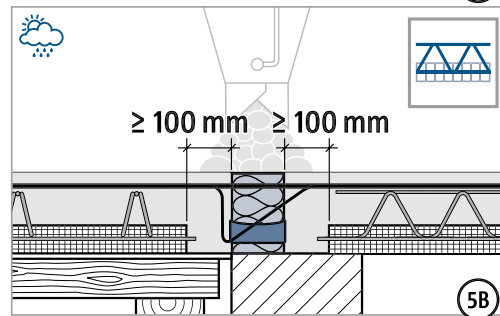
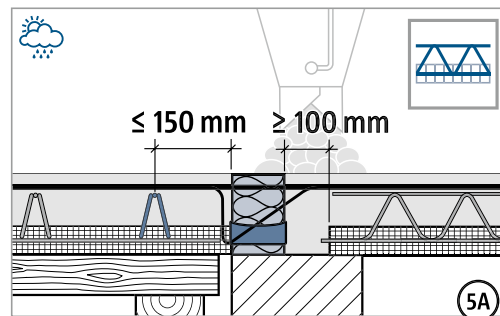
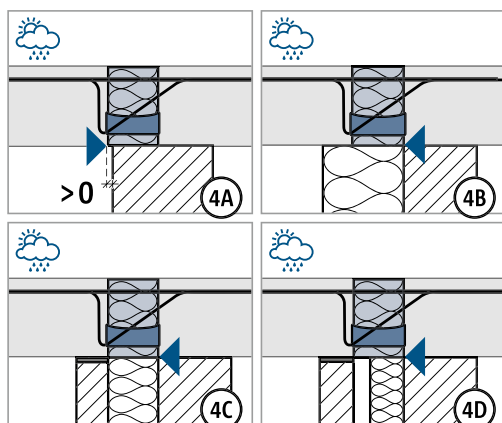
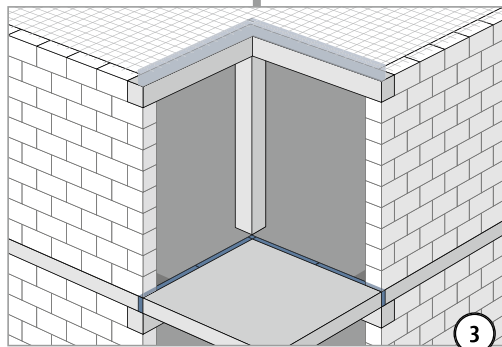
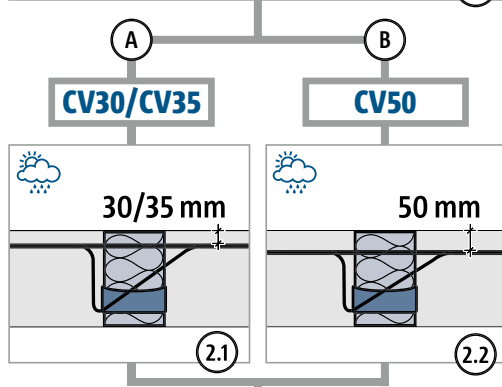
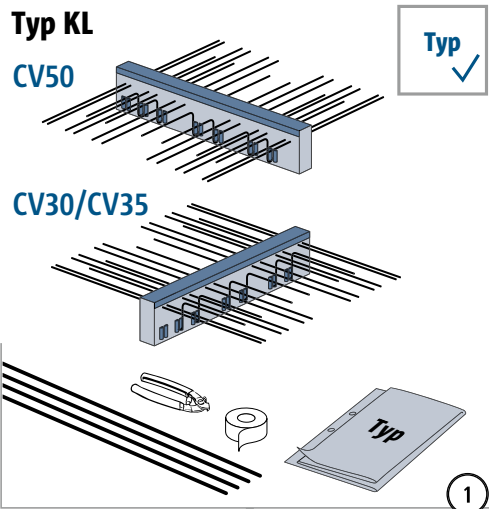
Die balkonseitige Lage/Höhe der Querkraftstäbe variiert in Abhängigkeit zur Höhe und zur Tragstufe des Produkts.



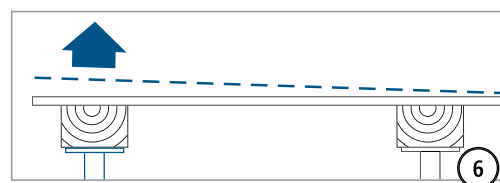
XT/T
Typ KL/KP

Stahlbeton – Stahlbeton

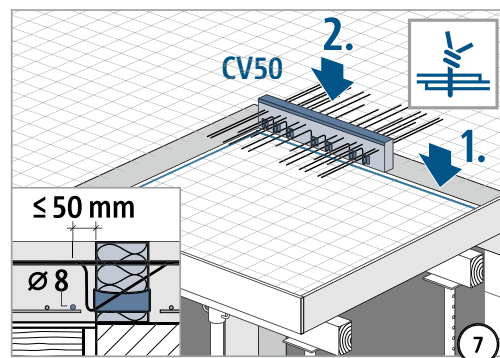
Einbauanleitung – Anschluss über Eck



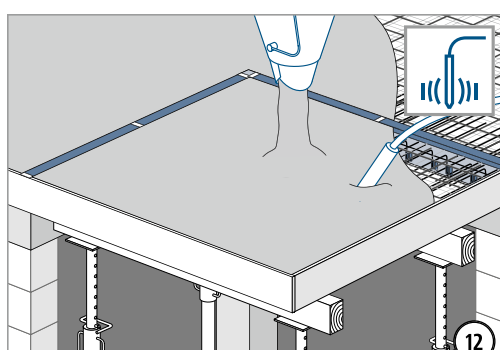
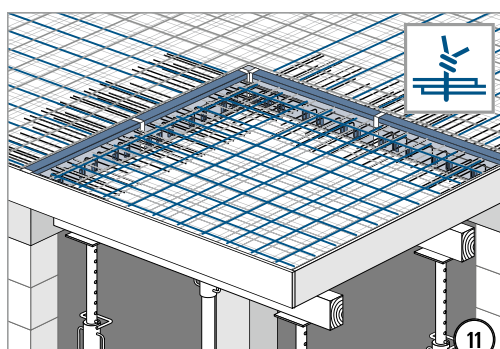
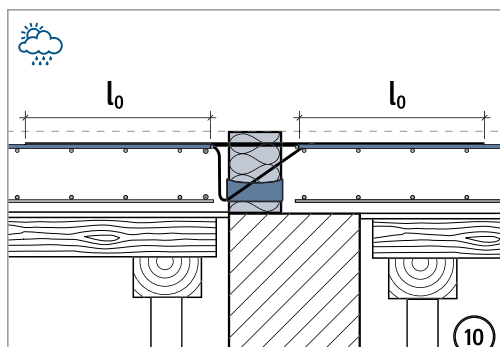
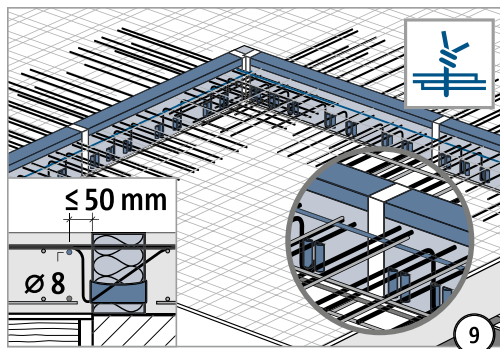
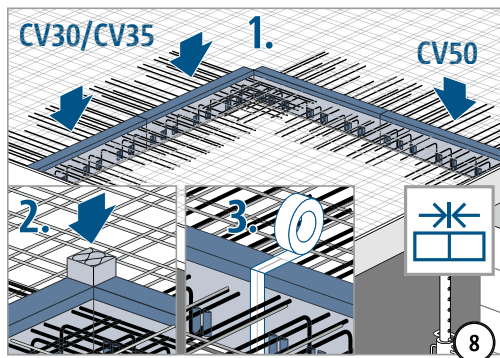
5A–5C: Druckfuge unbedingt mit Ort beton verfüllen! Fugenbreite $\geq 100 \text{ mm}$.



Schalung gemäß Werkplan überhöhen.



Einbauanleitung – Anschluss über Eck



XT/T
Typ KL/KP

Stahlbeton – Stahlbeton