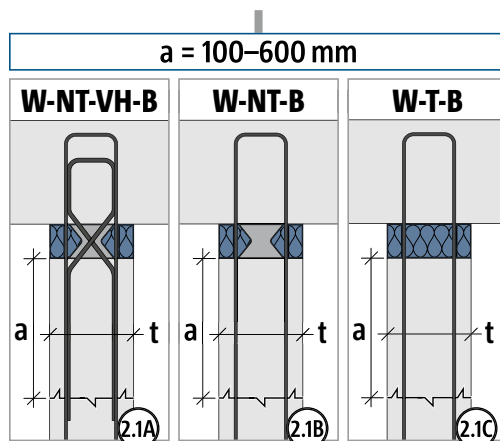
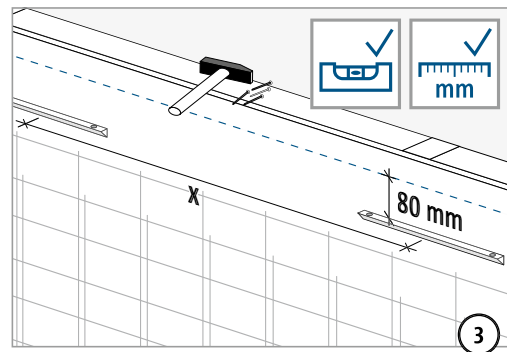
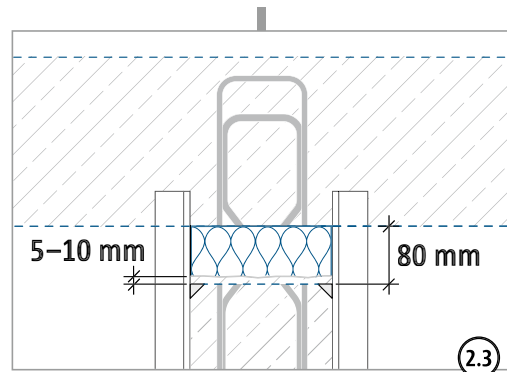
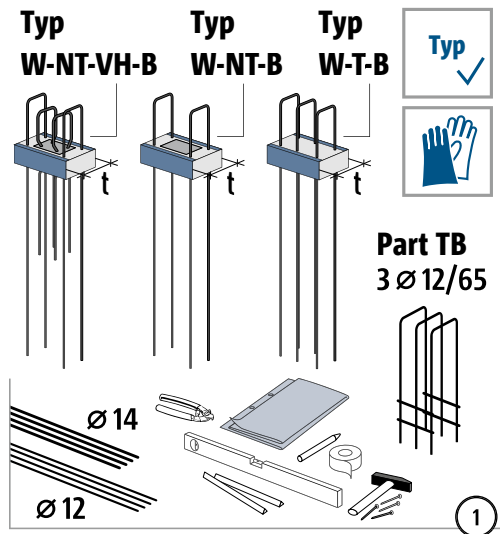
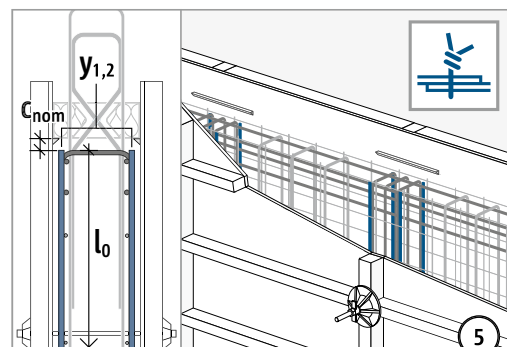
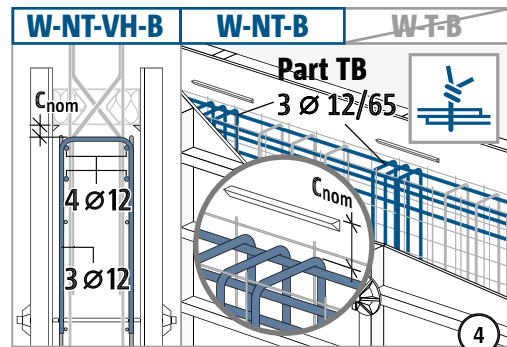
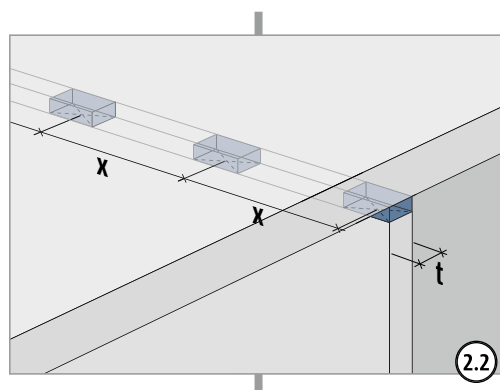


Einbauanleitung Wandkopf



! Ab Unterkante Dämmkörper Sconnex® Typ W ist ein 2. Betonierabschnitt von 100–600 mm vorzusehen.



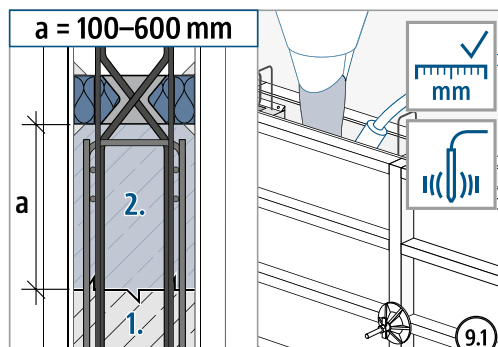
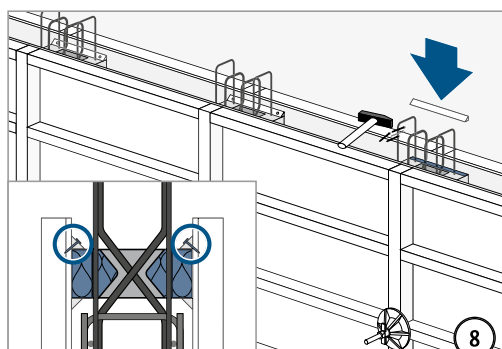
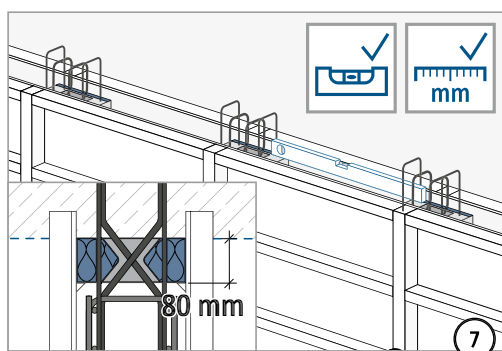
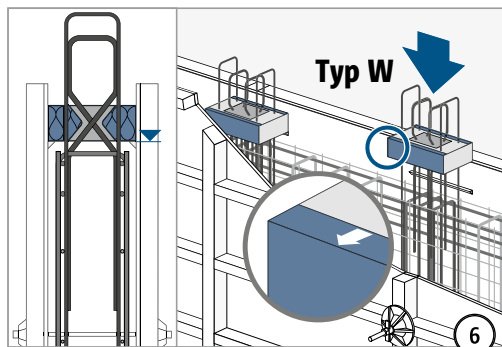
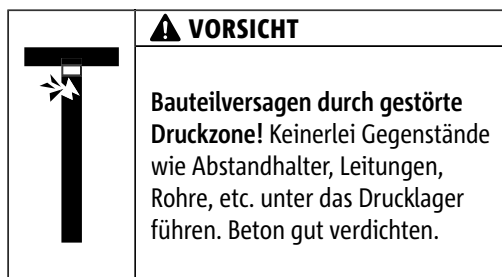
y₁: 2 x 2 Ø 14 für Typ W-NT-VH-B, W-NT-B

y₂: 2 x 3 Ø 14 für Typ W-T-B

Typ W

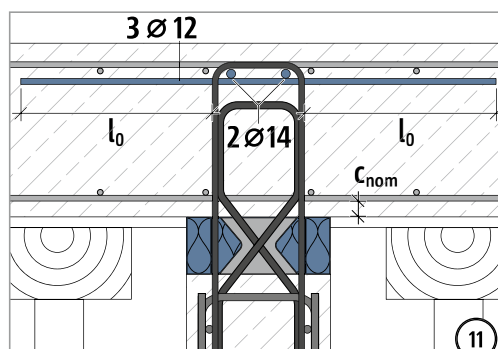
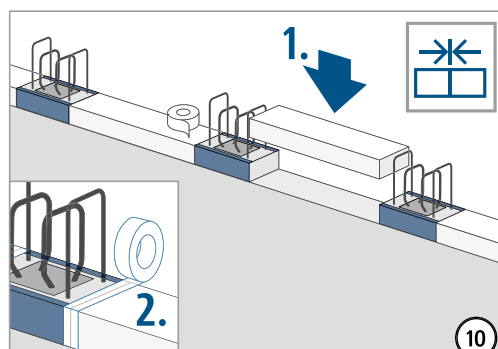
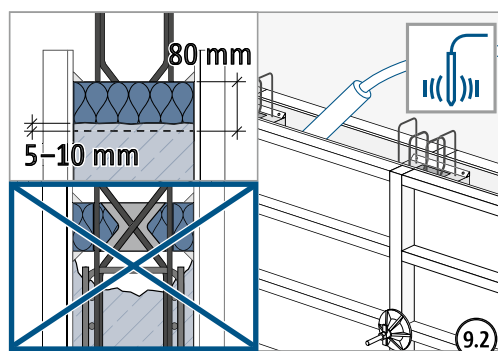
Stahlbeton – Stahlbeton

Einbauanleitung Wandkopf

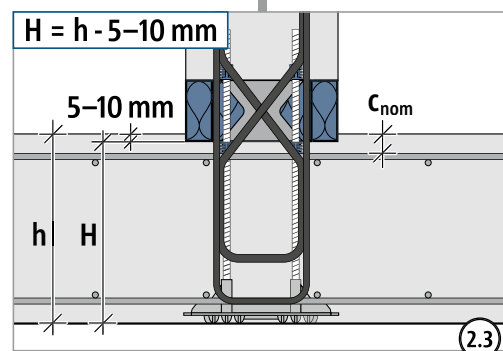
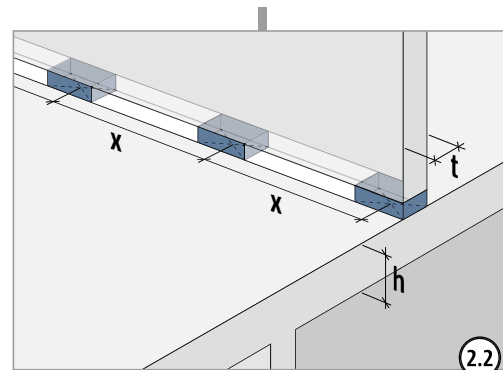
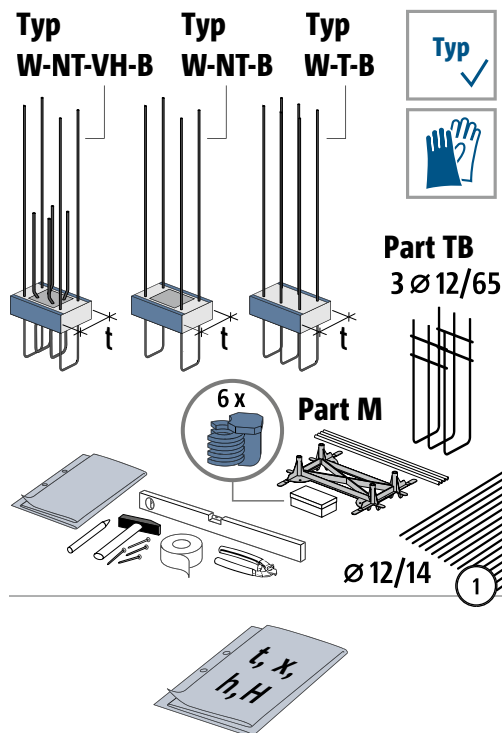


! Ab Unterkante Dämmkörper Sconnex® Typ W ist ein 2. Betonierabschnitt von 100–600 mm vorzusehen.

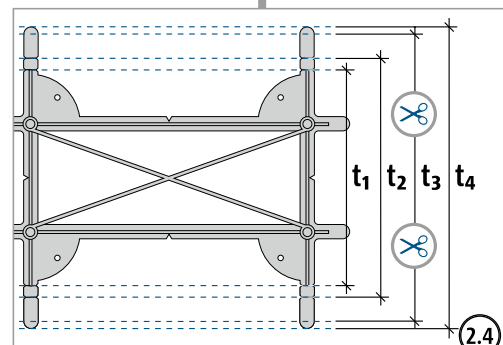
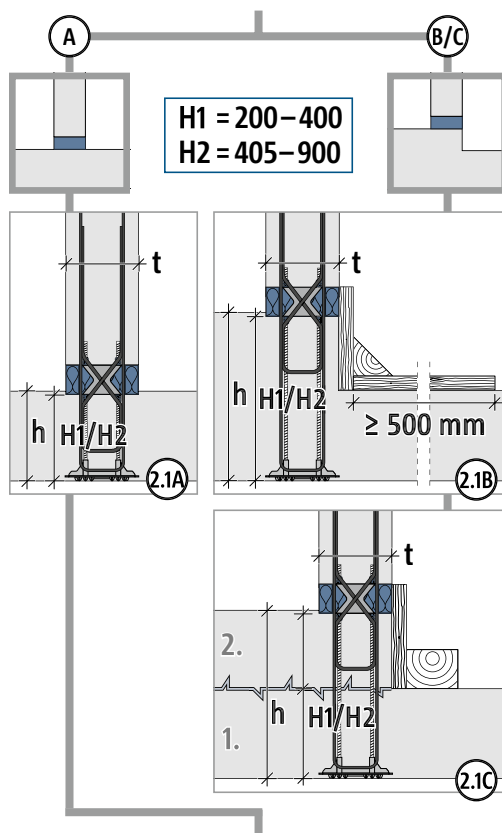
⌚ Zwischen 1. und 2. Betonierabschnitt ist eine Erstarrungszeit von mindestens 45–75 Minuten einzuhalten.



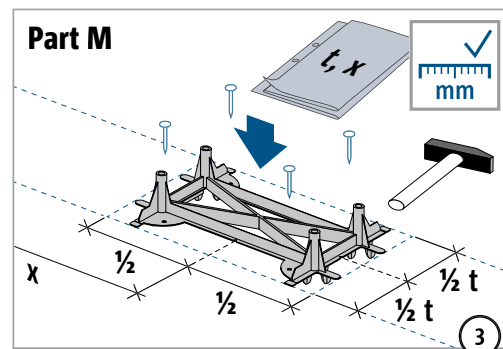
Einbauanleitung Wandfuß



H > 600 mm: Ab Unterkante Dämmkörper Sconnex® Typ W ist ein 2. Betonierabschnitt von 100–600 mm vorzusehen.



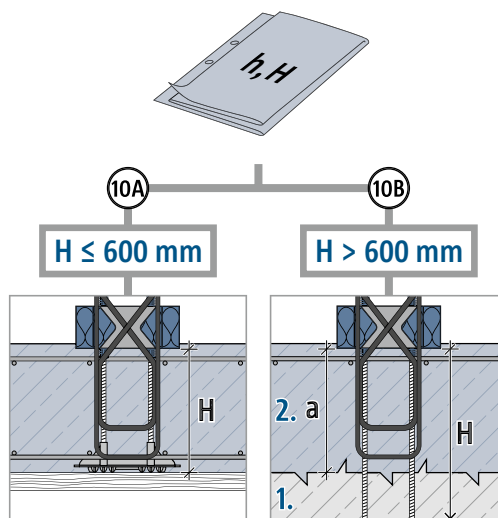
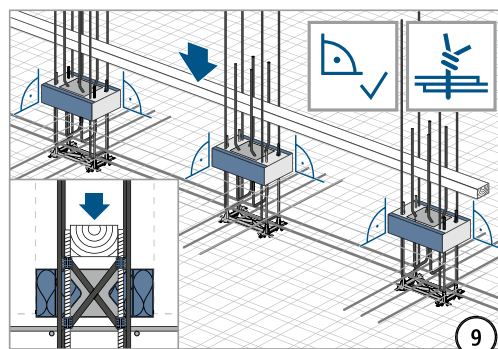
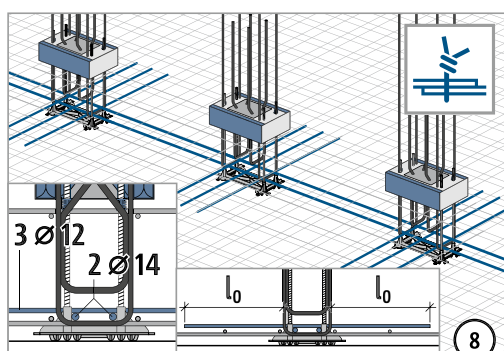
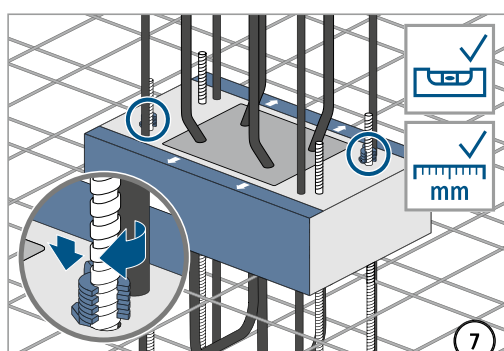
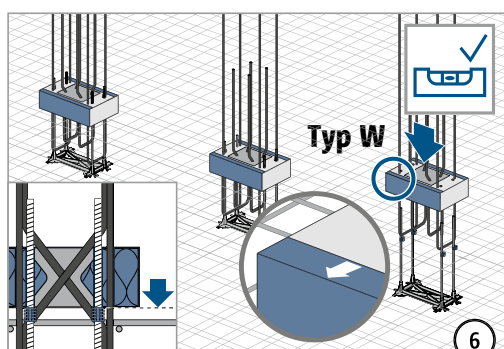
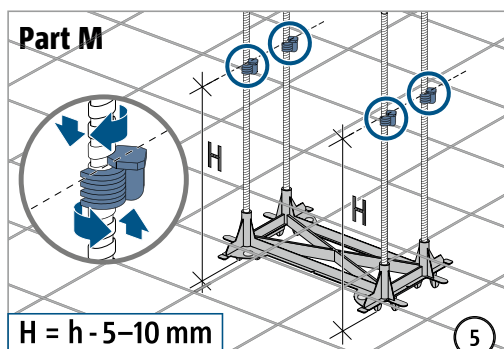
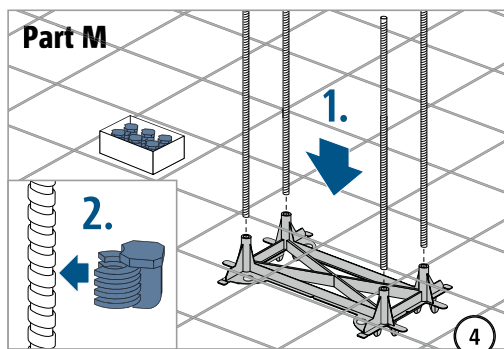
t₁ = 180 mm, t₂ = 200 mm, t₃ = 240 mm, t₄ = 250 mm



Typ W

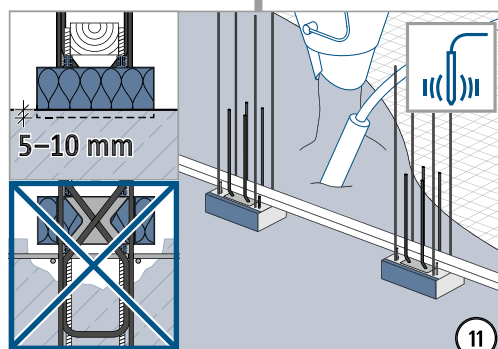
Stahlbeton – Stahlbeton

Einbauanleitung Wandfuß

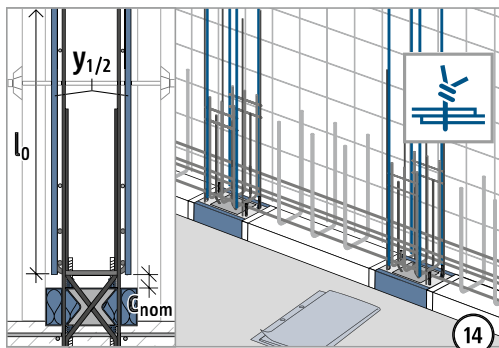
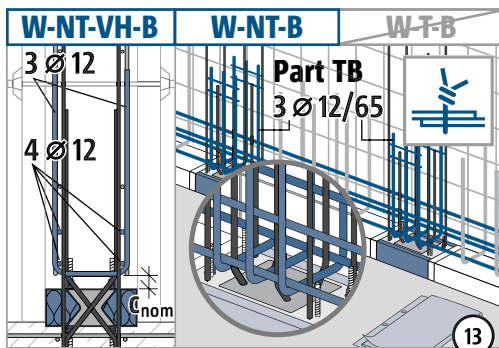
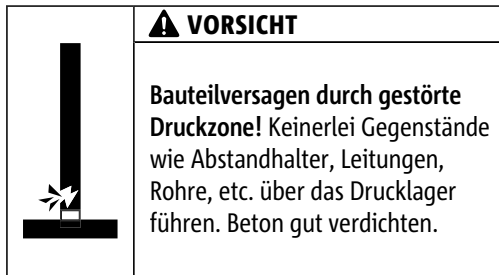
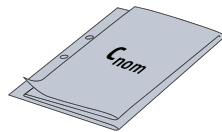
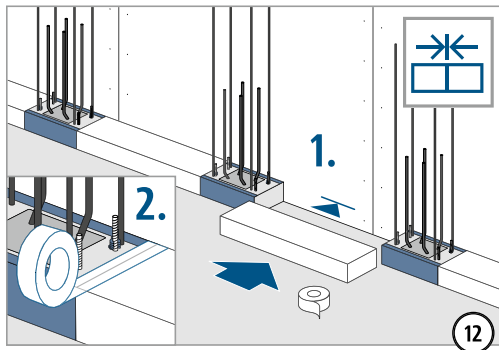


Ab Unterkante Dämmkörper Sconnex® Typ W ist ein 2. Betonierabschnitt von $a = 100-600 \text{ mm}$ vorzusehen.

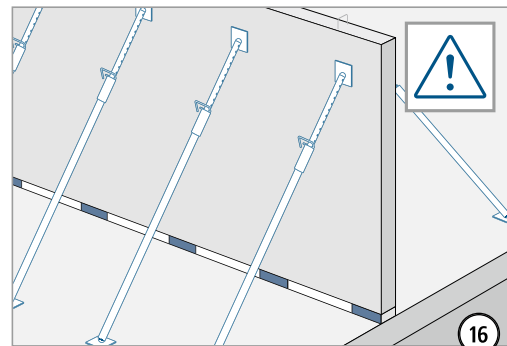
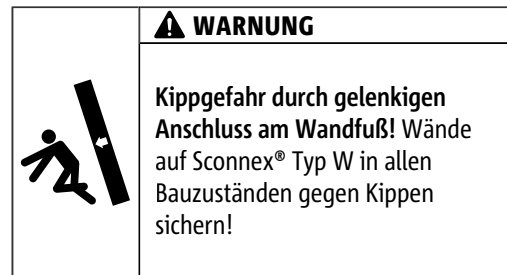
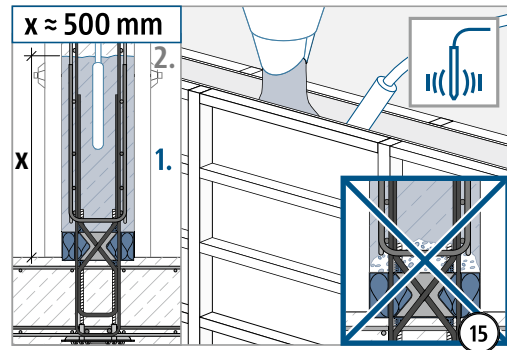
Zwischen 1. und 2. Betonierabschnitt ist eine Erstarrungszeit von mindestens 45-75 Minuten einzuhalten.



Einbauanleitung Wandfuß



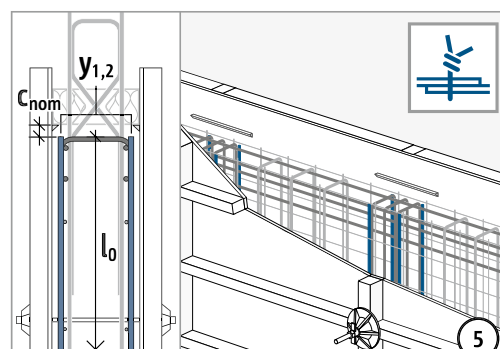
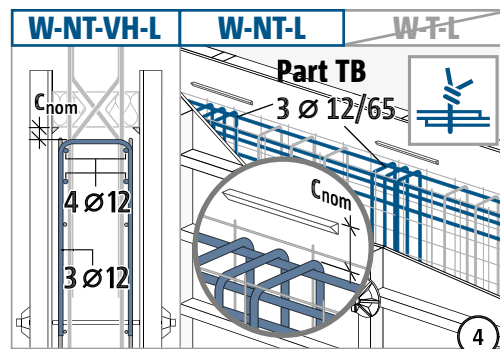
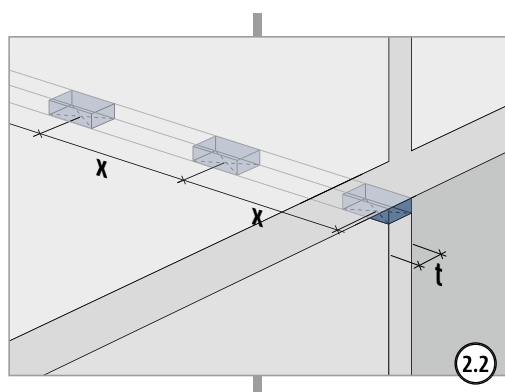
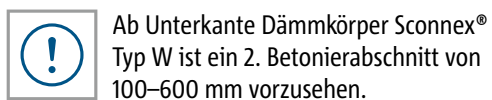
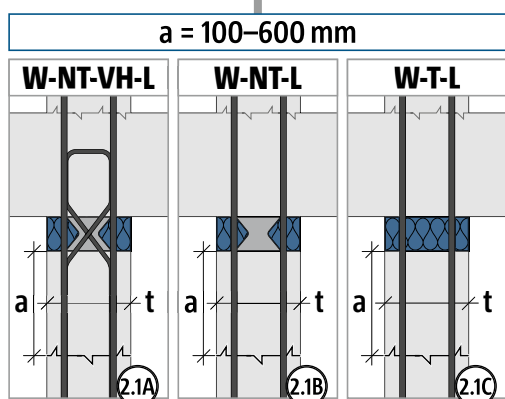
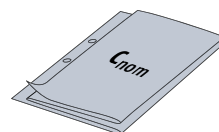
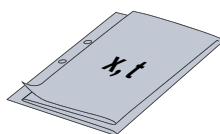
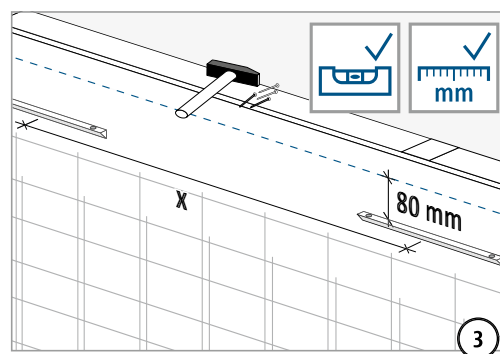
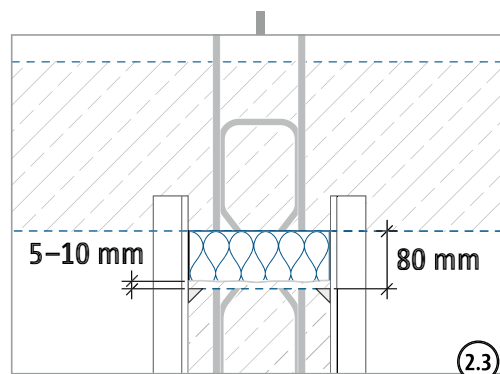
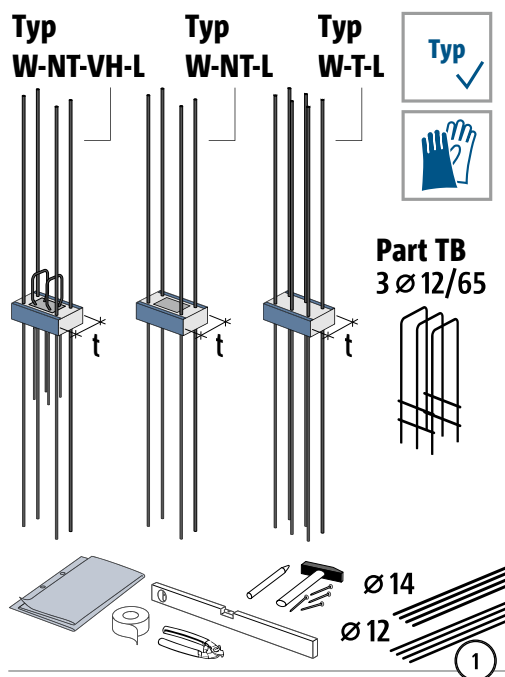
y_1 : 2 x 2 Ø 14 für Typ W-NT-VH-B, W-NT-B
 y_2 : 2 x 3 Ø 14 für Typ W-T-B



Typ W

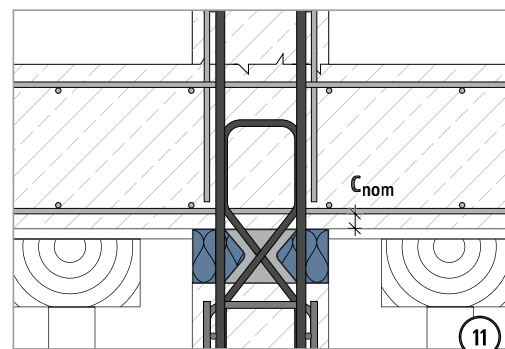
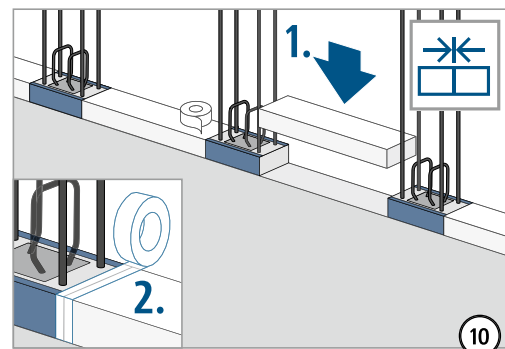
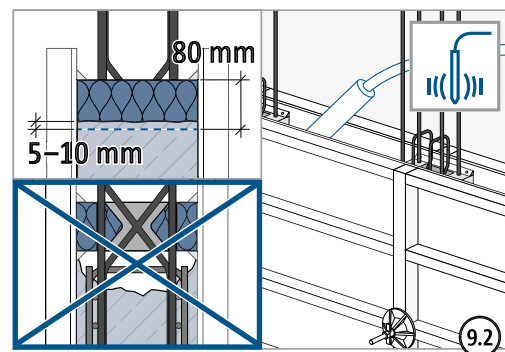
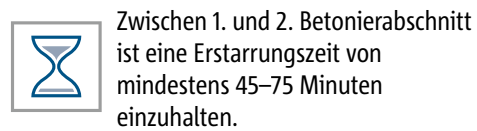
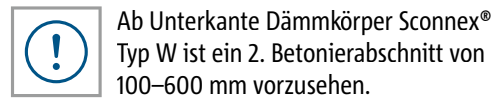
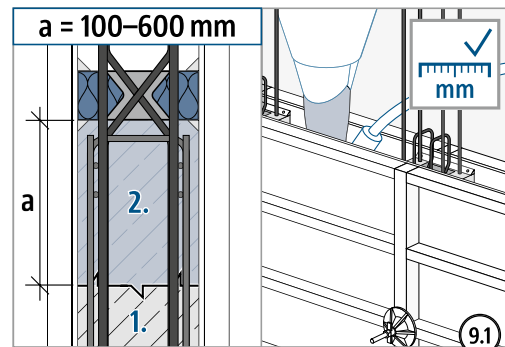
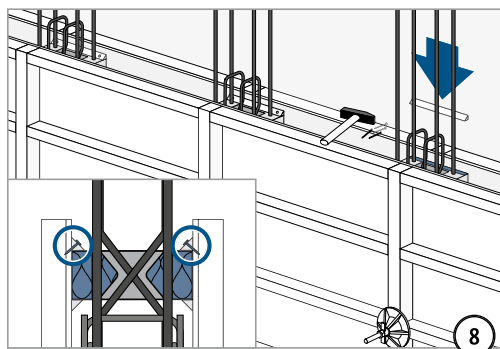
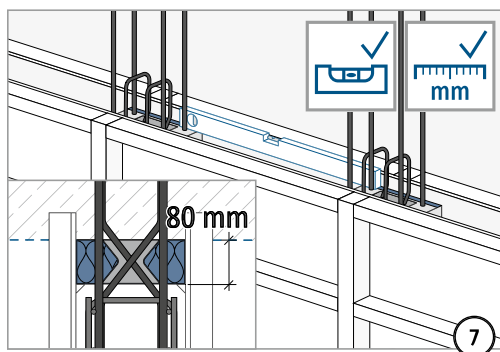
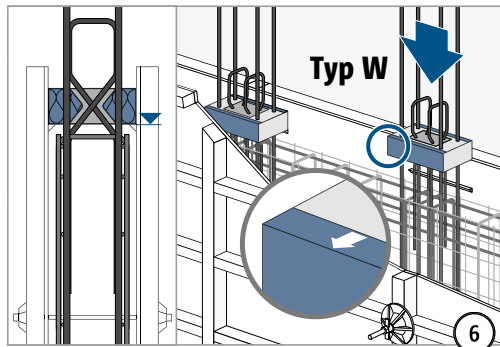
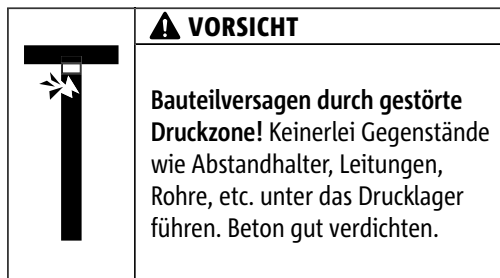
Stahlbeton – Stahlbeton

Einbauanleitung Wandkopf



y₁: 2 x 2 Ø 14 für Typ W-NT-VH-L, W-NT-L
y₂: 2 x 3 Ø 14 für Typ W-T-L

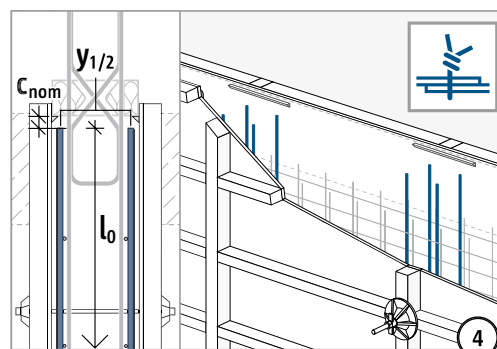
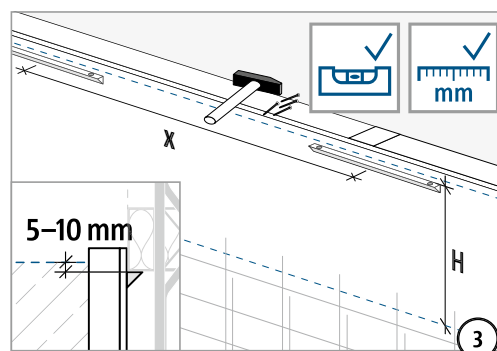
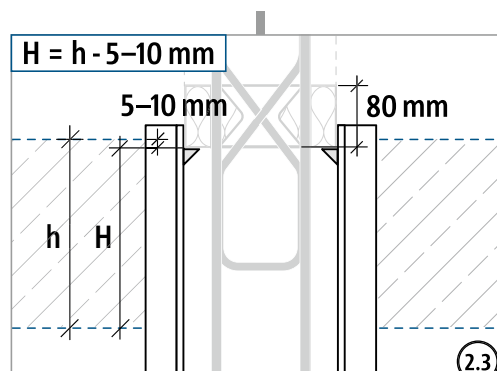
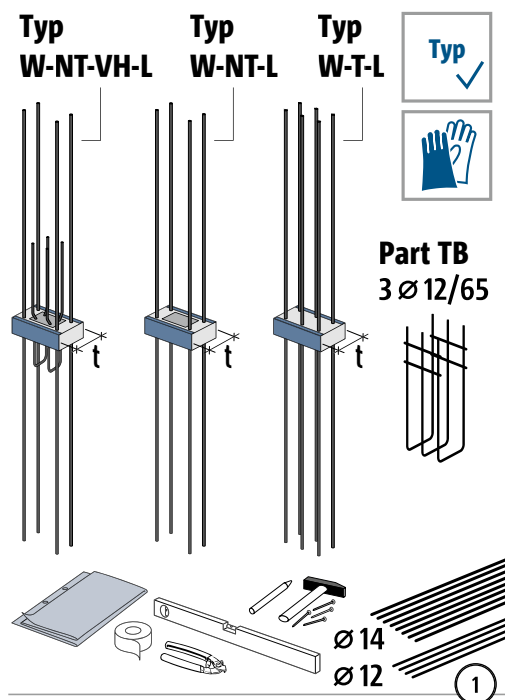
Einbauanleitung Wandkopf



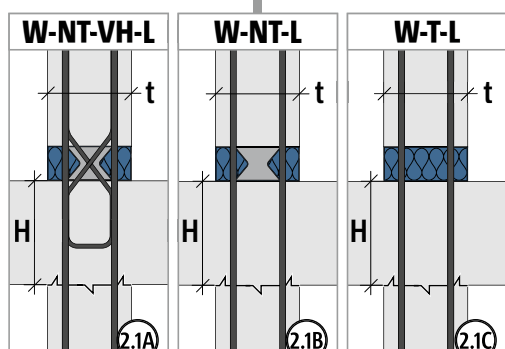
Typ W

Stahlbeton – Stahlbeton

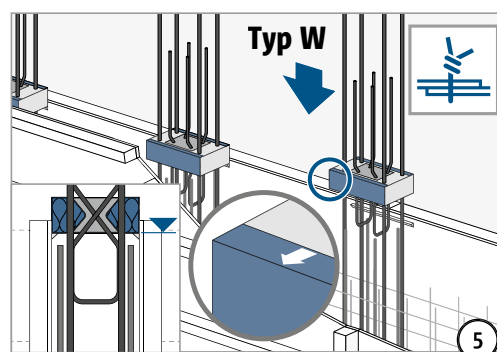
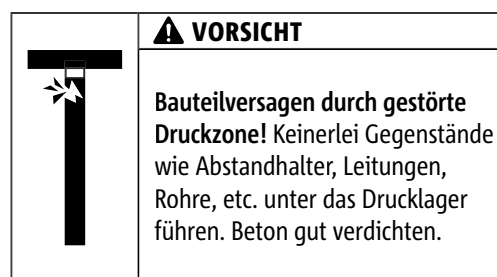
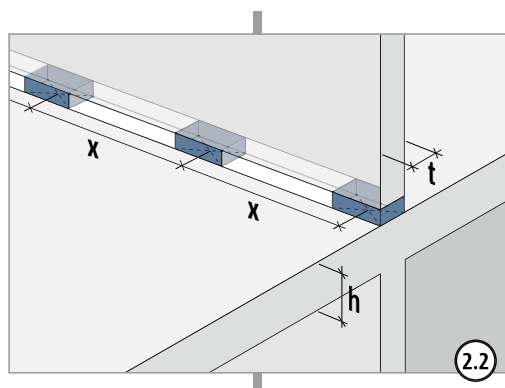
Einbauanleitung Wandfuß



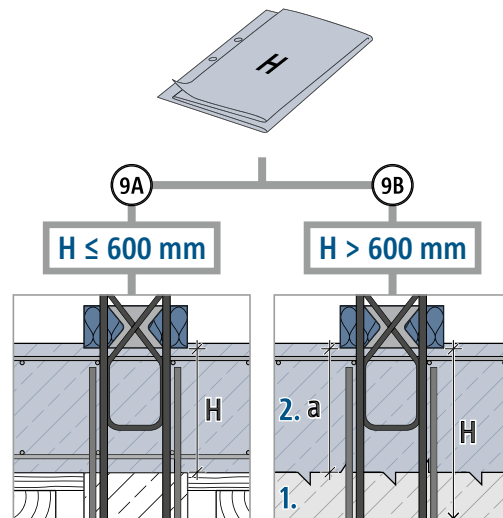
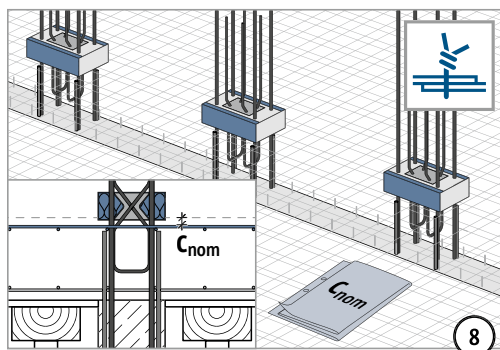
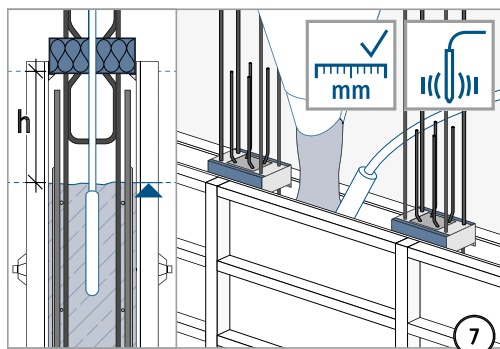
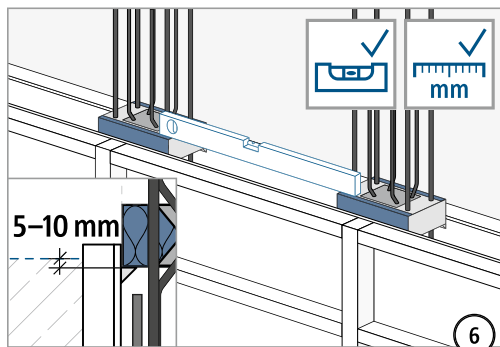
y₁: 2 x 2 Ø 14 für Typ W-NT-VH-L, W-NT-L
y₂: 2 x 3 Ø 14 für Typ W-T-L



H > 600 mm: Ab Unterkante Dämmkörper Sconnex® Typ W ist ein 2. Betonierabschnitt von 100–600 mm vorzusehen.



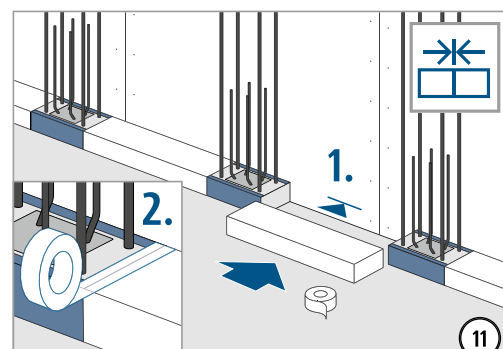
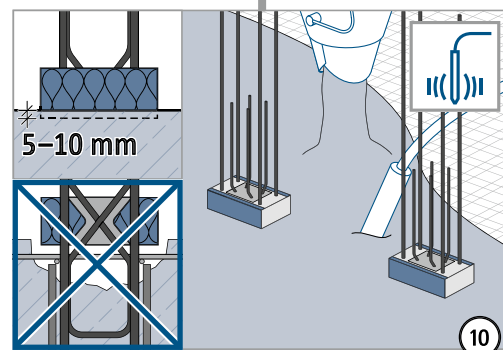
Einbauanleitung Wandfuß



Ab Unterkante Dämmkörper
Sconnex® Typ W ist ein 2.
Betonierabschnitt von $a =$
100–600 mm vorzusehen.



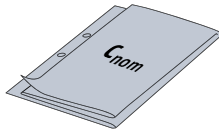
Zwischen 1. und 2.
Betonierabschnitt ist eine
Erstarrungszeit von mindestens
45–75 Minuten einzuhalten.



Typ W

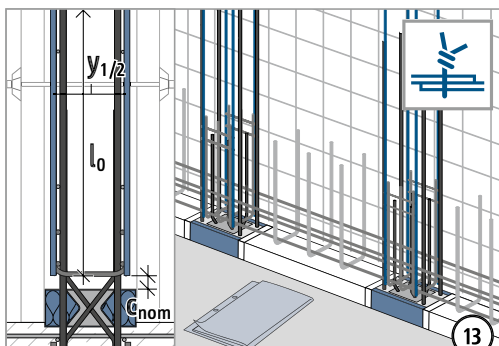
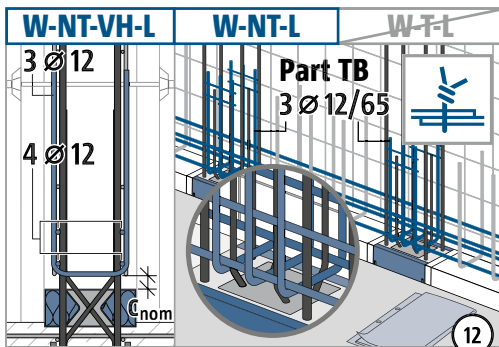
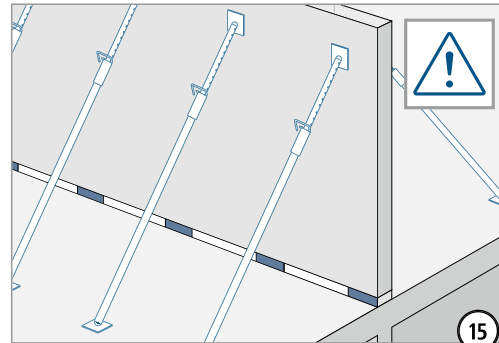
Stahlbeton – Stahlbeton

Einbauanleitung Wandfuß



	⚠ VORSICHT
	Bauteilversagen durch gestörte Druckzone! Keinerlei Gegenstände wie Abstandhalter, Leitungen, Rohre, etc. über das Drucklager führen. Beton gut verdichten.

	⚠ WARNUNG
	Kippgefahr durch gelenkigen Anschluss am Wandfuß! Wände auf Sconnex® Typ W in allen Bauzuständen gegen Kippen sichern!



y_1 : 2 x 2 Ø 14 für Typ W-NT-VH-L, W-NT-L

y_2 : 2 x 3 Ø 14 für Typ W-T-L

