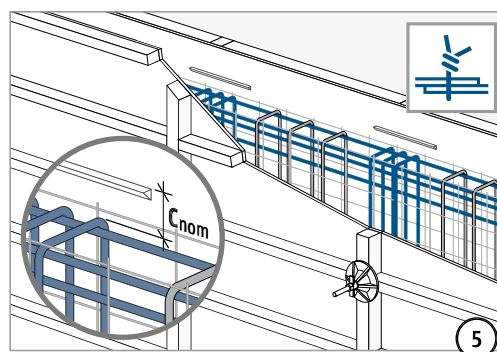
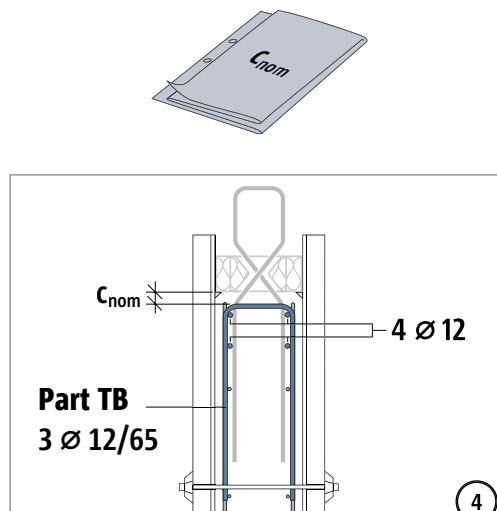
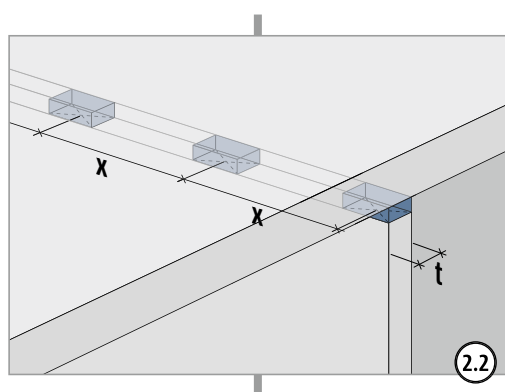
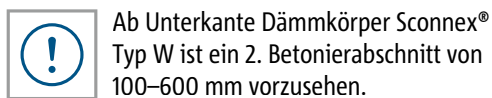
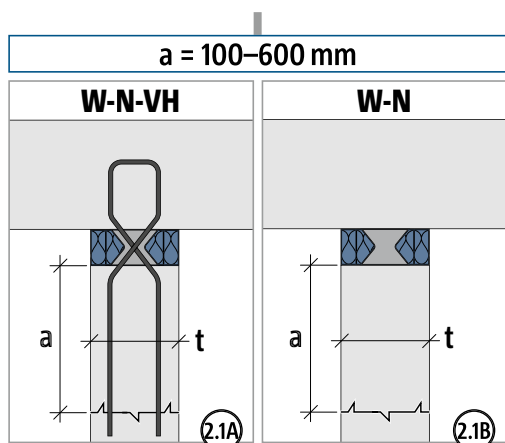
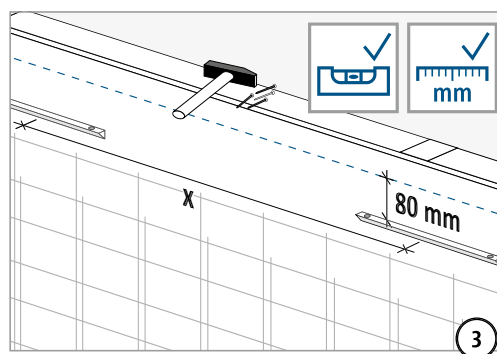
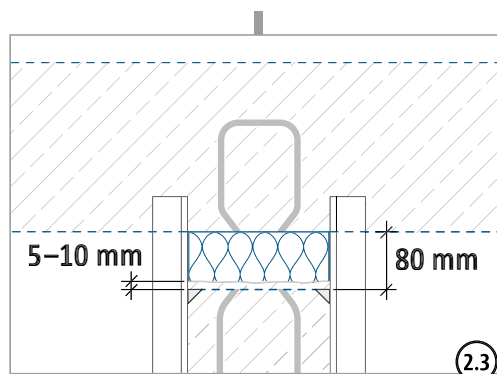
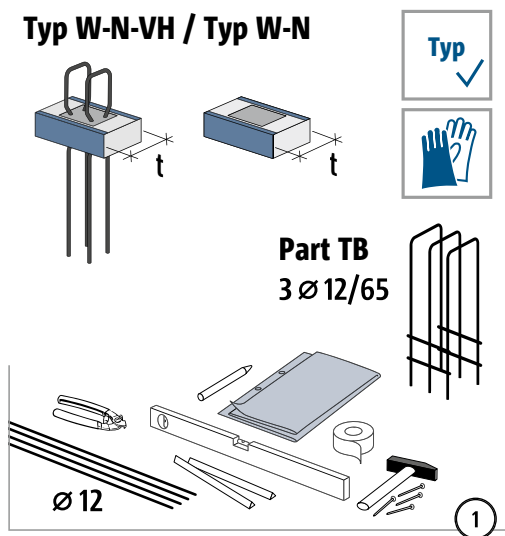
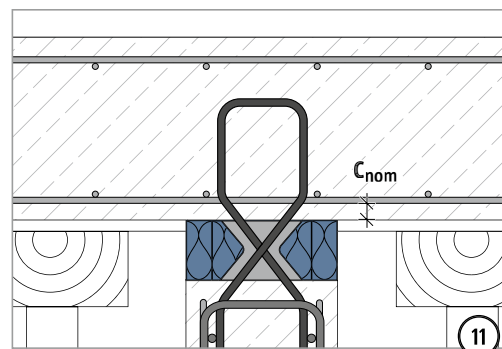
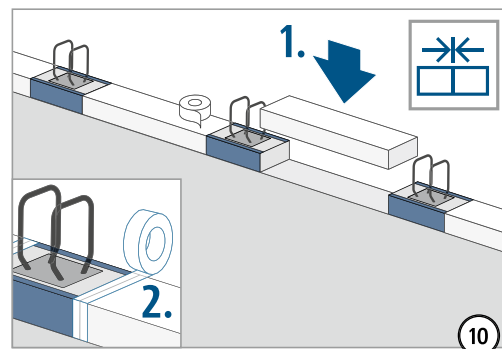
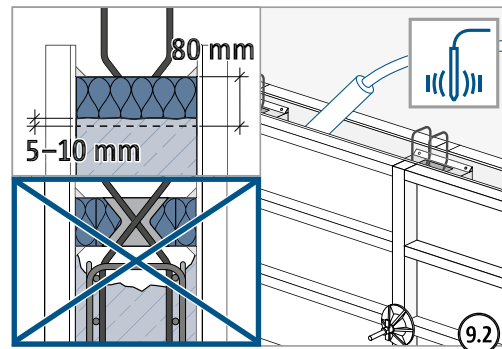
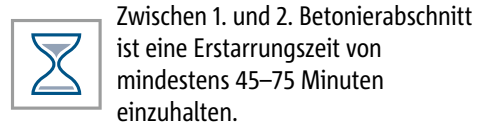
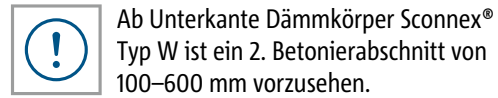
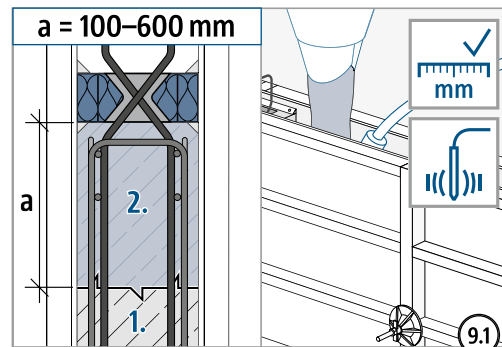
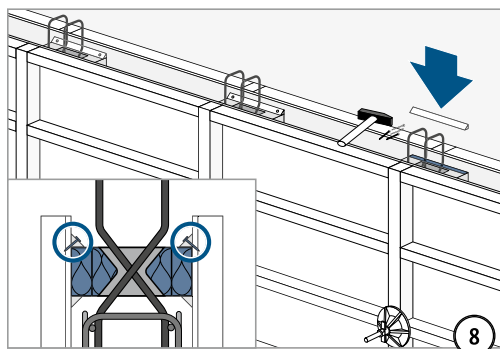
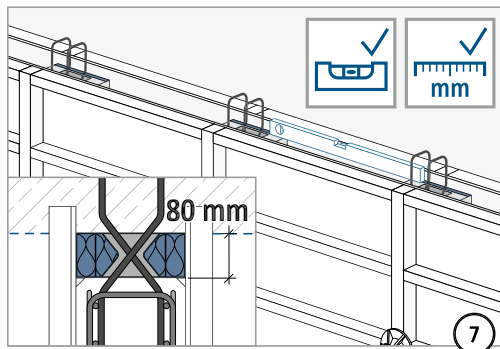
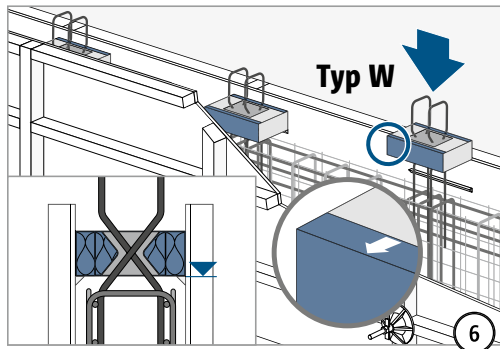
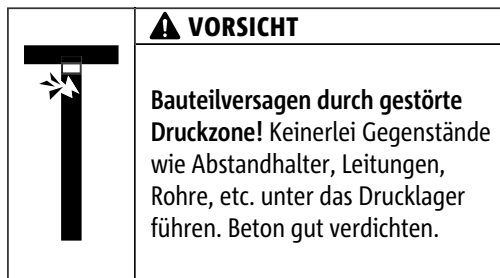


Einbauanleitung Wandkopf

Typ W-N-VH / Typ W-N



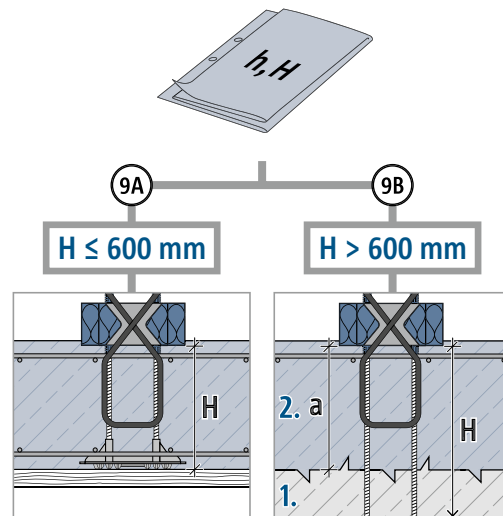
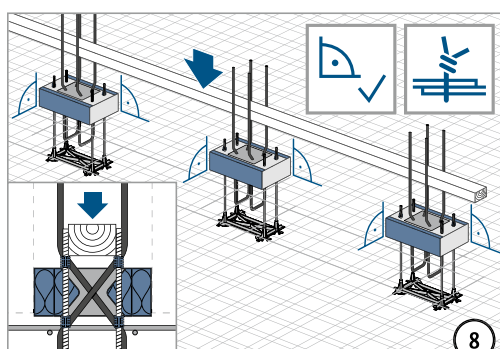
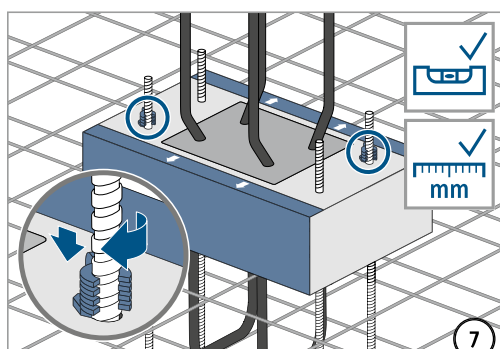
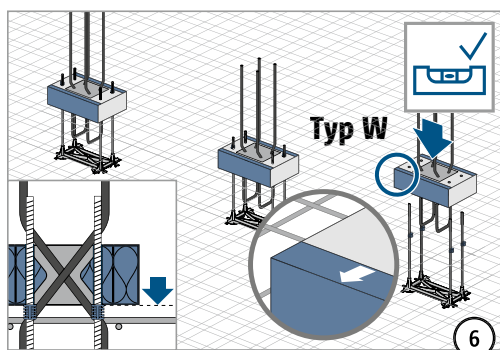
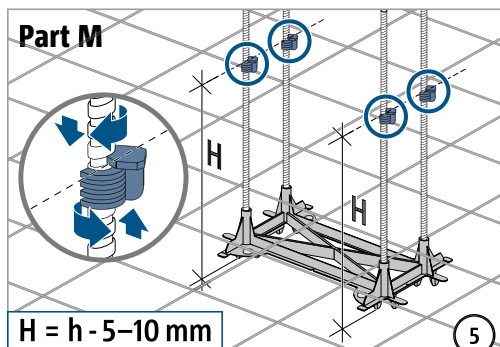
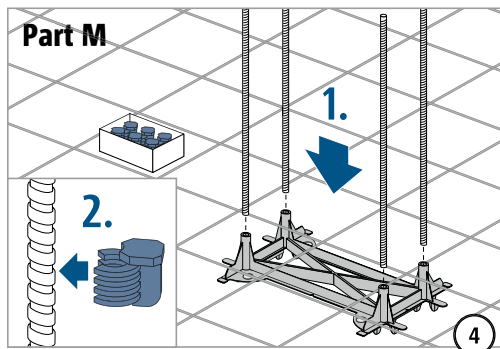
Einbauanleitung Wandkopf



Typ W

Stahlbeton – Stahlbeton

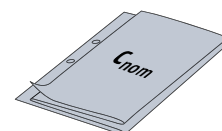
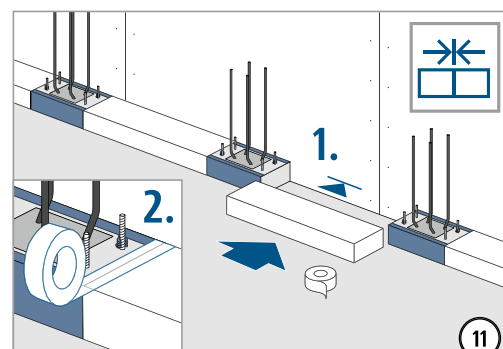
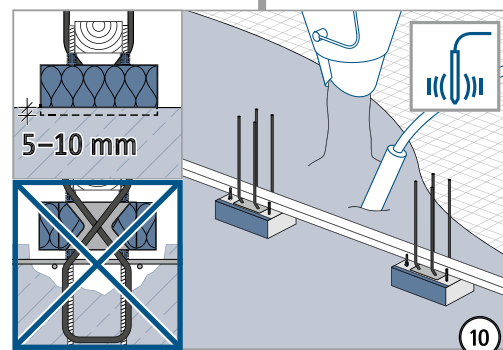
Einbauanleitung Wandfuß



Ab Unterkante Dämmkörper
Sconnex® Typ W ist ein 2.
Betonierabschnitt von $a =$
100–600 mm vorzusehen.



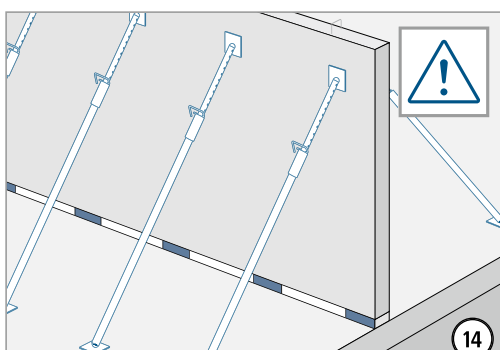
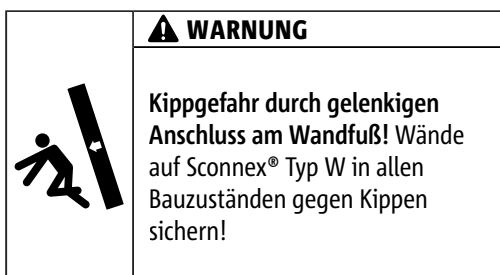
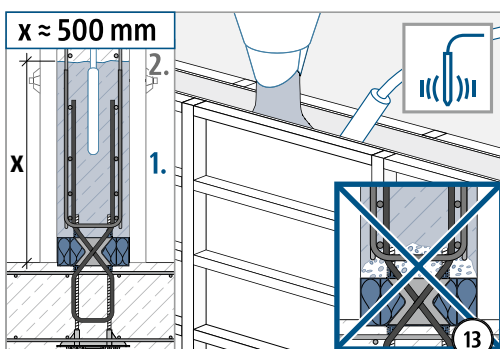
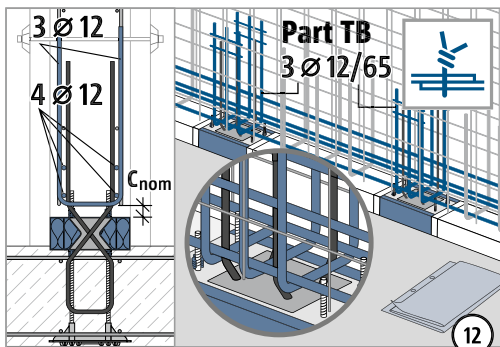
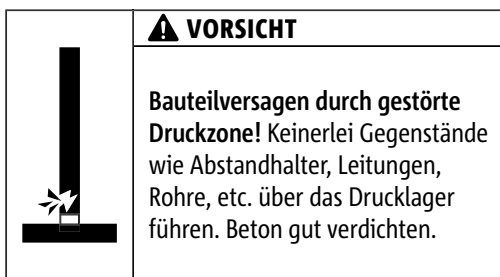
Zwischen 1. und 2.
Betonierabschnitt ist eine
Erstarrungszeit von mindestens
45–75 Minuten einzuhalten.



Typ W

Stahlbeton – Stahlbeton

Einbauanleitung Wandfuß



Typ W

Stahlbeton – Stahlbeton