

# Certificate

## Certified Passive House component

for cool, temperate climate, valid until 31.12.2024

Category: **Facade anchor**  
 Manufacturer: **Schöck Bauteile GmbH**  
**76534 Baden-Baden, GERMANY**  
 Product name: **Schöck Isolink® type C**

The following criteria were used in awarding this certificate:

### Efficiency Criterion

In two typical applications\*, the construction fulfills the requirements of

$$\Delta U_{WB} \leq 0.010 \text{ W}/(\text{m}^2\text{K})$$

### Comfort Criterion

The inner surface must be warm enough to prevent mould as well as uncomfortable down-drafts and radiation losses.

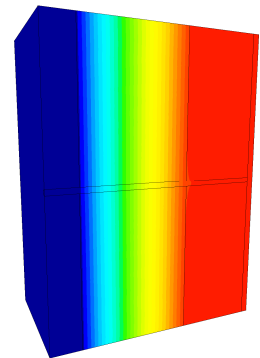
$$\theta_{i,\min} \geq 17^\circ\text{C}$$

### Thermal data of the certified component

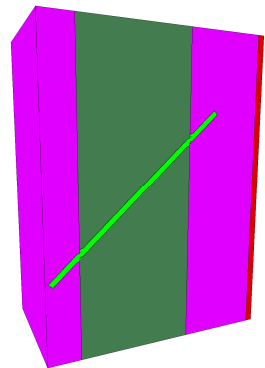
Schöck Isolink® type C	thermal bridge coefficient	minimum inner surface temperature
	$\chi$ [W/K]	$\theta_{i,\min}$ [°C]
C-OH and C-EH	0.0004	19.47
C-OD and C-ED	0.0003	19.47
C-SH	0.0004	19.47
C-SD	0.0003	19.47

Validation reference buildings	Row House	School building
$\Delta U$ [W/m²K]	0.0037	0.0053

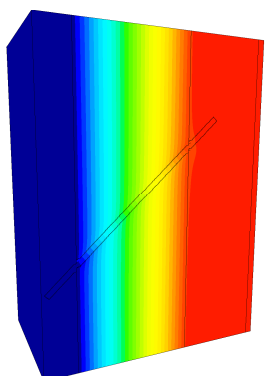
\*The criteria have been validated at two representative buildings, a row house and a school building.



Isothermal map of the horizontal rod



Material representation of the diagonal rod



Isothermal map of the diagonal rod

cool, temperate climate



**CERTIFIED COMPONENT**

Passive House Institute