



The perfect edge for concrete elements.

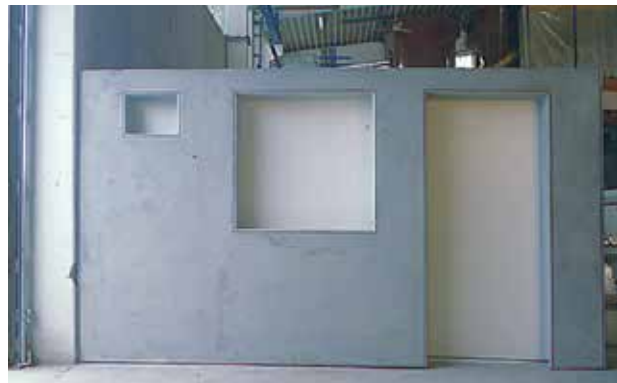
The Schöck ASE prefinished formwork for balconies and wall openings.

Convincing quality.

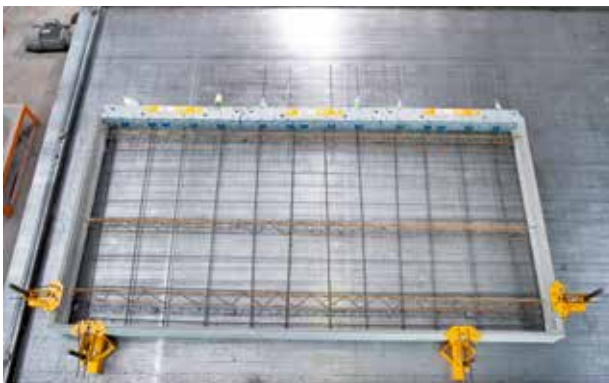
Stable and sustainable.



Conventional wood formwork



Wall openings with Schöck ASE prefinished formwork



Complete balcony formwork with shuttering elements and Schöck Isokorb® thermal break connector



Paintable surface, without any additional finishing work

Advantages from the construction site

- ▶ Optimal concrete finish with a paintable surface from first installation
- ▶ No additional concrete fill required
- ▶ Maximizing the prefabrication of the concrete element
- ▶ Improved access on site

All openings are accessible without obstacles during the construction phase. The high degree of prefabrication and simple assembly on the construction site provides added value for everyone involved.

The Schöck ASE prefinished formwork replace conventional formwork made of wood or polystyrene and offer a consistent, high-quality finish for all openings in a concrete wall and slab edges. The inside profile ensures a stable connection with the poured concrete. Whether balcony, interior wall or stairways, with Schöck ASE every concrete element results in a perfect finish.

The product family



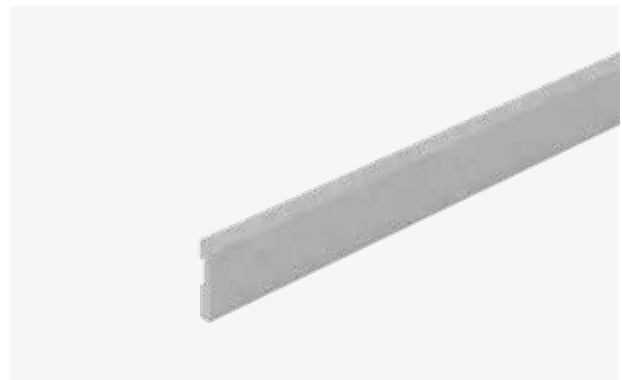
Schöck ASE type DW1 for balconies with a molded drip edge and a plastic strip for optimal sealing on fresh concrete. The sealing strips ensure an excellent finish even in suboptimal pouring conditions. The butt and corner connectors guarantee a clean angles of the formwork pieces.



Schöck ASE type DW2 with two sealing strips for the optimal sealing effect on fresh concrete. The type DW2 is used for the edge of double walls. The sealing strips are used to cleanly form the fresh concrete, especially when changing hoppers in filling the formwork.



Schöck ASE type DW0 without sealing strips for edges such as stair risers, windows and doors openings, as well as floor-to-ceiling wall edges. The inside profile ensures optimal grip with the fresh concrete.



Schöck ASE type P for stair landings and stair risers as well as ceiling elements. In the case of ceilings, the steel formwork can often be too short, needing extension with wood or polystyrene. This cutting creates waste, and disposal of hazardous materials costs a lot of time and disposal costs. Schöck ASE Type P is also suitable for solid walls.

Efficient production.

Adding value for you and your customers.

The assembly



1. Schöck ASE with seal positioned on the form table



2. Connect corners and fix to the table



3. Place reinforcement and pour concrete



4. Remove the sealing strip after the element is lifted

The advantages at the precast plant

- ▶ Saving time-consuming, cost-intensive makeshift formwork, as well reducing waste from their disposal.
- ▶ Easy positioning of the elements on the form table enabling quick assembly.
- ▶ The sealing strips prevent wet concrete spillage even on uneven form tables, allowing a clean transition to fresh concrete.
- ▶ High quality finished products are a real added value for you and your customers right from the start.

Technical details are subject to change
Issued: February 2020

Schöck Bauteile GmbH
Vimbucher Strasse 2
76534 Baden-Baden, Germany
Telephone: +49 7223 967-144
Fax: +49 7223 967-7634
export@schoeck.com
www.schoeck.com

