



Innovation for energy-efficient precast walls.
Schöck ComBAR® Thermo-Anchor.



The awarded Schöck ComBAR® Thermo-Anchor. Economical and easy to install.



Twin wall with Schöck ComBAR® Thermo-Anchor



Sandwich wall with Schöck ComBAR® Thermo-Anchor

The more economical solution for precast producers

Faster installation

Schöck ComBAR® Thermo-Anchors can simply be inserted into the pre-drilled insulation. No need for time consuming filling of insulating material between conventionally used connectors (lattice girders, truss etc.).

Reduction in labour and materials

The Schöck ComBAR® Thermo-Anchor is a combined spacer and tension rod. Schöck provides cost-effective, feasible solutions for different wall structures with reduced quantity of connectors per m² compared with other systems.

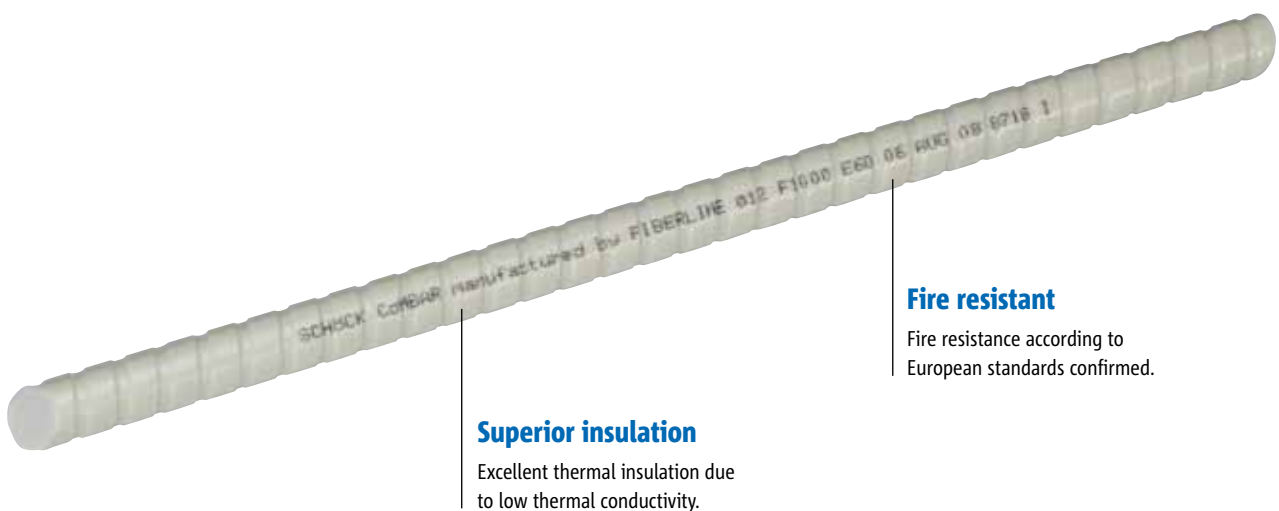
Efficient delivery and storage

Order quantities can vary to suit, allowing for efficient delivery and storage.

More flexibility in production

- Large panels of up to 6x12m can be manufactured easily, as standard.
- Any type of insulation can be used, including mineral wool.
- Various thicknesses possible (no limit on insulation thickness).
- Additional reinforcement layers can easily be added within outer and inner leaves.
- Schöck will provide ongoing training and advice.
- System can incorporate air cavity.

The use of steel as concrete reinforcement has been tried and tested for decades. But there are still applications where alternatives are called for. This is where Schöck ComBAR® comes in. Schöck ComBAR® is a glass fibre reinforcing bar, offering unique benefits in comparison to steel. Schöck ComBAR® has a very high tensile strength, is extremely durable and corrosion resistant and has a low thermal conductivity. Schöck ComBAR® Thermo-Anchors offer precast manufacturers and designers a construction material which is a cost-effective alternative to conventional anchoring solutions for twin walls and sandwich walls.



Innovation awards:



A patented product of research and development:



German federal
environmental foundation



Certified by DIBt, Germany

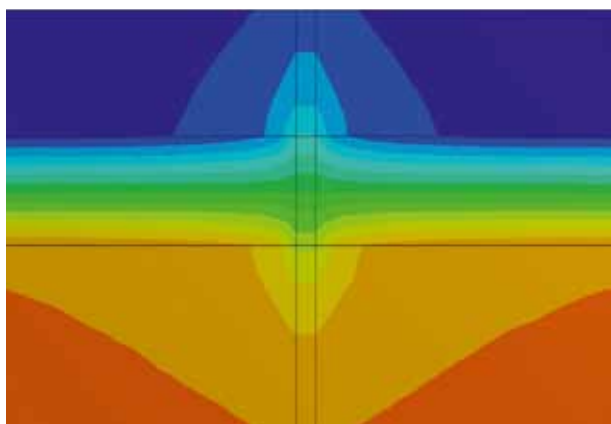


University of Kaiserslautern,
Germany

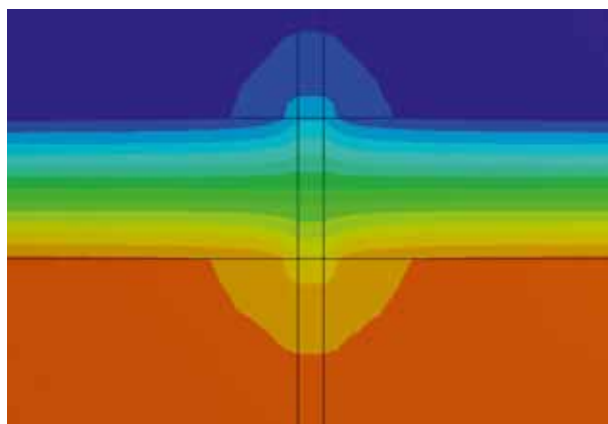
Improved thermal performance.

Thermal bridges compared.

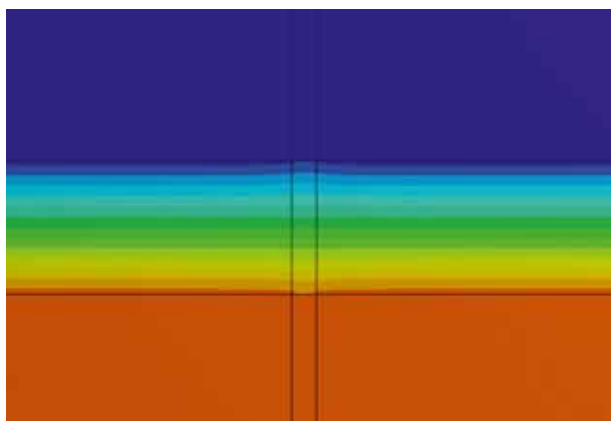
Right from the planning stage, the Schöck ComBAR® Thermo-Anchor provides a connection between the outer and inner leaf of twin and sandwich walls with almost no thermal bridging. This significantly improves the U value of the finished wall.



Steel anchor $\lambda = 60 \text{ W/(m}\cdot\text{K)}$



Stainless steel anchor $\lambda = 15 - 17 \text{ W/(m}\cdot\text{K)}$



Schöck ComBAR® Thermo-Anchor $\lambda = 0,5 \text{ W/(m}\cdot\text{K)}$

Achievable U values for internally insulated walls with the Schöck ComBAR® Thermo-Anchor.

Insulation	Wall thickness W/(m²K)			
mm	300 mm	360 mm	400 mm	500 mm
80	0.393	0.389	0.387	-
100	0.321	0.319	0.318	-
140	-	0.235	0.234	-
160	-	0.207	0.207	0.205
200	-	-	0.168	0.167
300	-	-	-	0.113

λ_{a} of the insulation = $0.035 \text{ W/(m}\cdot\text{K)}$

Comprehensive services. For enhanced efficiency in installation.

Our service for you

From initial design to completion, Schöck will assist you in the implementation of the Schöck ComBAR® Thermo-Anchor. We will support you in the technical development of your projects by means of design

and CAD software. Furthermore, qualified Schöck employees provide installation assistance. We also supply the tools that simplify installation and production.

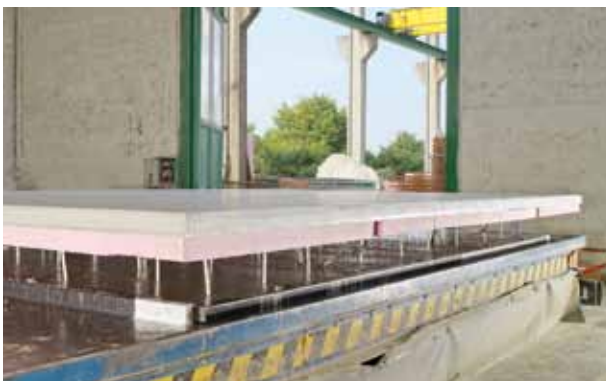
Installation overview



1. Cover the freshly cast concrete outer leaf with thermal insulation



2. Insert the Thermo-Anchors into holes drilled into the thermal insulation



3. Position the outer leaf on the inner leaf



4. Erect wall construction on-site

HauCon Norge AS
Snarøyveien 67
Hangar 2
Koksa
1367 Snarøya
Tel: 67 11 56 90
Fax: 67 11 56 91
post@haucon.no

Distributed by
HAUCon®

 **Schöck**
Innovative Building Solutions