

Press Release



Schock USA, Inc.
500 Fifth Avenue, 4810
New York, NY 10110
Tel.: 855 572 4625
E-mail: press@schock-us.com

Schöck Releases the Expert's Design Guide to Prevent Thermal Bridging

NEW YORK, NY and TORONTO, ONTARIO--JUNE 26, 2014 – Schöck the leading International producer of structural thermal breaks announces the release of the Design Guide, a comprehensive resource for designers on the method for calculating the impact of structural thermal bridges in buildings constructed of concrete and steel, and the effective solutions of mitigating the thermal bridging effect.

Created specifically to provide designers with an enhanced understanding of the thermal bridging, the Design Guide begins with an introduction to thermal bridging, explaining how heat moves through building assemblies, what effects are made to the surface temperatures and condensation control of building assemblies, and what variable are important to measure.

Further to understanding, the Design Guide walks though the methods of calculating the impact of thermal bridges on 1) the heat flows, 2) temperatures and 3) moisture performance of building enclosures. Best practice examples present how the impact of thermal bridges can be mitigated during design, both in general and using Schöck Isokorb® thermal breaks.

Procedures and examples to evaluate the energy benefit using whole building energy modeling and how best to integrate solutions for performance and code compliance are presented in the Design Guide.

“With the rapid increase of thermal performance requirements in building codes, we aim to educate the market and prepare designers from our expertise in building science. Our goal was to create a tool which designers can use to further understand how to calculate the impact of thermal bridges and ultimately how to avoid thermal bridging while meeting code compliance.”
- Adam Kimble, Head of North America, Schöck USA Inc.

The Design Guide was created in collaboration with leading engineering firm, Morrison Hershfield Limited, and draws from the methods and results of

thermal modeling carried out under and ASHRAE sponsored research project, ASHRAE 1365 RP Thermal Performance of Building Envelope Details for Mid and High Rise Buildings.

A copy of the Design Guide can be obtained from a Schöck member or from the Thermal Bridging Solution Center, due to release online by mid-July 2014.

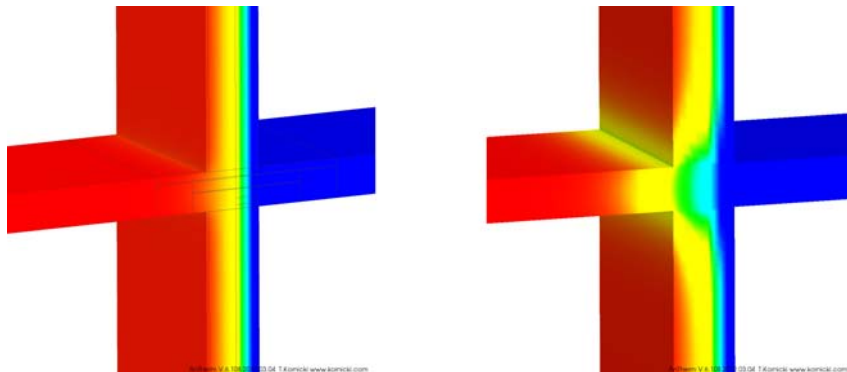
Schöck is proud of its reputation for customer service and innovative thermal break products installed in The Tower at PNC Plaza, Kimbell Art Museum, Fulton Street Transit Center, 2012 Olympics Village and Aquatic Centre, and Umass Life Science Laboratory.

For more information on Schöck's products and services, visit www.schock-us.com or contact us at 855-572-4625.

approx. 2,650 characters (with spaces)

Photographs

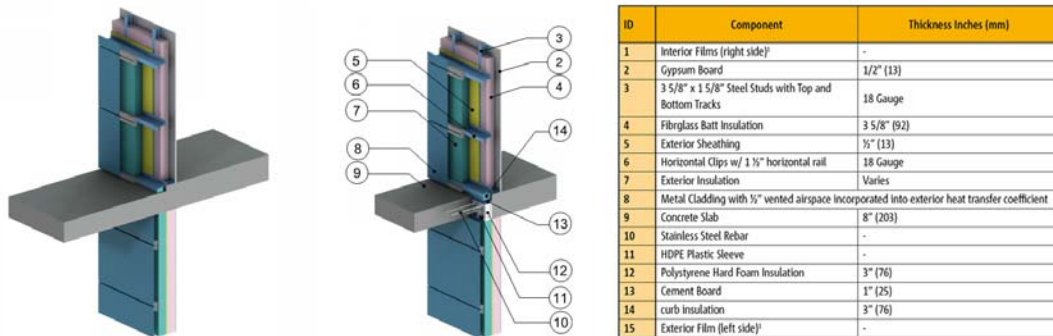
[Continuous balcony slab versus a solution with Schöck Isokorb®.jpg]



Continuous balcony slab without thermal break (left) and balcony slab thermally broken with Schöck Isokorb® (right) providing a continuous insulation layer. The thermographic illustration shows a reinforced concrete balcony with and without a thermal break provided by a 3D thermal analyses. The image on the left shows an undisturbed thermal bridge. The color gradient shows how the heat flows to the outside through the balcony slab, from the warm red to the cold blue area. The image on the right depicts a thermally broken balcony connection. As the illustration shows, a load-bearing thermal insulation element significantly reduces heat loss and provides continuity in the insulation layer.

Photo courtesy of: Schöck USA Inc.

[curb insulation, without and with Schöck Isokorb.jpg]



Thermal model for the balcony intersection with exterior and interior insulated steel stud assembly, without and with Schöck Isokorb thermal break.

Photo courtesy of: Schöck USA Inc.

About Schöck USA Inc.

Schöck USA Inc., located in New York, NY offers the product for thermal insulation of cantilevered components such as balconies or canopies of the building - the Schöck Isokorb.

The Schöck Isokorb reduces thermal bridges between foreign and internal component to a minimum. The risk of condensation formation and consequent structural damage and possible mold growth is prevented. The Schöck Isokorb can be used in both Institutional Buildings and High Rise Residentials. The product lines of Schöck Isokorb Type CM and S allow the thermal insulation of concrete and steel connections and offer maximum design freedom. At the same time the products ensure structural integrity.

Schöck USA Inc. is a subsidiary of the German Schöck Group. As a leading specialist in this segment Schöck develops and produces innovative products for structural applications with additional structural-physical benefits. The focus concentrates on innovative solutions to avoid thermal bridges and impact noise in buildings. Besides product solutions Schöck emphasize on advice and support prior, during and after installation of the products. Schöck provides high-quality, easy-to-install products with the highest level of technical support and customer service.

Media Inquiries:

Schöck

Rosa Demirlikaya
 Telephone: +49 7223 967 410
 E-mail: press@schock-us.com
www.schock-us.com

Angie Tennyson
 Telephone: +1 855 572 4625
 E-mail: press@schock-us.com