

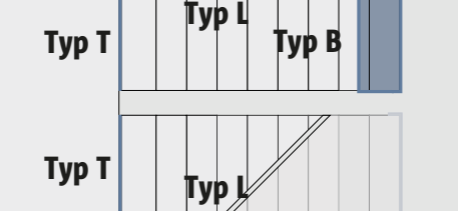
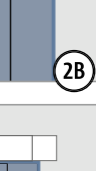
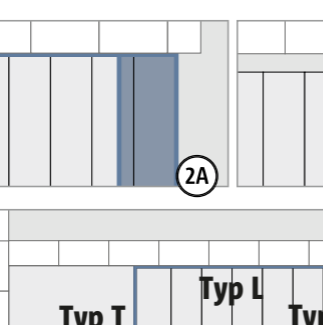


# SCHÖCK

## Tronsole® Typ B

### Einbauanleitung – Ort beton

#### Typ B



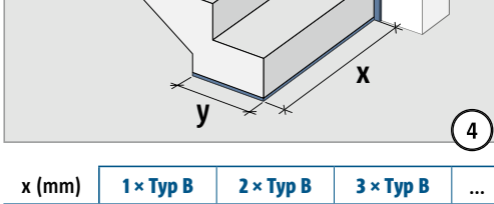
1



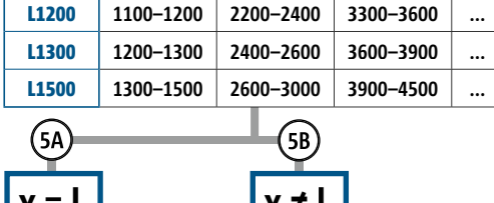
2A



2B



3



4

| x (mm) | 1 × Typ B | 2 × Typ B | 3 × Typ B | ... |
|--------|-----------|-----------|-----------|-----|
| L900   | 750–900   | 1500–1800 | 2250–2700 | ... |
| L1000  | 900–1000  | 1800–2000 | 2700–3000 | ... |
| L1100  | 1000–1100 | 2000–2200 | 3000–3300 | ... |
| L1200  | 1100–1200 | 2200–2400 | 3300–3600 | ... |
| L1300  | 1200–1300 | 2400–2600 | 3600–3900 | ... |
| L1500  | 1300–1500 | 2600–3000 | 3900–4500 | ... |

5A

**x = L**  
**y = B**

5B

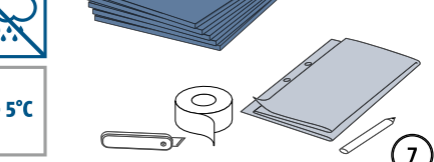
**x ≠ L**



L900: a = max. 75 mm  
L1000–L1300: a = max. 50 mm  
L1500: a = max. 100 mm

5A

**y < B**

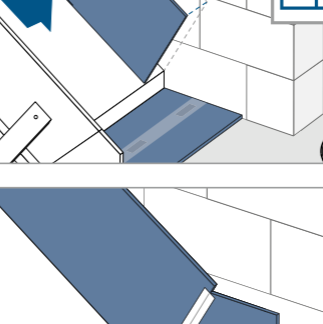
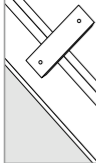


5A

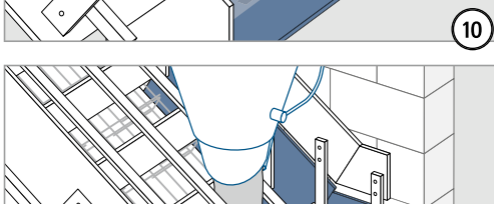


6

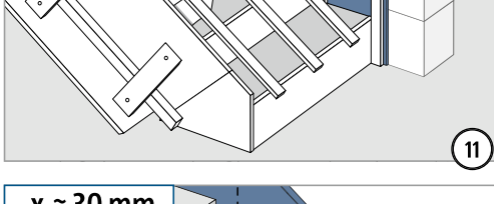
#### Typ L



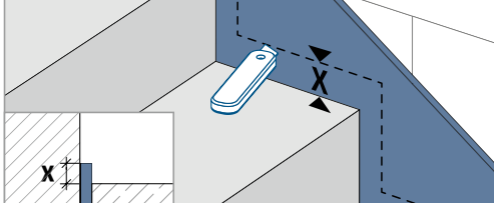
7



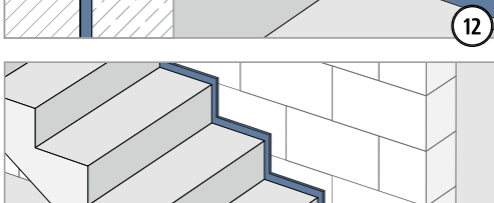
8



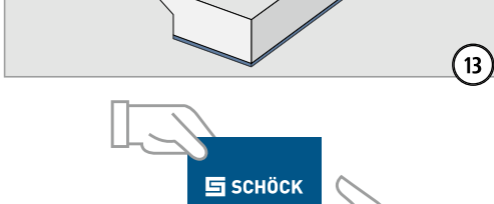
9



10



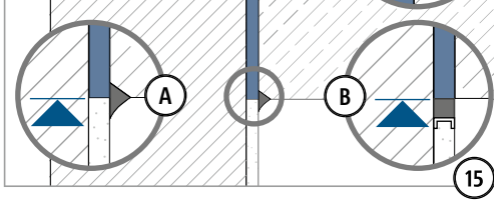
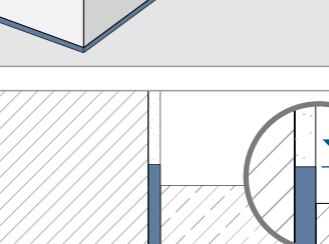
11



12



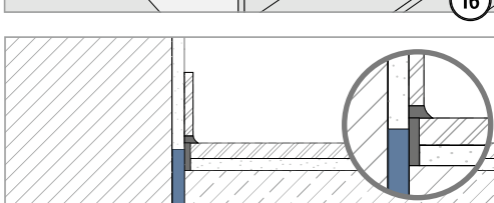
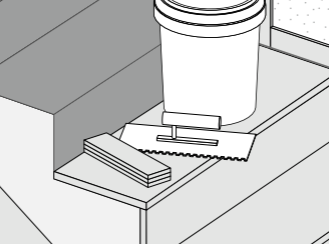
13



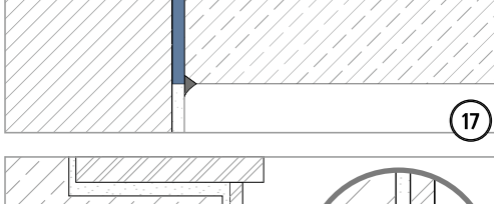
14



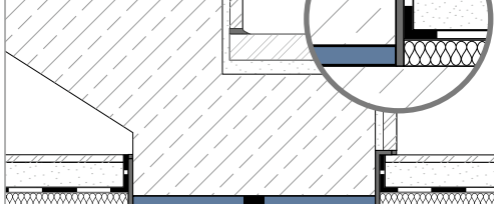
15



16



17



18