

Certificate

Certified Passive House component

for cool, temperate climate, valid until 31.12.2020

Category: **Facade anchor**
 Manufacturer: **Schöck Bauteile GmbH**
76534 Baden-Baden, GERMANY
 Product name: **Schöck Isolink® TA**

The following criteria were used in awarding this certificate:

Efficiency Criterion

In two typical applications*, the construction fulfills the requirements of

$$\Delta U_{WB} \leq 0.010 \text{ W/(m}^2\text{K)}$$

Comfort Criterion

The inner surface must be warm enough to prevent mould as well as uncomfortable down-draught and radiation losses.

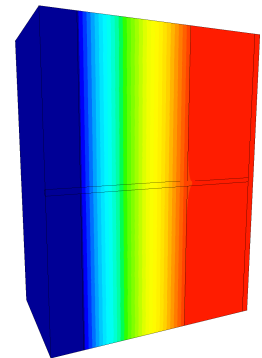
$$\theta_{i,\min} \geq 17^\circ\text{C}$$

Thermal data of the certified component

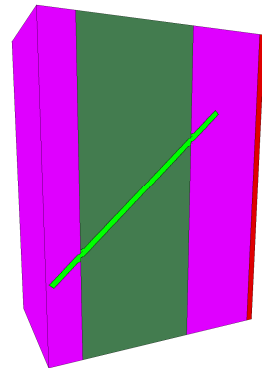
Schöck Isolink® TA	thermal bridge coefficient χ [W/K]	minimum inner surface temperature $\theta_{i,\min}$ [°C]
TA-H	0.0004	19.47
TA-D	0.0003	19.47
TA-HC	0.0004	19.47
TA-DC	0.0003	19.47

Validation reference buildings	Row House	School building
ΔU [W/m²K]	0.0037	0.0053

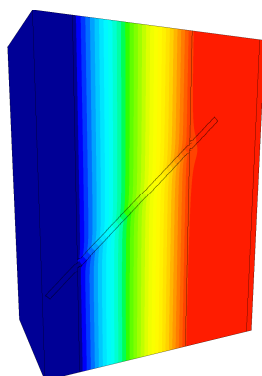
*The criteria have been validated at two representative buildings, a row house and a school building.



Isothermal map of the horizontal rod



Material representation of the diagonal rod



Isothermal map of the diagonal rod

cool, temperate climate



CERTIFIED COMPONENT

Passive House Institute