

Certificate

Certified Passive House Component

for cool, temperate climate, valid until 31.12.2019

Passive House Institute
Dr. Wolfgang Feist
64283 Darmstadt
GERMANY

Category: **Balcony connection**
Slab thickness 180 - 220 mm

Manufacturer: **Schöck Bauteile GmbH**
76534 Baden-Baden, GERMANY

Product name: **Schöck Isokorb® Typ QSXT**
Schöck Isokorb® Typ KSXT

The following criteria were used in awarding this certificate:

Efficiency Criterion

In two typical applications*, the construction fulfills the requirement of

$$\Delta U_{WB} \leq 0.010 \text{ W/(m}^2\text{K)}$$

Comfort Criterion

The inner surface must be warm enough to prevent mould as well as uncomfortable down-draught and radiation losses.

$$\theta_{i,\min} \geq 17^\circ\text{C}$$

Following heat transmission coefficients χ [W/K] and surface temperatures $\theta_{i,\min}$ [°C] have been validated:

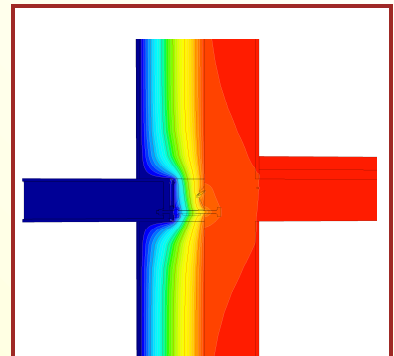
Product	Slab thickness [mm]	χ [W/K]	$\theta_{i,\min}$ [°C]
QSXT8	180	0.062	19.09
QSXT8	220	0.064	19.05
QSXT10	180	0.068	19.04
QSXT10	220	0.069	19.02
QSXT12	180	0.072	19.01
QSXT12	220	0.075	18.99
KSXT14-V8	180	0.085	19.01
KSXT14-V8	220	0.089	18.96

* The criterion was validated on both, a row house and a apartment dwelling.

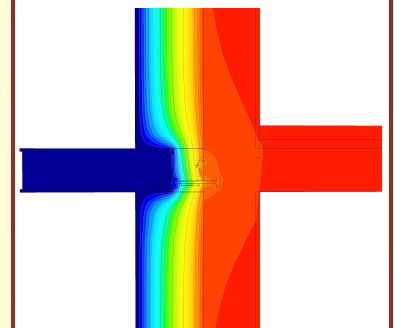
(according to criteria "balcony connection" v2.1.1)

The certificate includes types with minor statical performance.

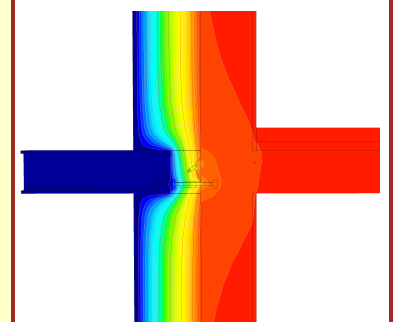
Thermal bridge coefficients can be approximated by linear interpolation.



Isothermal map of the QSXT8 - H180



Isothermal map of the QSXT10 - H180



Isothermal map of the QSXT12 - H180

