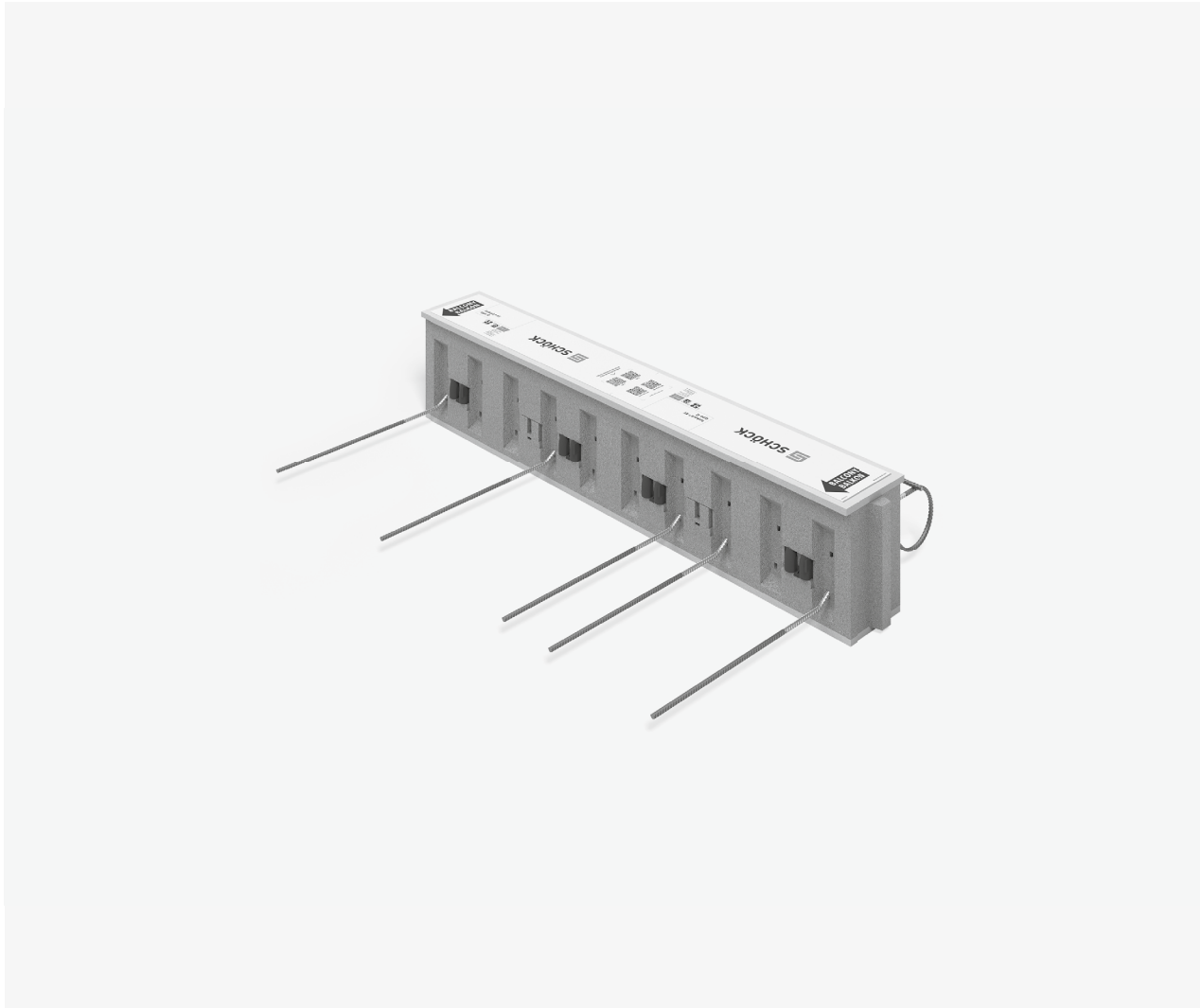


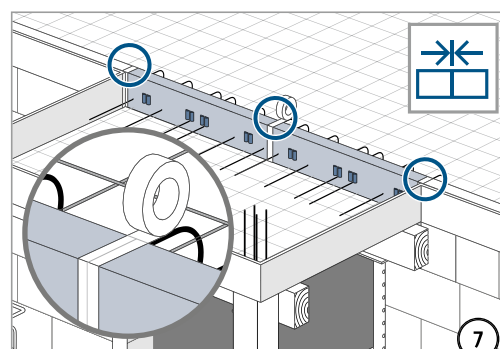
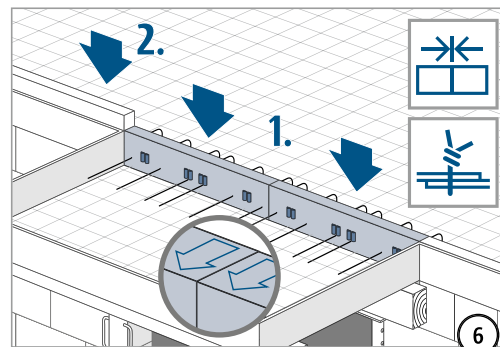
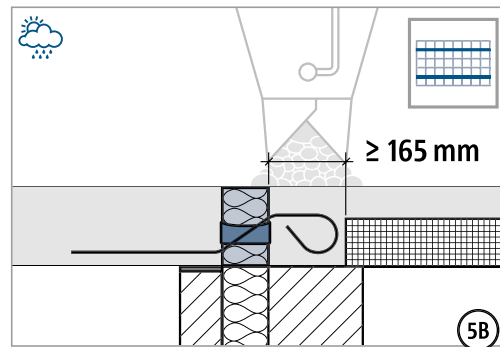
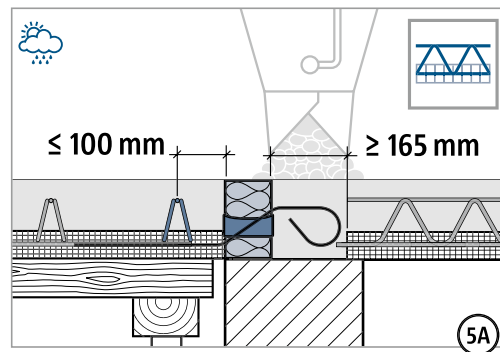
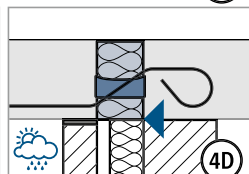
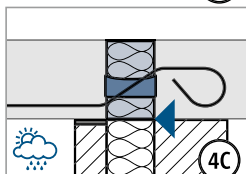
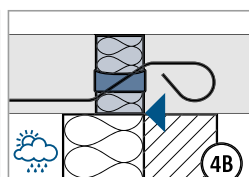
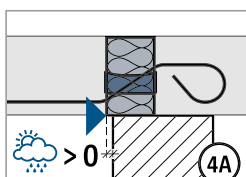
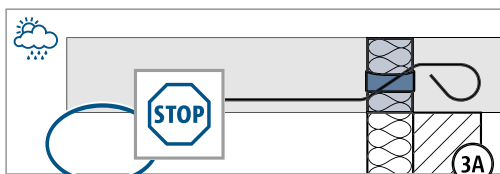
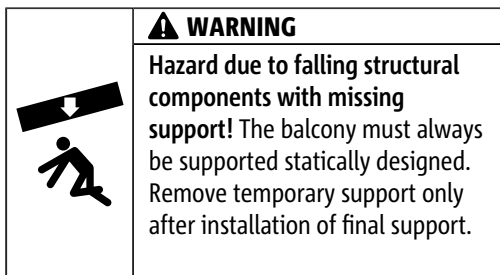
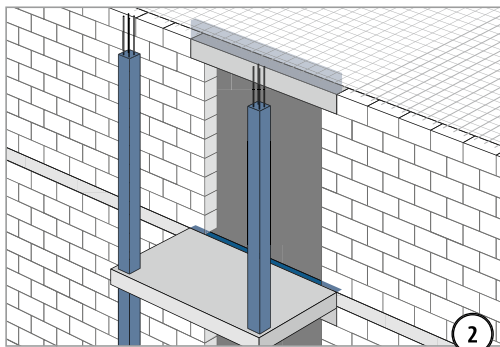
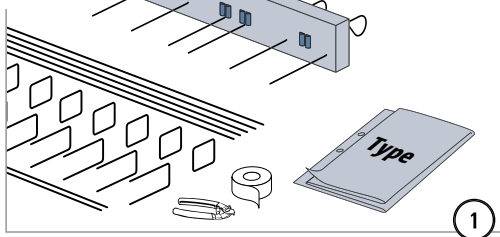
## Schöck Isokorb® XT/T type Q

XT/T  
type QReinforced concrete – reinforced  
concrete

## Installation instructions

### Type Q (V1-V4)

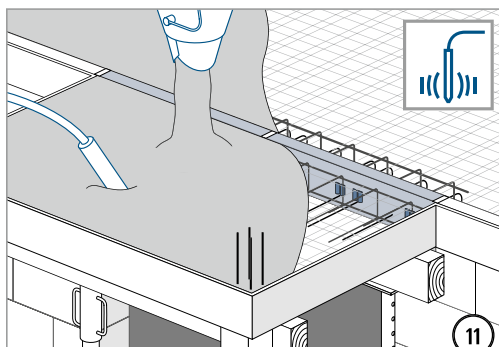
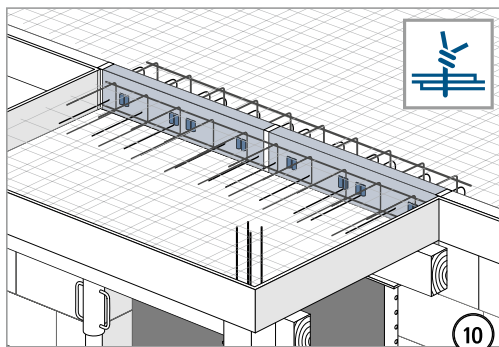
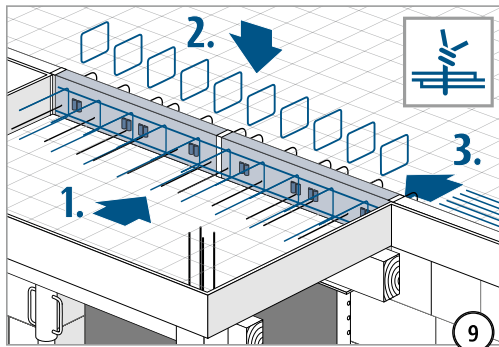
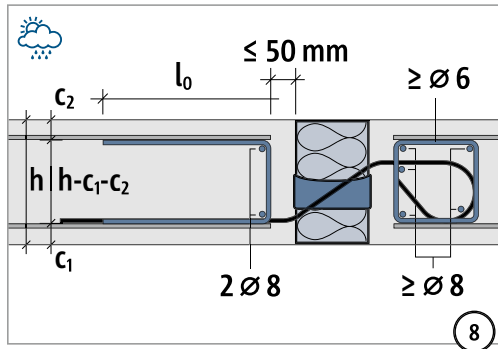
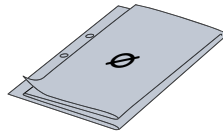
Type ✓



XT/T  
type Q

Reinforced concrete – reinforced  
concrete

## Installation instructions



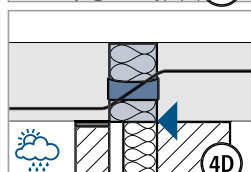
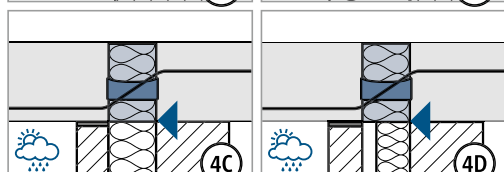
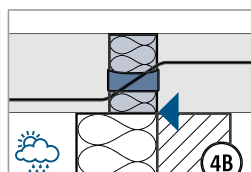
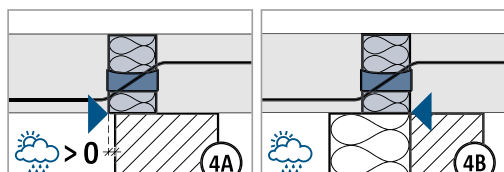
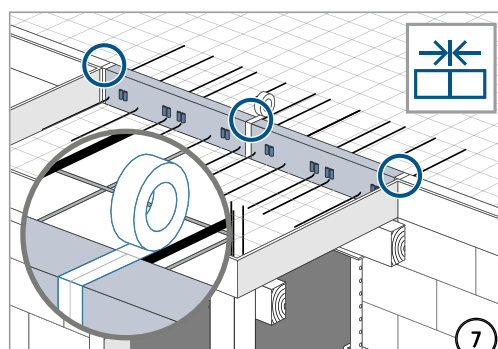
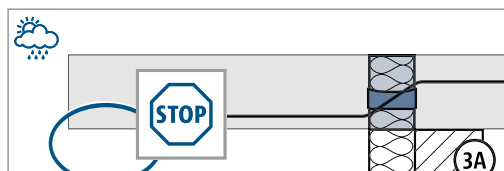
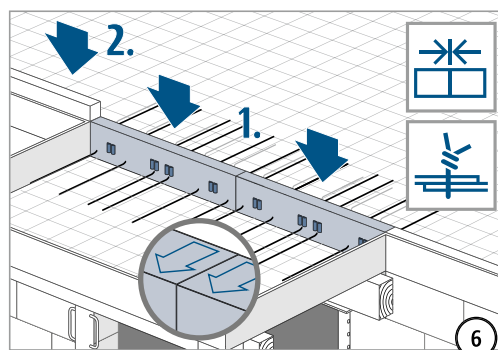
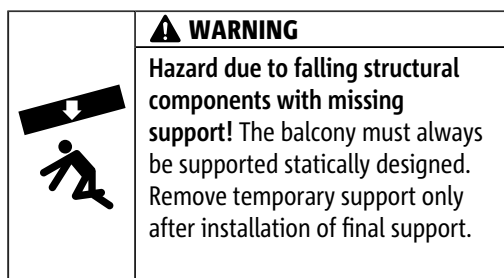
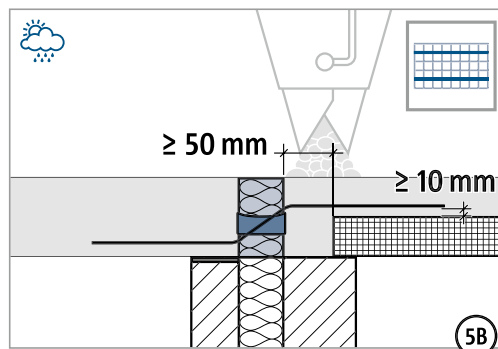
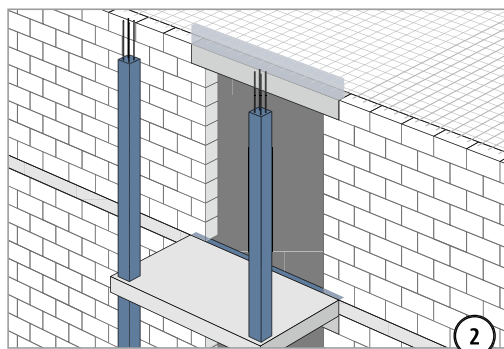
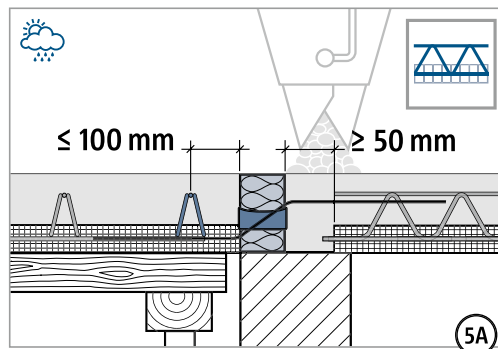
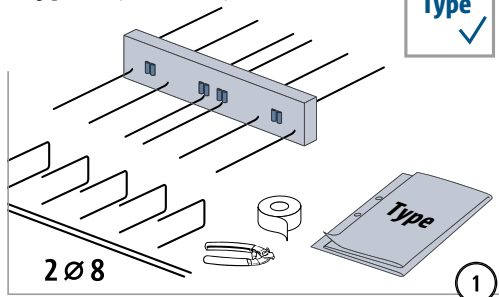
XT/T  
type Q

Reinforced concrete – reinforced  
concrete

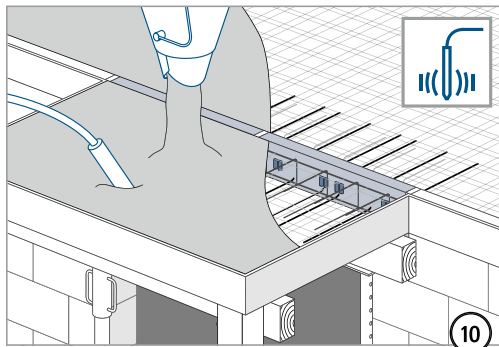
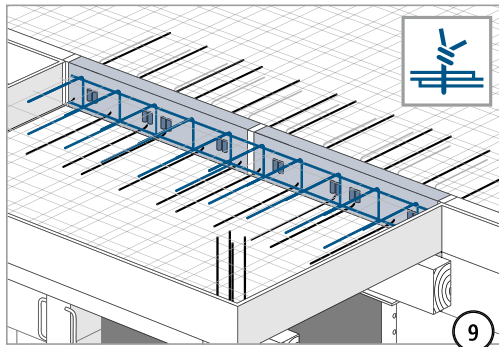
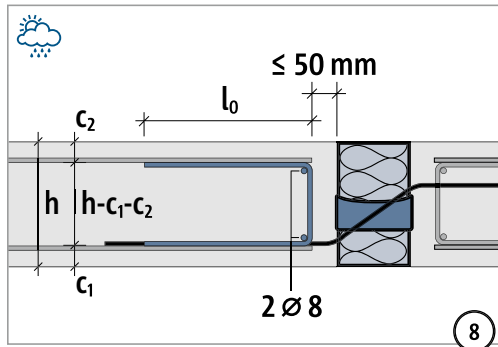
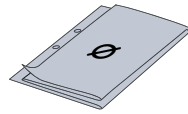
## Installation instructions

### Type Q (V5–V12)

Type ✓



## Installation instructions



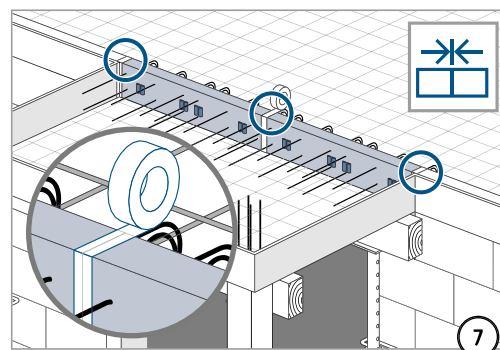
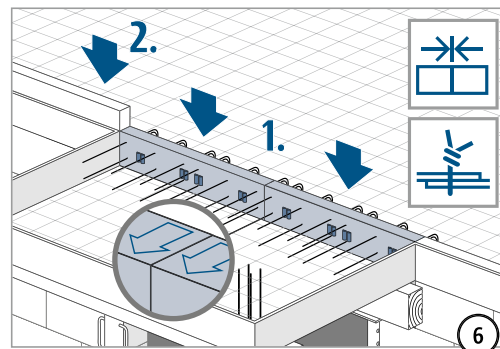
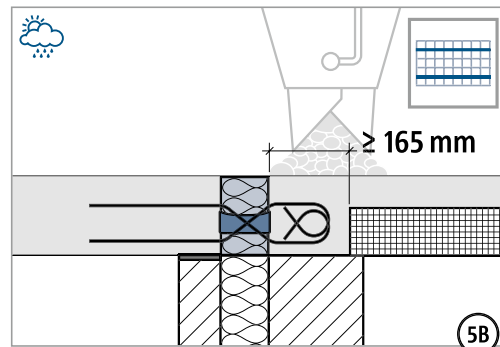
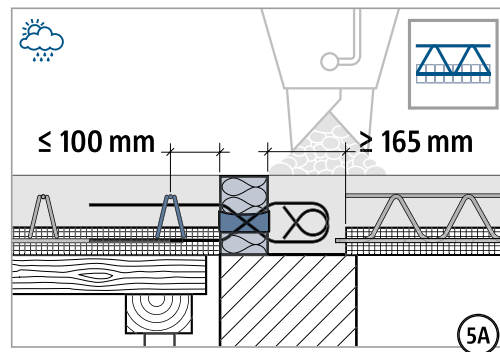
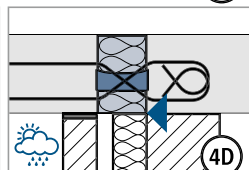
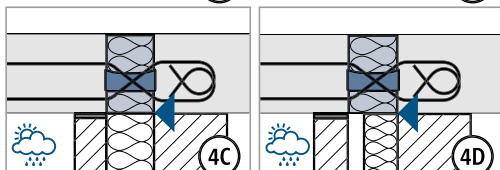
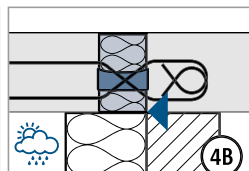
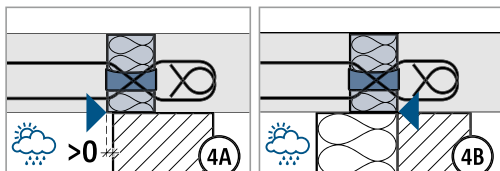
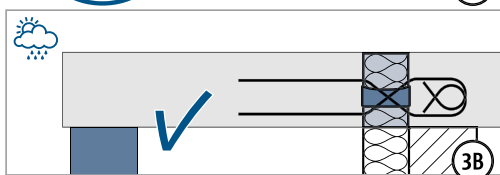
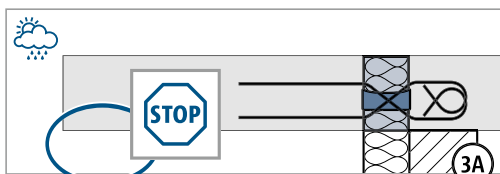
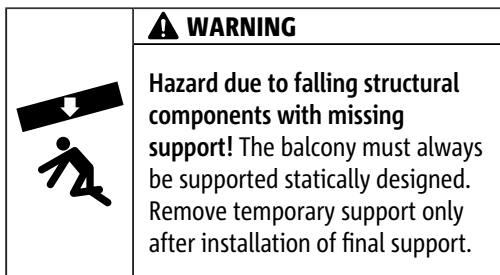
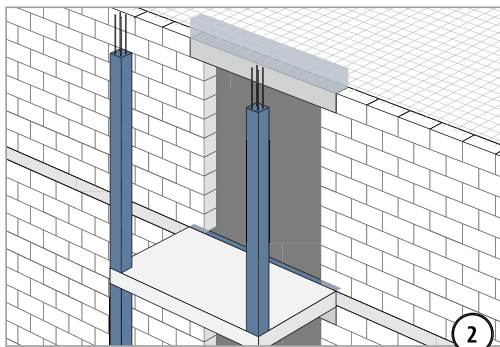
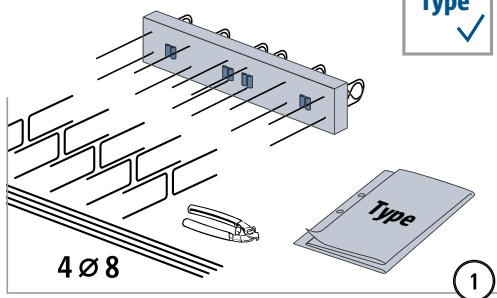
XT/T  
type Q

Reinforced concrete – reinforced  
concrete

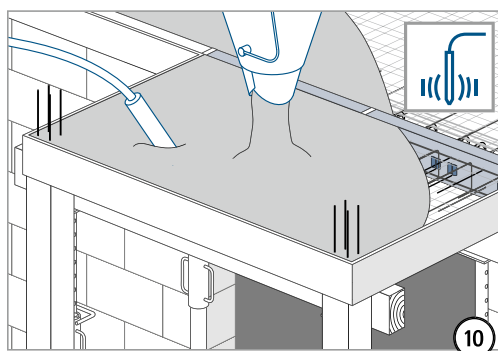
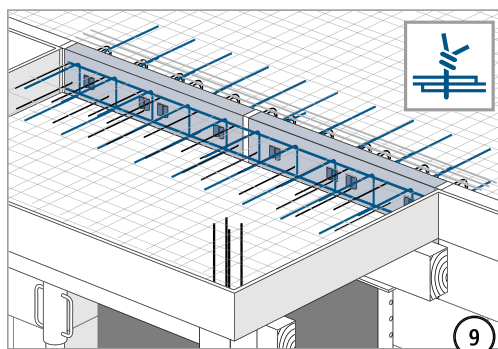
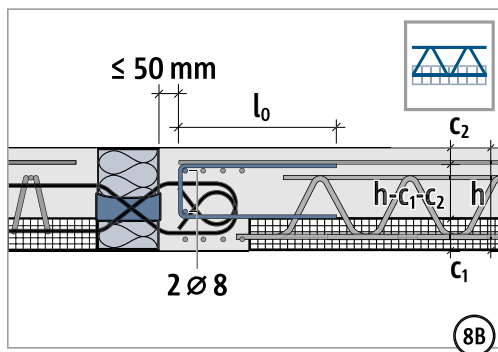
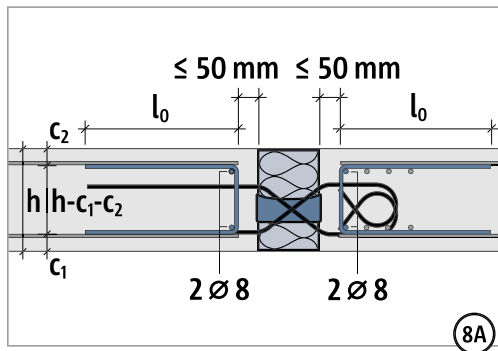
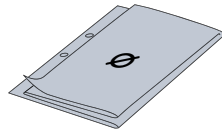
## Installation instructions

### Type Q-VV (VV1–VV4)

Type ✓



## Installation instructions



XT/T  
type Q

Reinforced concrete – reinforced  
concrete

