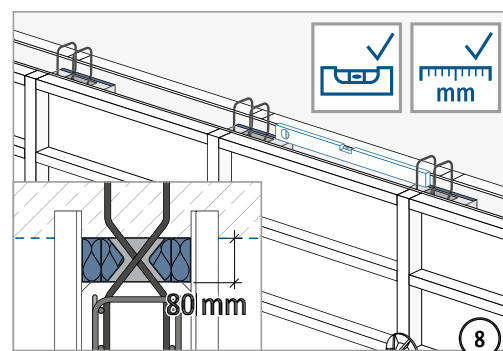
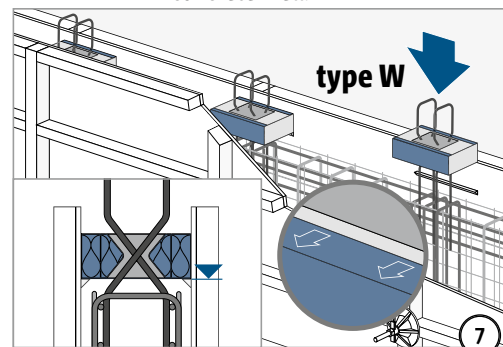
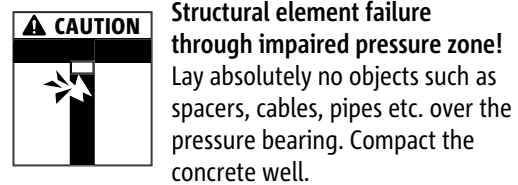
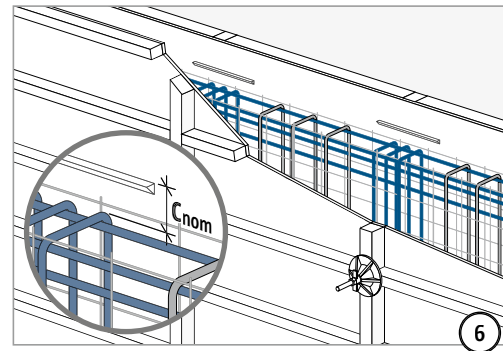
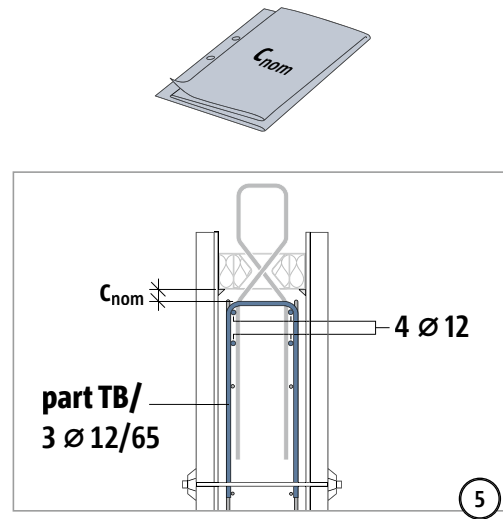
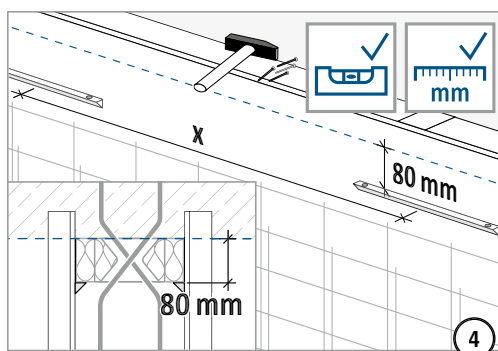
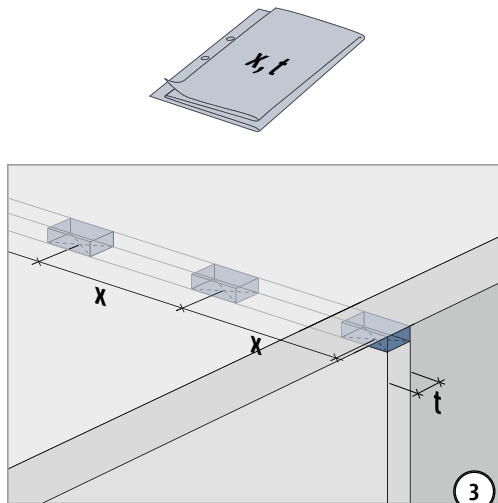
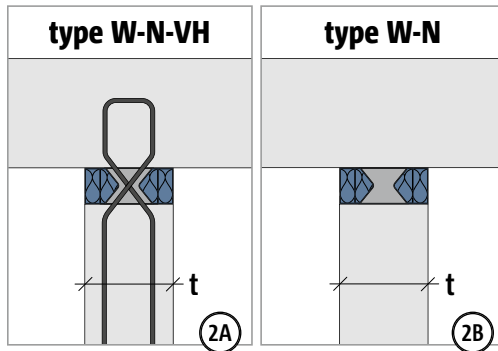
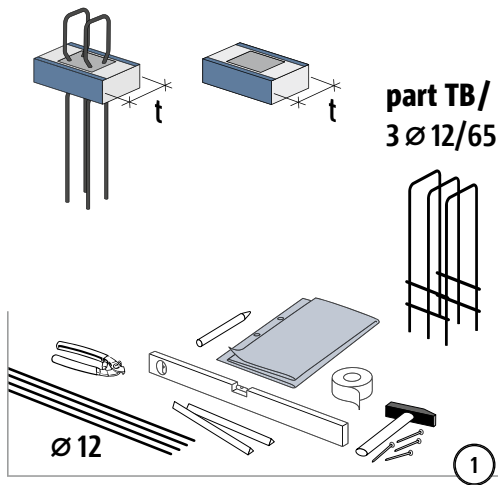


## Installation instruction top of wall

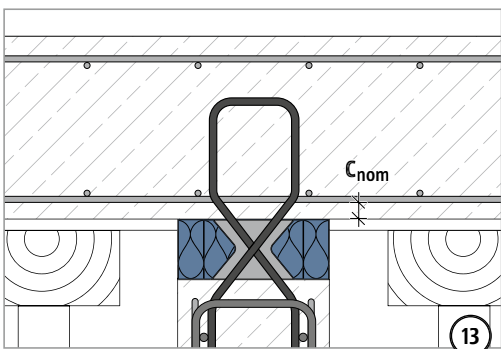
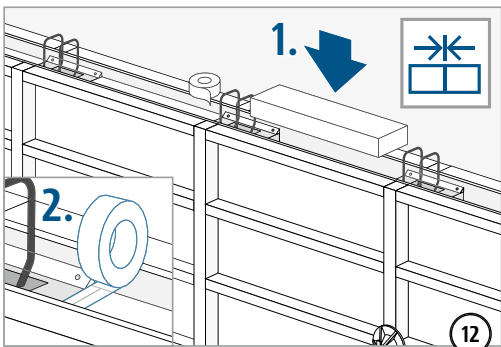
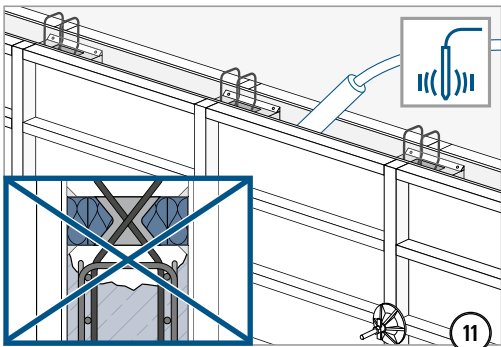
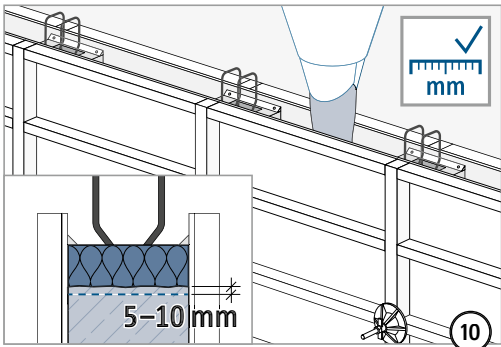
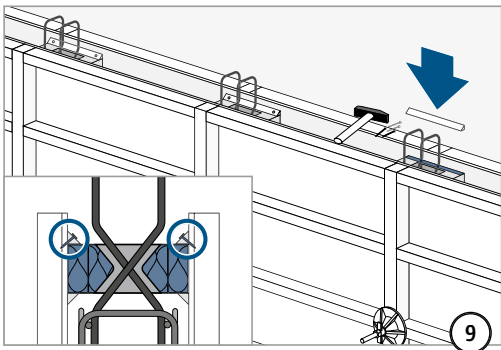
### type W-N-VH / type W-N



Type W

Reinforced concrete – reinforced concrete

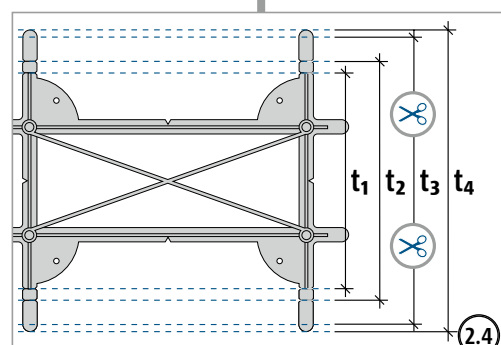
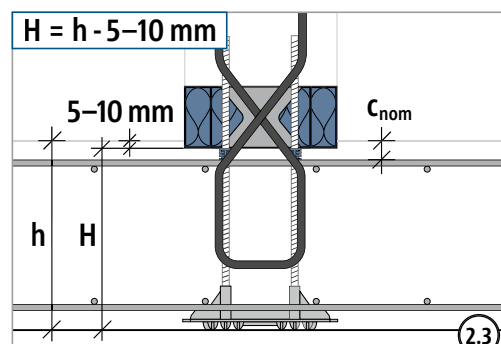
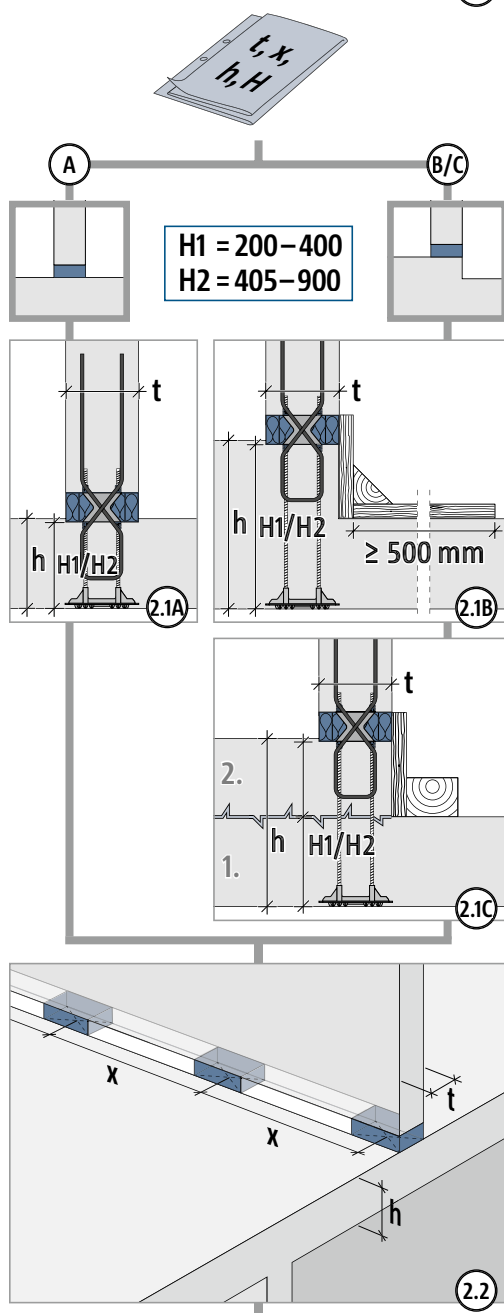
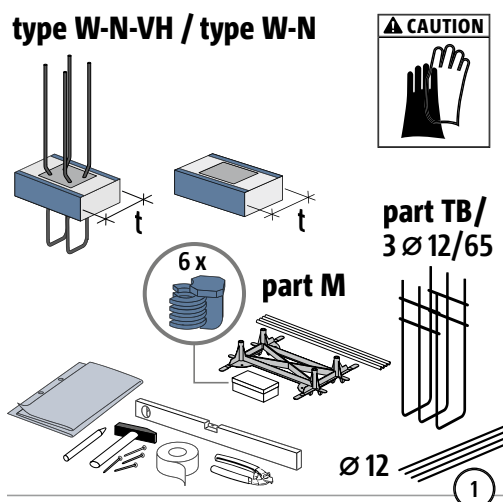
# Installation instruction top of wall



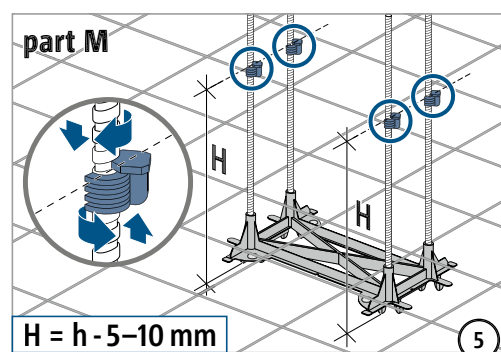
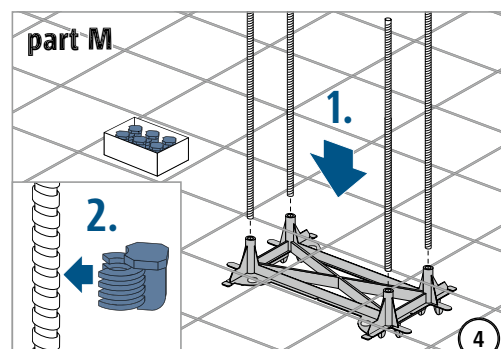
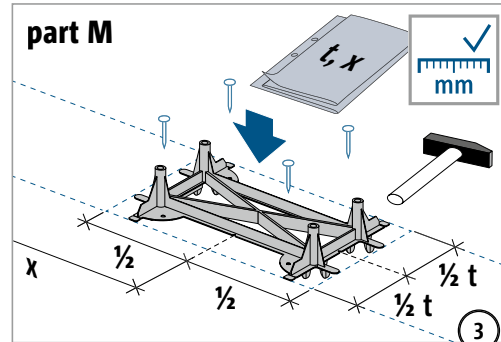
Type W

Reinforced concrete – reinforced concrete

## Installation instruction foot of wall



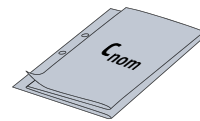
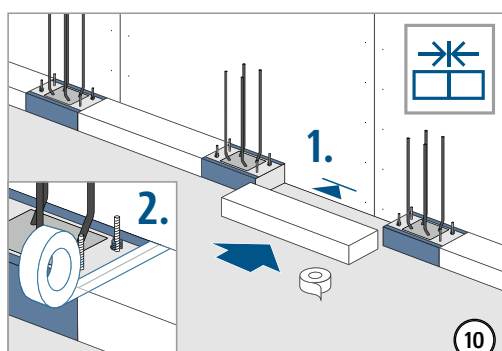
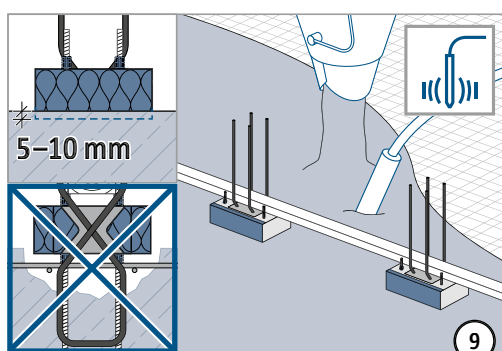
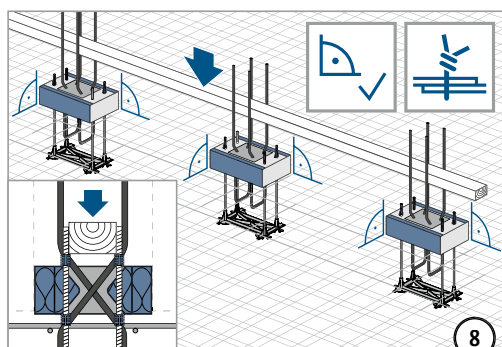
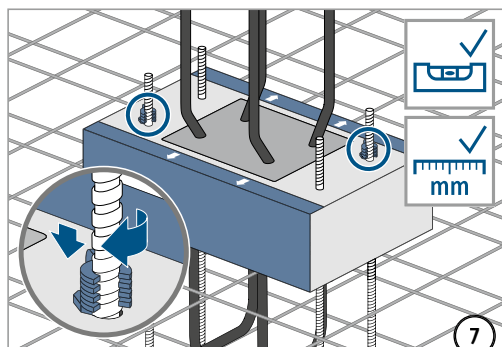
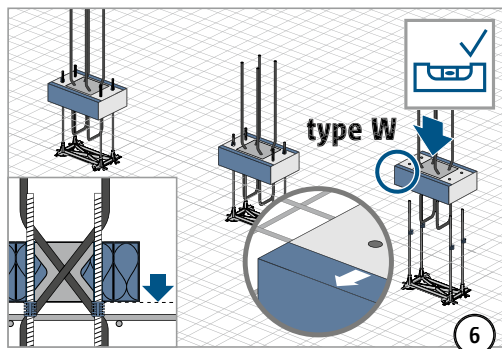
$t_1 = 180 \text{ mm}$ ,  $t_2 = 200 \text{ mm}$ ,  $t_3 = 240 \text{ mm}$ ,  $t_4 = 250 \text{ mm}$



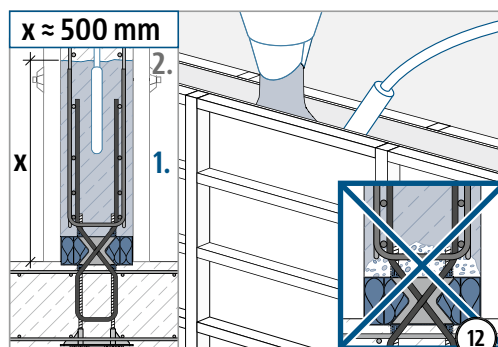
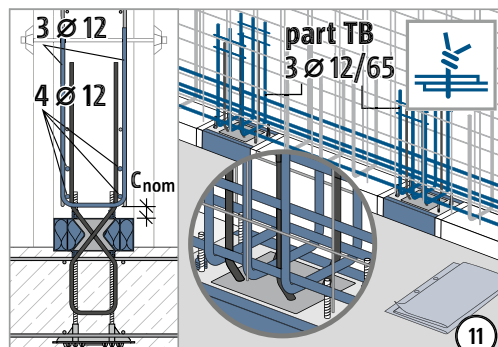
Type W

Reinforced concrete – reinforced concrete

## Installation instruction foot of wall



**Structural element failure through impaired pressure zone!**  
Lay absolutely no objects such as spacers, cables, pipes etc. over the pressure bearing. Compact the concrete well.



**Danger of tilting due to articulated connection at the bottom of the wall!** In all construction conditions secure walls on Sconnex® type W against tilting!

