


Certificate

valid until 31.12.2024

 **Passivhaus
Institut**
Rheinstraße 44/46
D-64283 Darmstadt

Balcony connection

Low Energy Component

**Schöck Isokorb®
CXT Typ K**

160 - 250 mm slab thickness

**Manufacturer: Schöck Bauteile GmbH
76534 Baden-Baden, GERMANY**

The following criteria were used in awarding this certificate:

Efficiency Criterion

In two typical applications^{*)}, the construction is

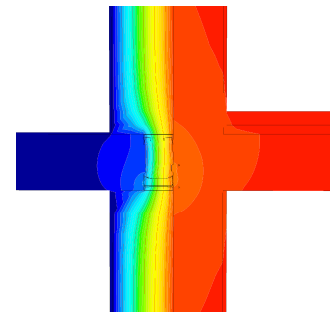
$$\Delta U_{WB} < 0.025 \quad \text{W/(m}^2\text{K)}$$

Comfort Criterion

The inner surface must be warm enough to prevent mould as well as uncomfortable down-draught and radiation losses.

$$\theta_{i,min} > 17.00 \quad ^\circ\text{C}$$

Following heat transmission coefficients ψ [W/(mK)]
have been validated:



Isothermal map of the
CXT Typ K-M10V2

Product	slab thickness [mm]			
	180	200	220	250
CXT Typ K-M8V2	-	0.150	-	-
CXT Typ K-M9V2	-	0.162	-	-
CXT Typ K-M10V2	-	0.176	-	0.181

^{*)} The criterion was validated on both, a row house and an apartment dwelling (according to criteria "balcony connection" v2.1.1). The certificate includes types with minor statical performance. The thermal bridge coefficient can be approximated by linear interpolation

