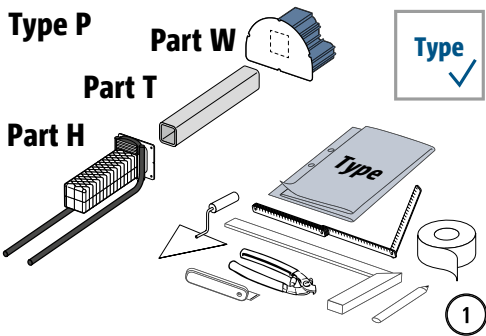



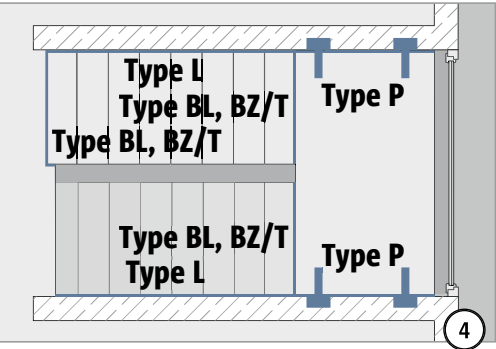
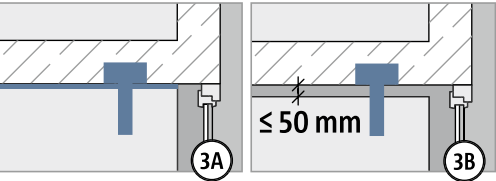
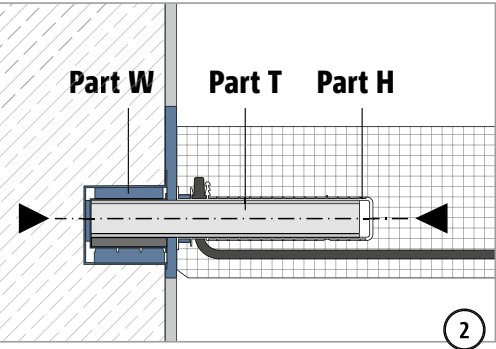
Instructions de mise en œuvre – chantier, béton coulé sur place



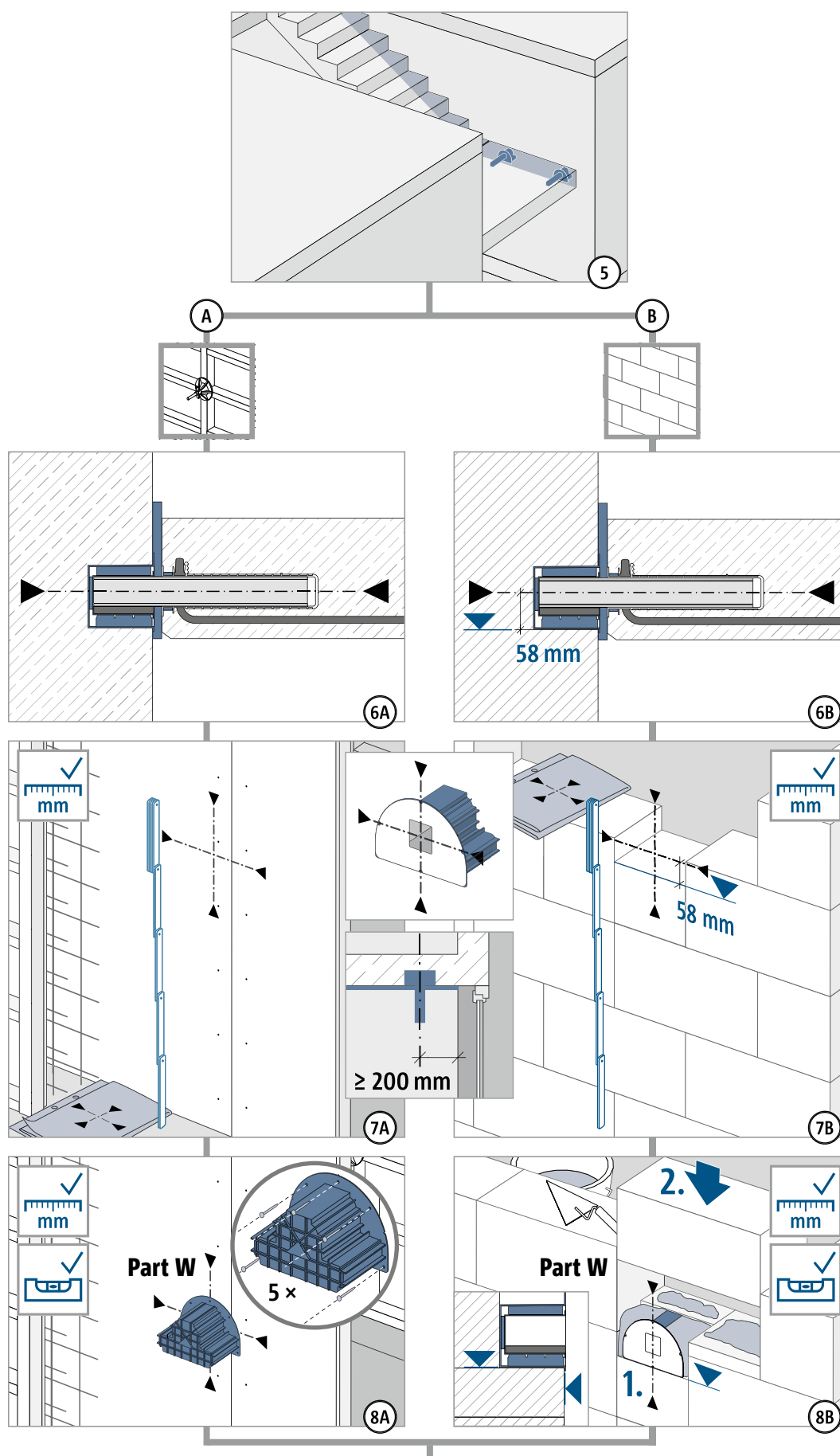


⚠ AVERTISSEMENT

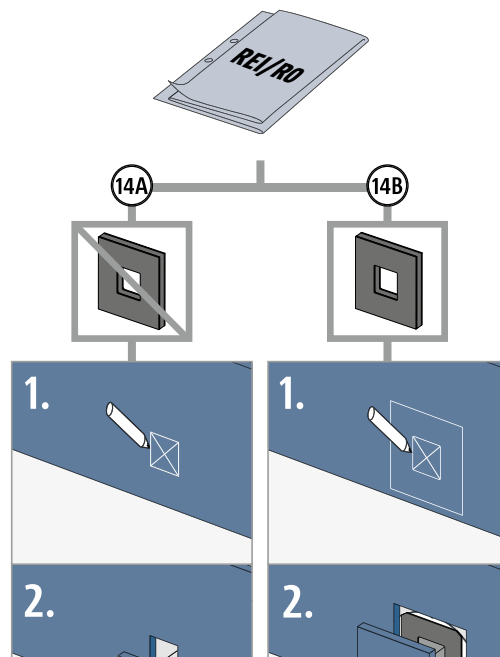
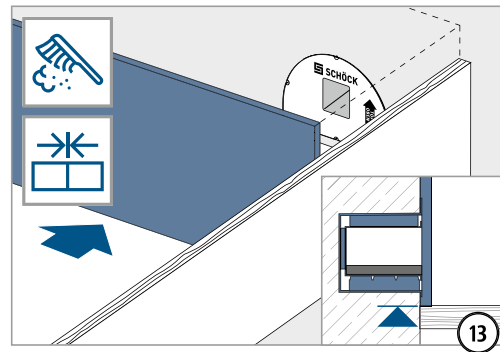
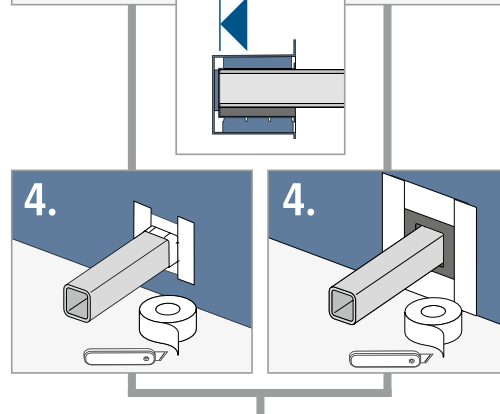
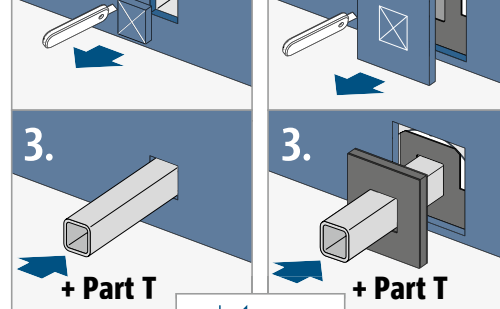
Risque de chute d'élément en cas de montage incomplet ! Toutes les pièces Tronsole® type P (pièce W + T + H) doivent être utilisées.



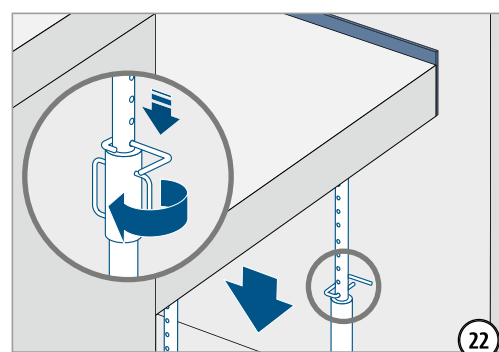
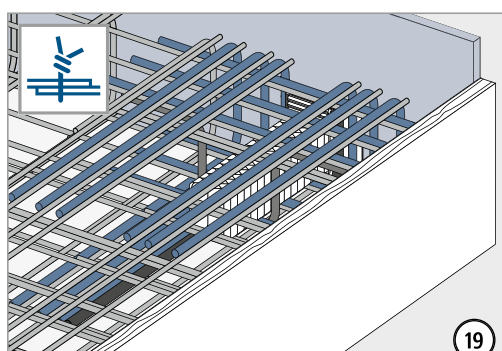
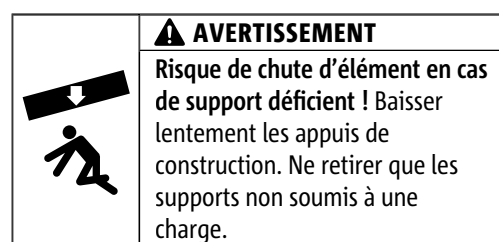
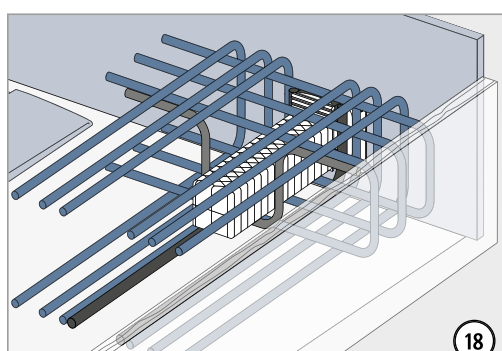
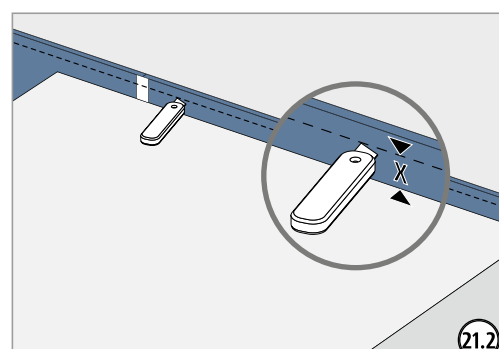
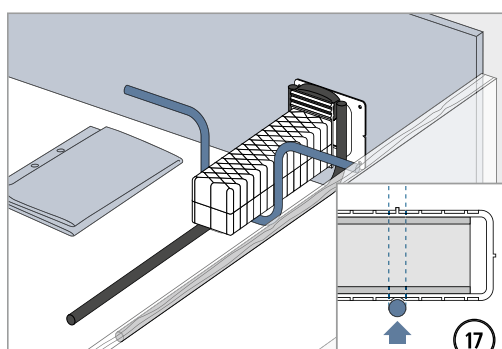
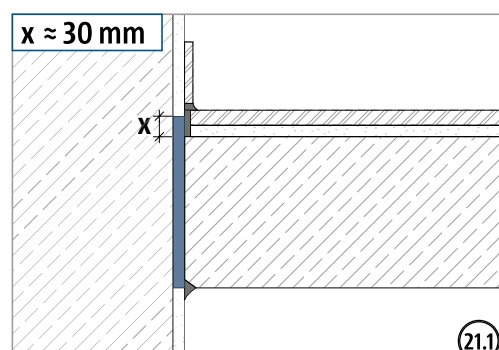
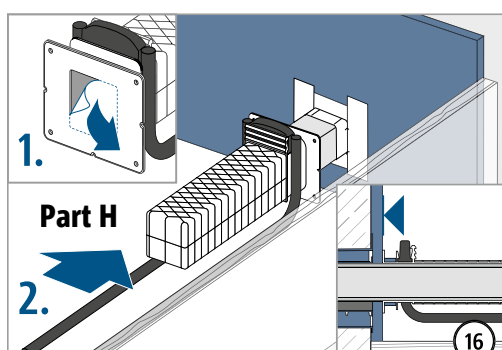
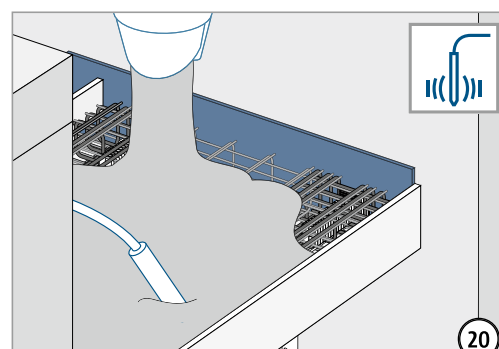
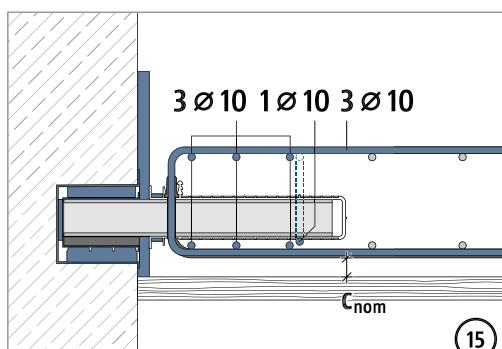
Instructions de mise en œuvre – chantier, béton coulé sur place



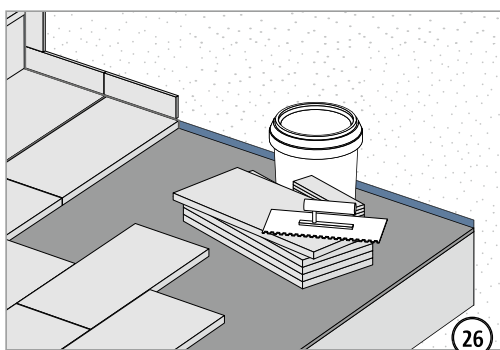
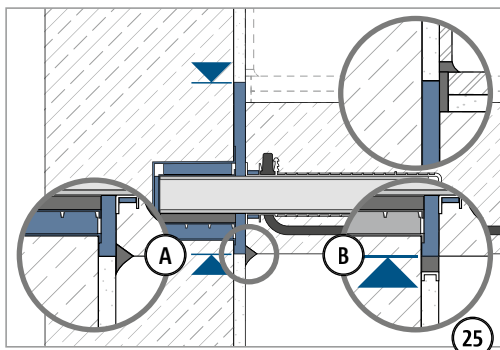
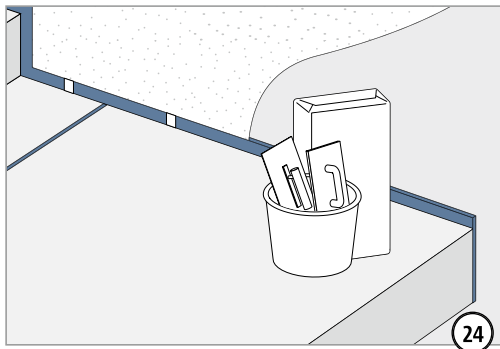
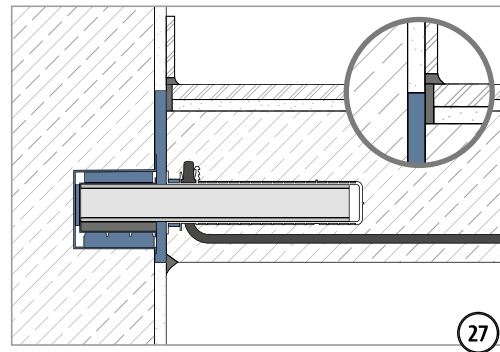
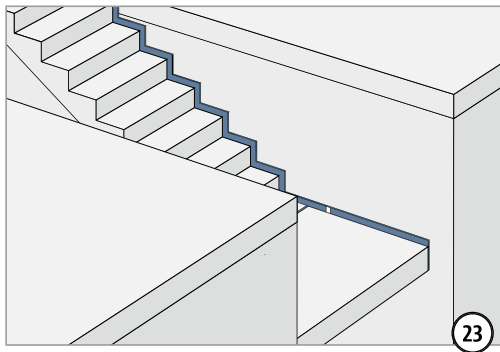
50

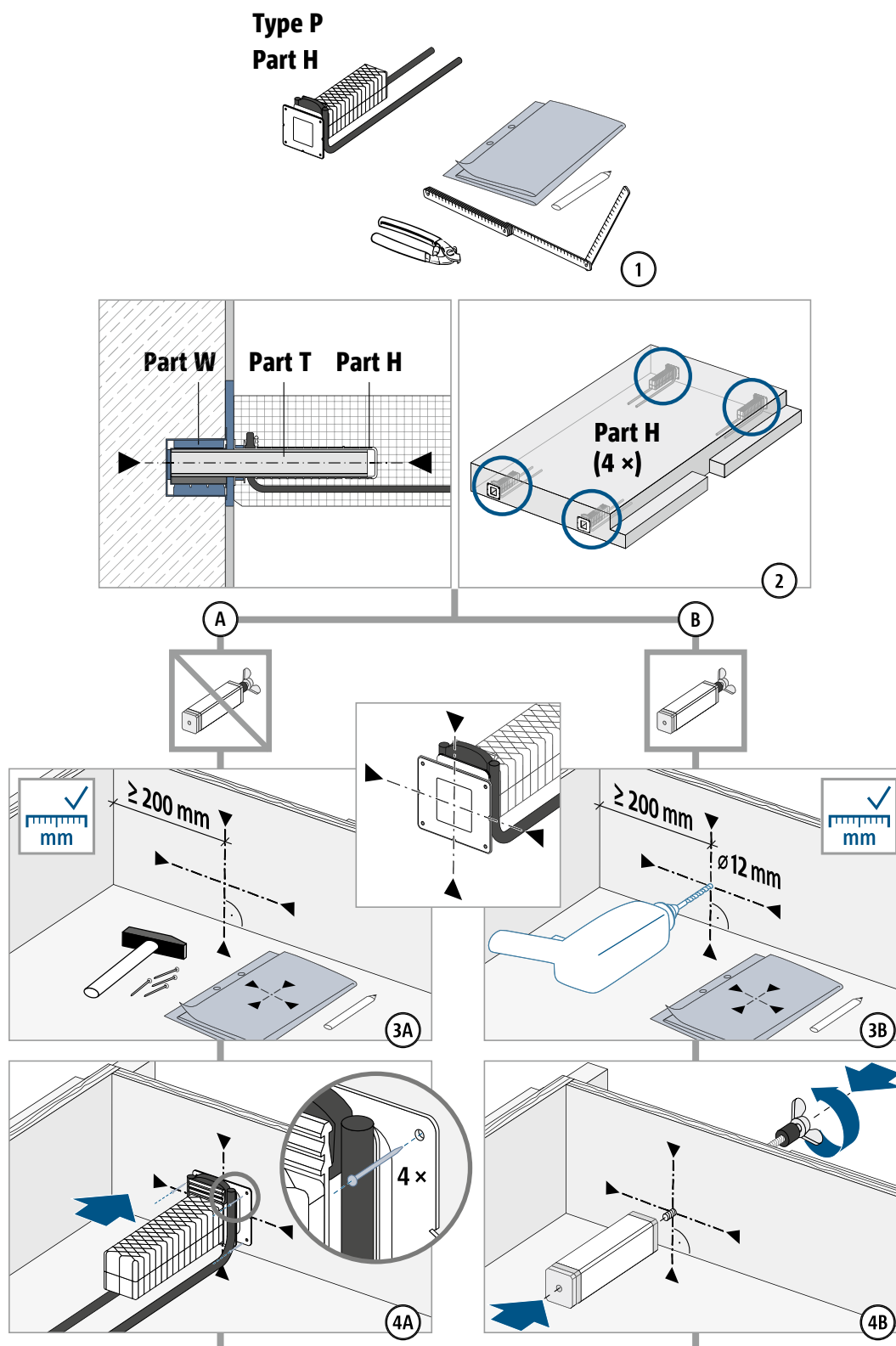
Instructions de mise en œuvre – chantier, béton coulé sur place



Instructions de mise en œuvre – chantier, béton coulé sur place

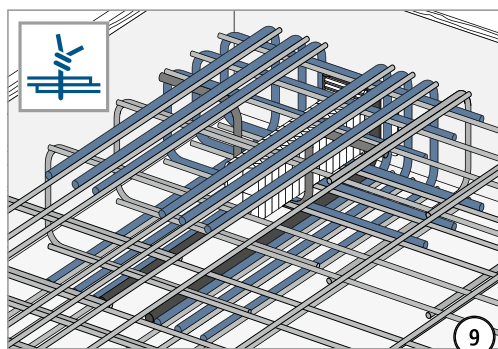
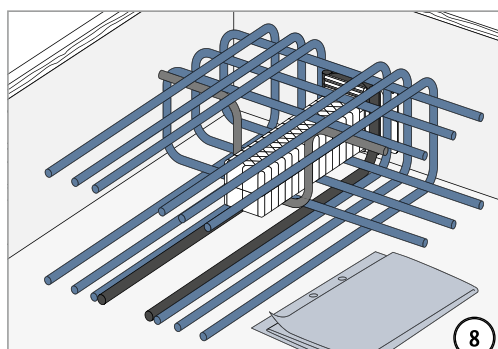
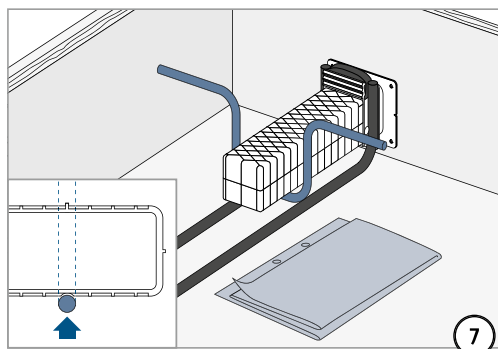
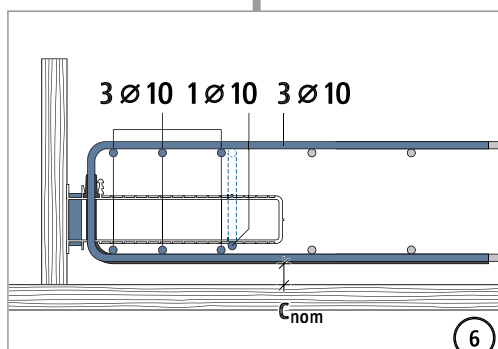
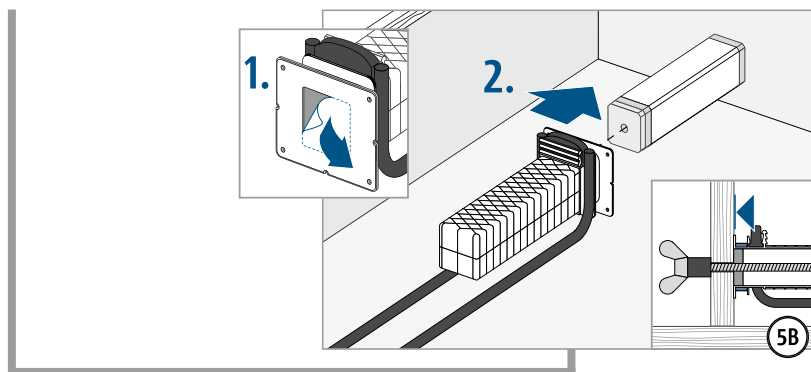


Instructions de mise en œuvre – ouvrage préfabré

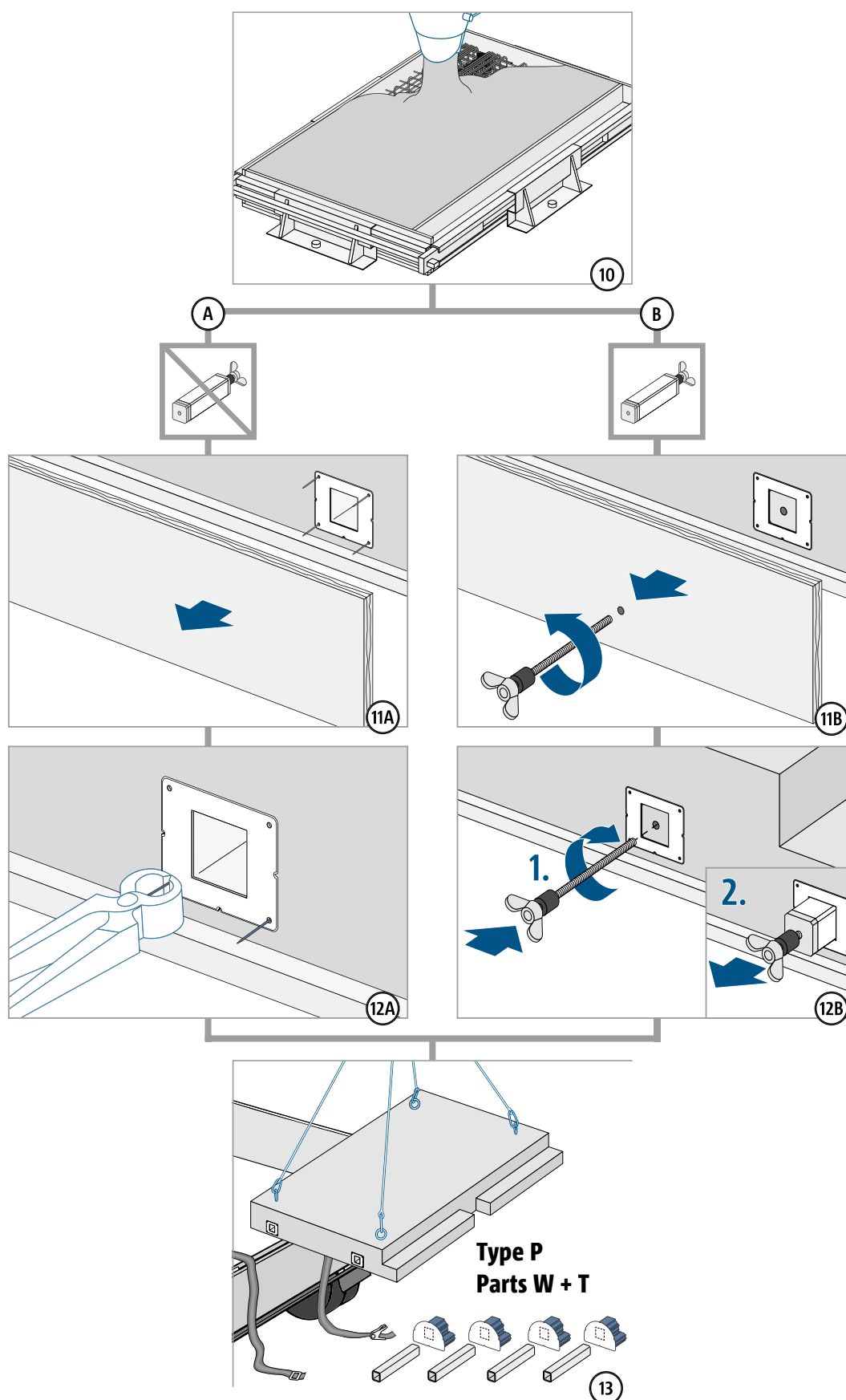


P

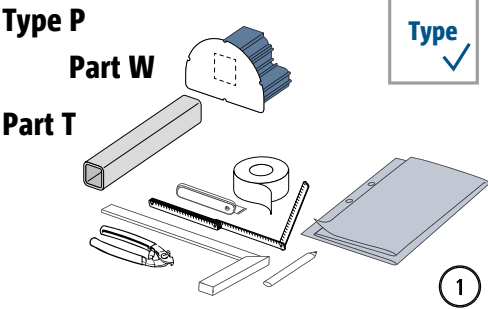
Instructions de mise en œuvre – ouvrage préfabriqué



Instructions de mise en œuvre – ouvrage préfabré



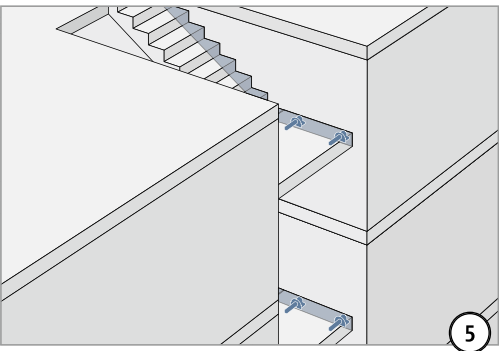
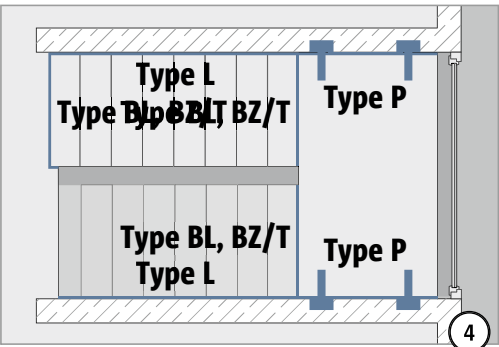
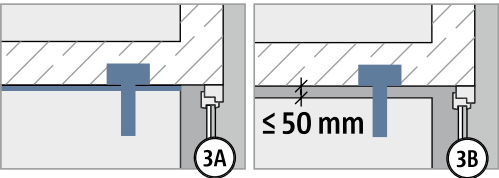
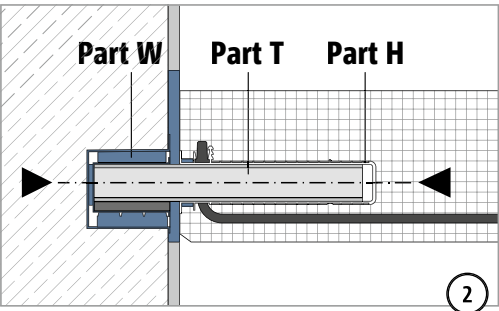
Instructions de mise en œuvre – élément préfabriqué chantier





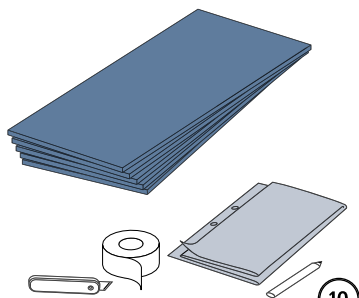
⚠ AVERTISSEMENT

Risque de chute d'élément en cas de montage incomplet ! Toutes les pièces Tronsole® type P (pièce W + T) doivent être utilisées.

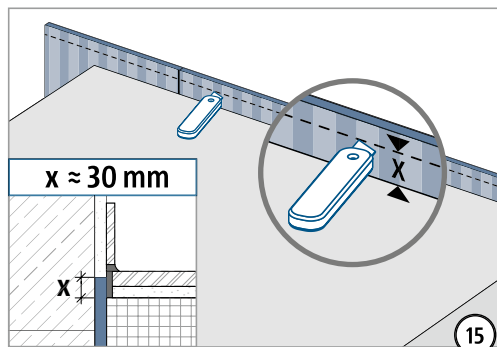


Instructions de mise en œuvre – élément préfabriqué chantier

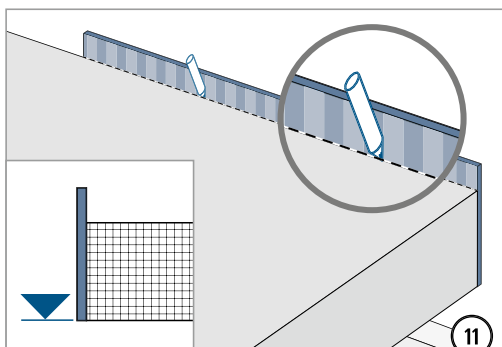
Type L



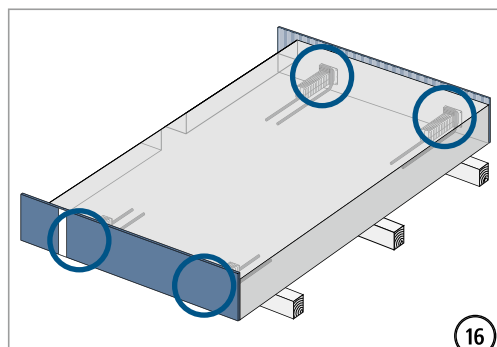
10



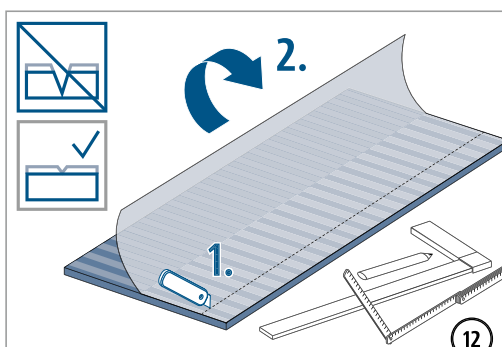
15



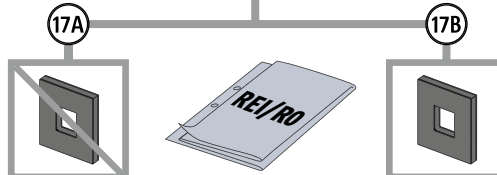
11



16

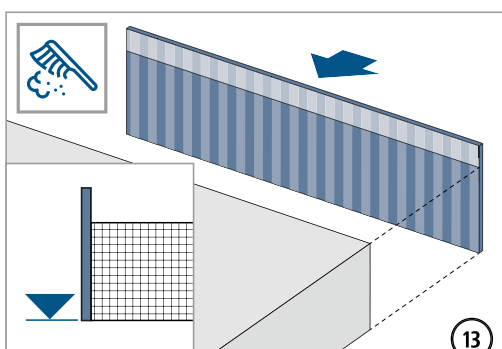


12

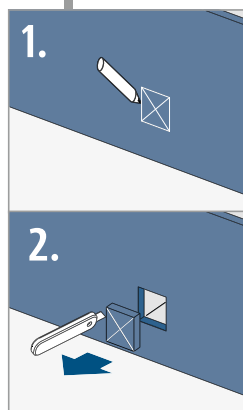


17A

17B

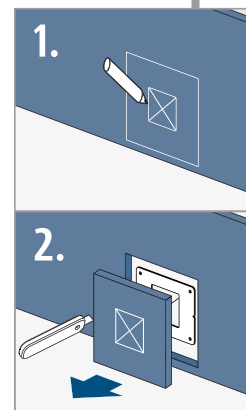


13



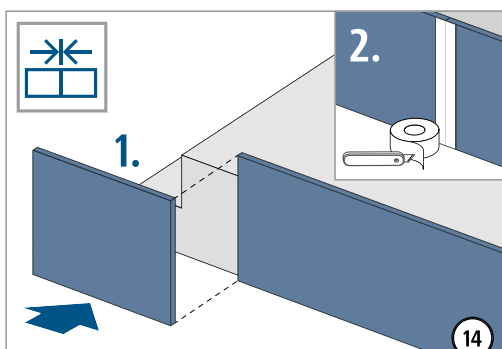
1.

2.



1.

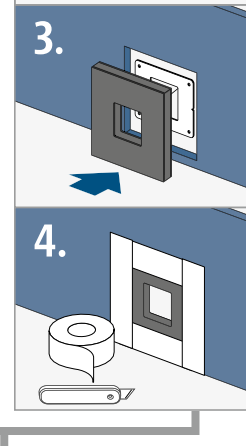
2.



1.

2.

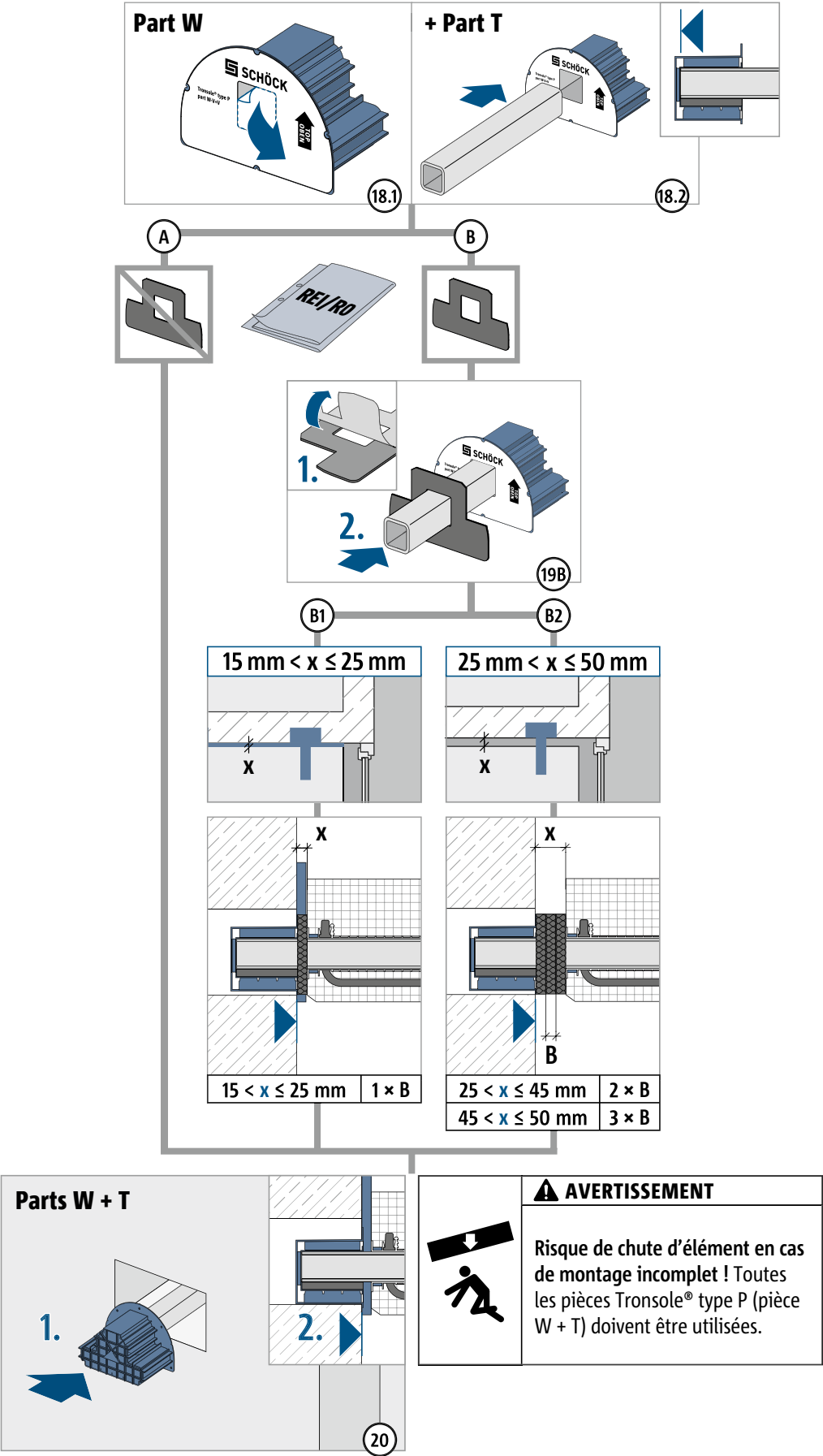
14



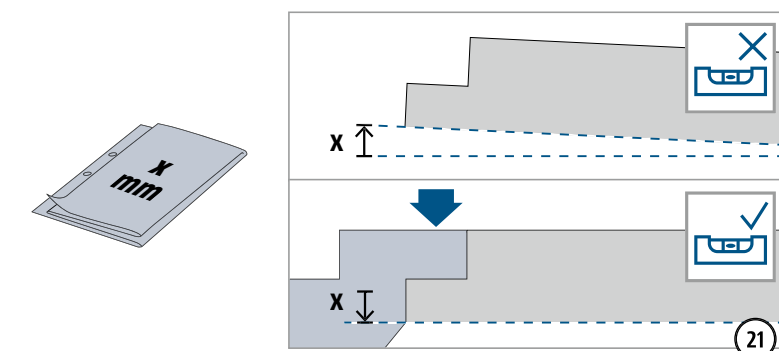
3.

4.

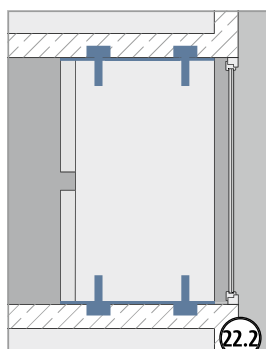
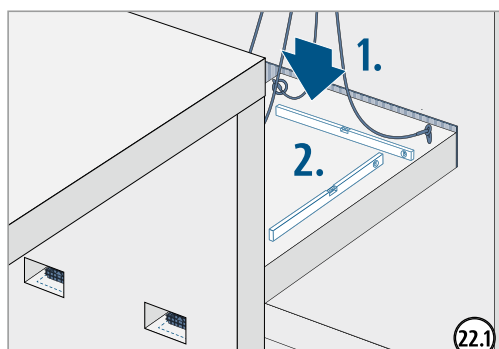
Instructions de mise en œuvre – élément préfabriqué chantier



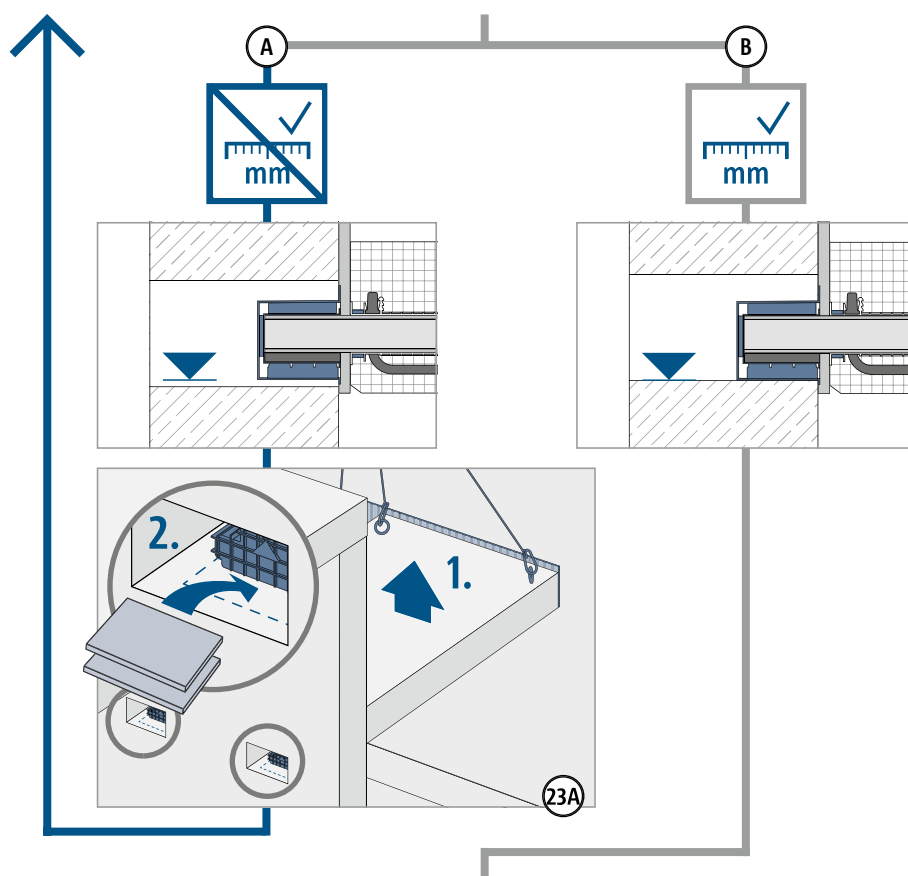
Instructions de mise en œuvre – élément préfabriqué chantier



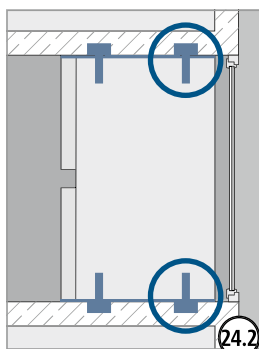
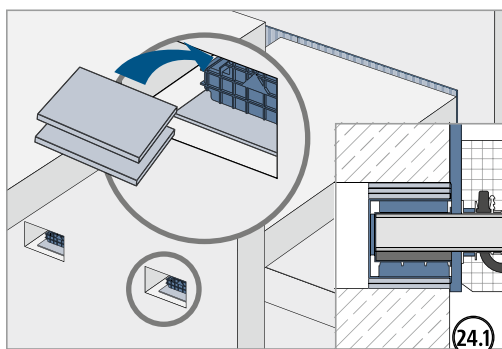
Surélever le palier
conformément au plan
d'ouvrage.



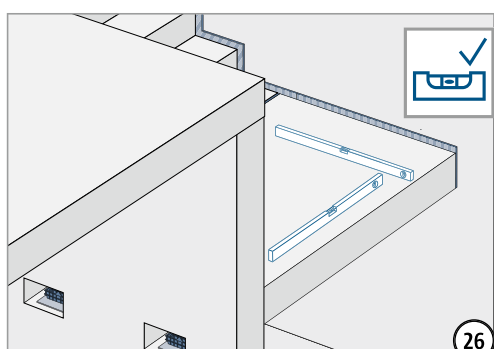
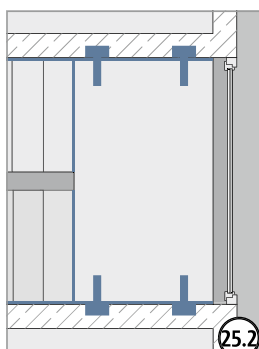
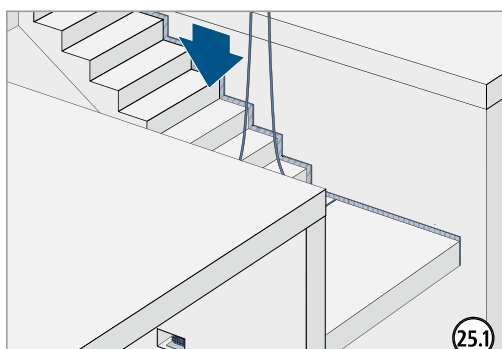
Après le montage de l'élément mural Tronsole® type P pièce W, la hauteur de palier doit être ajustée à l'aide de **plaques de compensation** résistantes à la pression (par exemple en acier, taille minimale 180 × 120 mm).



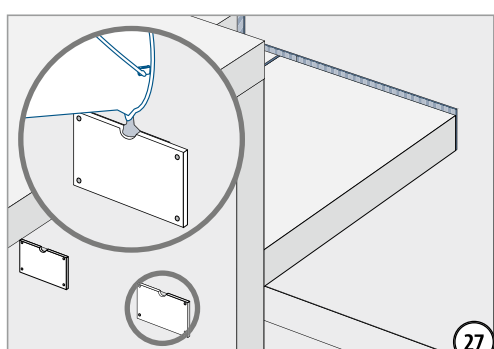
Instructions de mise en œuvre – élément préfabriqué chantier



Utilisation de **plaques de compensation** résistantes à la pression (par ex. acier, dimensions minimales 180 × 120 mm) en haut sur l'élément mural Tronsole® type P part W protégeant du relevage du palier.



Vérifier que le palier est bien posé à l'horizontale une fois que les volées d'escaliers ont été placées.



Instructions de mise en œuvre – élément préfabriqué chantier

