

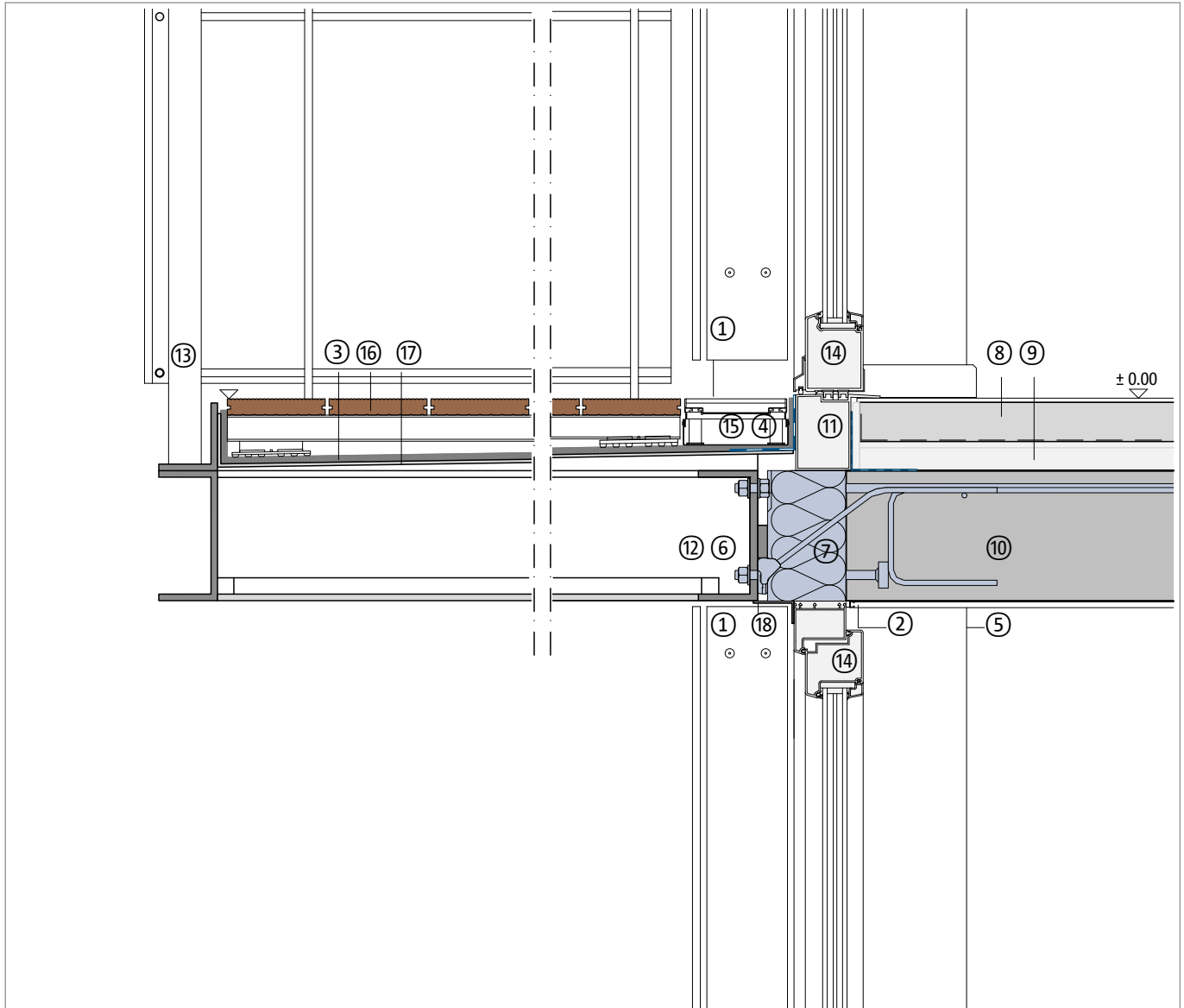
Thermally separated ceiling connector

Steel balcony, cantilevered

Wall with rear-ventilated facade (RVF)

Detailed view above door | below window

DCIK 31-02-TF | M 1 : 10



| Component, example | |
|--------------------|-------------------------------------|
| ① | Rear-ventilated facade (RVF) |
| ② | Plastering profile or elastic joint |
| ③ | Drain mat, optional |
| ④ | Insulation |
| ⑤ | Interior plaster |
| ⑥ | Head plate with cleat |
| ⑦ | Schöck Isokorb® XT type SK |
| ⑧ | Floor covering, floating screed |
| ⑨ | Impact sound and thermal insulation |

| Component, example | |
|--------------------|--|
| ⑩ | Reinforced concrete ceiling |
| ⑪ | Threshold, thermally insulated |
| ⑫ | Steel profiles with corrosion protection |
| ⑬ | Railing |
| ⑭ | Window element, door element |
| ⑮ | Facade channel |
| ⑯ | Wooden floorboards, substructure, support system |
| ⑰ | Sloped aluminum tray |
| ⑱ | Cover angle, aluminum |

Note: This detailed view is a general, non-binding planning proposal which only provides a schematic overview of the construction work. The planner and processor are responsible for checking applicability and completeness for each construction project. Adjacent components are only shown schematically. All specifications and assumptions must be adapted or coordinated to local conditions. The respective technical specifications of the data sheets, processing guidelines, standards, and system approvals must be observed. Balconies, arcades, and canopies require their own statics.