

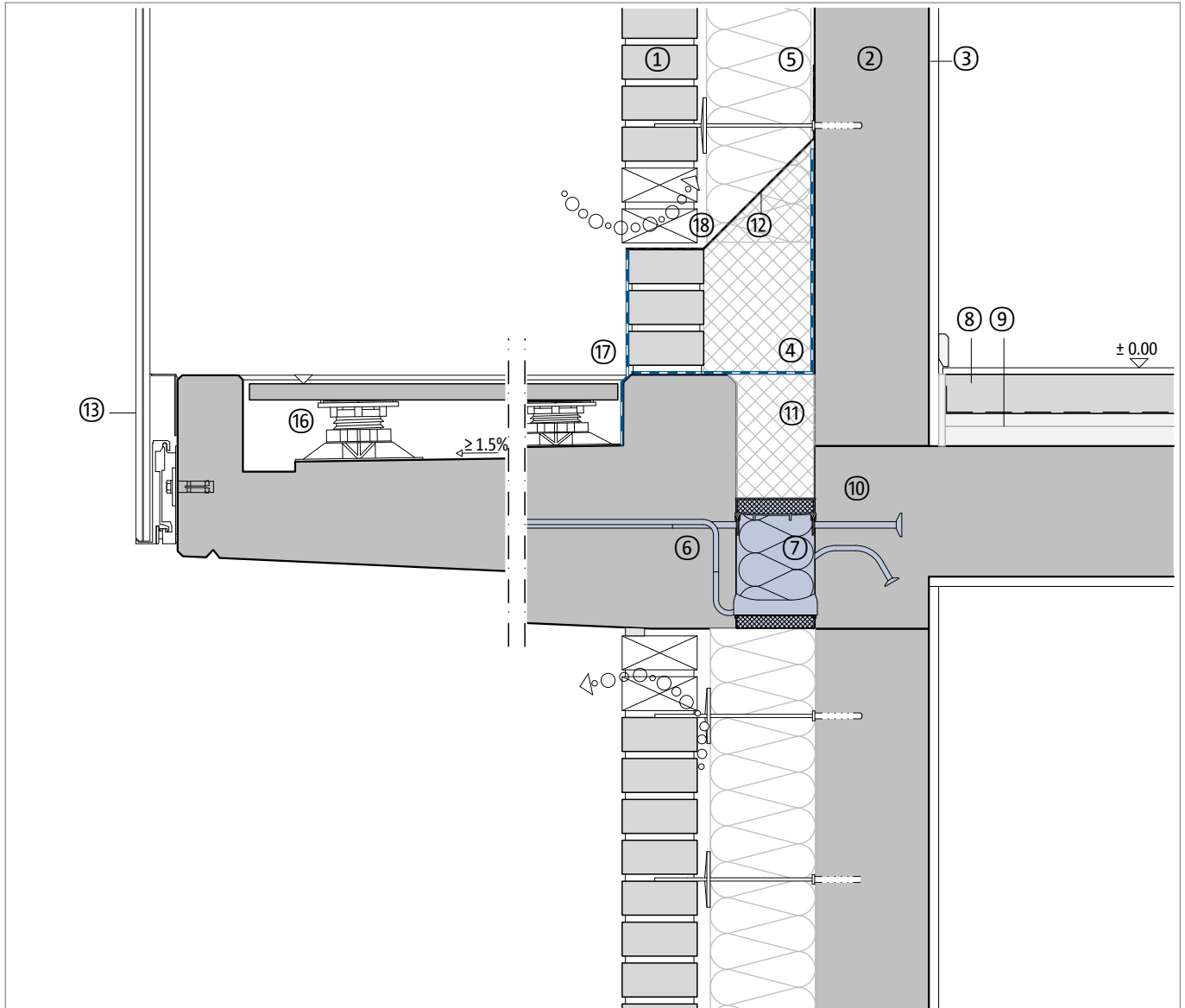
## Thermally separated ceiling connector

Prefabricated reinforced concrete balcony, downward height offset

Double-wall masonry

Detailed view above wall | below wall

DCIK 19-01-WW | M 1 : 10



| Component, example |  |
|--------------------|--|
| ①                  | Exposed brickwork, clinker                       |
| ②                  | Masonry wall or reinforced concrete wall         |
| ③                  | Interior plaster                                 |
| ④                  | Insulation                                       |
| ⑤                  | Thermal insulation, mineral wool                 |
| ⑥                  | Precast reinforced concrete, waterproof concrete |
| ⑦                  | Schöck Isokorb® XT type K-U                      |
| ⑧                  | Floor covering, floating screed                  |
| ⑨                  | Impact sound and thermal insulation              |

| Component, example |                             |
|--------------------|-----------------------------|
| ⑩                  | Reinforced concrete ceiling |
| ⑪                  | Perimeter insulation, XPS   |
| ⑫                  | Masonry barrier             |
| ⑬                  | Railing                     |
| ⑭                  | Rear ventilation            |
| ⑮                  | Air layer anchor            |
| ⑯                  | Slab with support system    |
| ⑰                  | Moisture protection         |
| ⑱                  | Rear ventilation            |

Note: This detailed view is a general, non-binding planning proposal which only provides a schematic overview of the construction work. The planner and processor are responsible for checking applicability and completeness for each construction project. Adjacent components are only shown schematically. All specifications and assumptions must be adapted or coordinated to local conditions. The respective technical specifications of the data sheets, processing guidelines, standards, and system approvals must be observed. Balconies, arcades, and canopies require their own statics.