

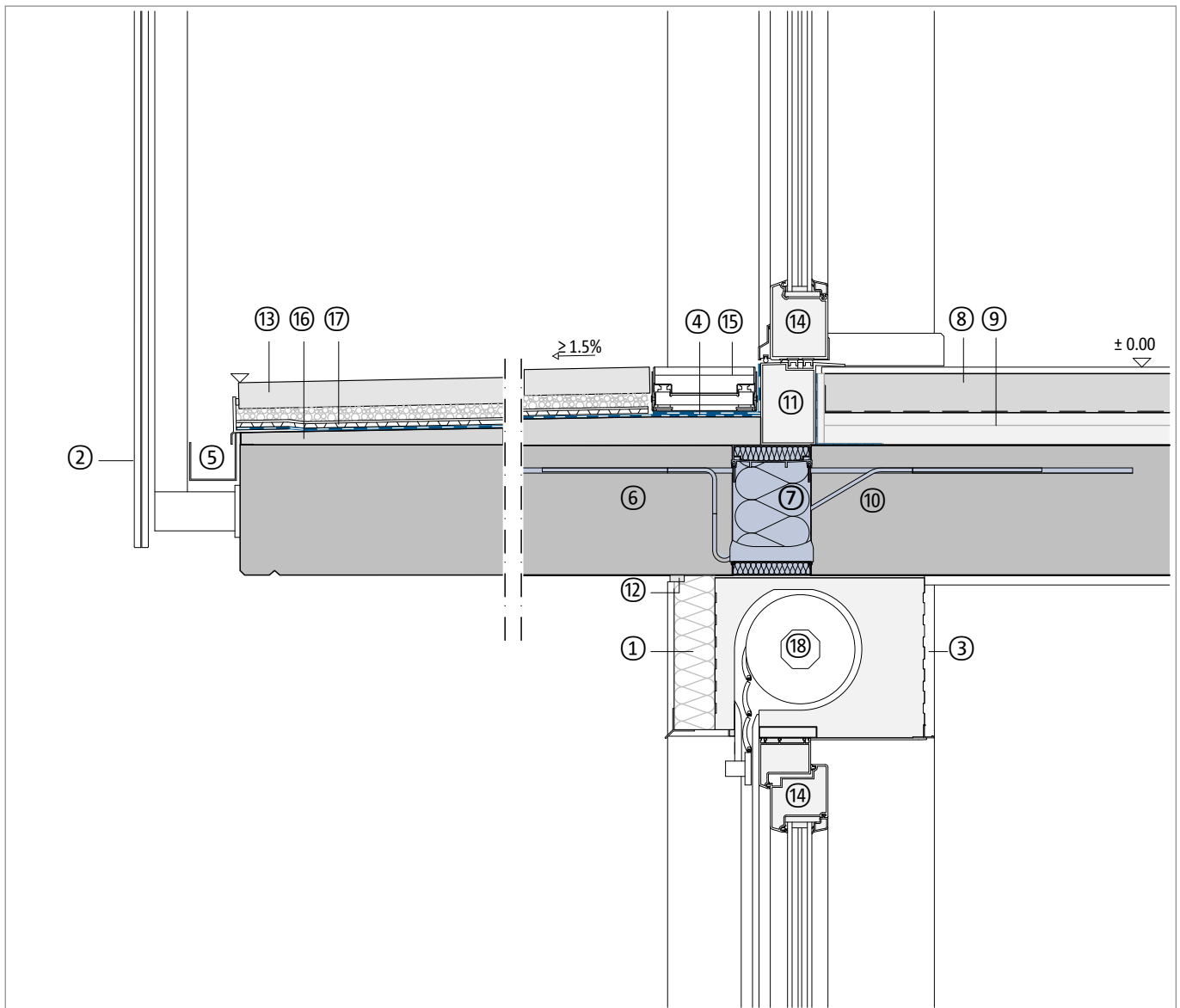
Thermally separated ceiling connector

Reinforced concrete slab with superstructure, cantilevered

Exterior wall with thermal insulation composite system

Detailed view above door | under window with roller shutter

DCIK 05-03-TFR | M 1 : 10



| Component, example | |
|--------------------|--|
| ① | Thermal insulation composite system |
| ② | Railing |
| ③ | Interior plaster |
| ④ | Insulation |
| ⑤ | Edge finish: Channel, gravel trap, inlet plate |
| ⑥ | Reinforced concrete slab |
| ⑦ | Schöck Isokorb® XT type K |
| ⑧ | Floor covering, floating screed |
| ⑨ | Impact sound and thermal insulation |

| Component, example | |
|--------------------|---|
| ⑩ | Reinforced concrete ceiling |
| ⑪ | Threshold, thermally insulated |
| ⑫ | Plastering profile, joint sealing tape |
| ⑬ | Slab in gravel bed |
| ⑭ | Window element, door element |
| ⑮ | Facade channel |
| ⑯ | Sloping wedge (e.g., bonded screed) |
| ⑰ | Drain mat with fleece |
| ⑱ | Roller shutter, thermally insulated box |

Note: This detailed view is a general, non-binding planning proposal which only provides a schematic overview of the construction work. The planner and processor are responsible for checking applicability and completeness for each construction project. Adjacent components are only shown schematically. All specifications and assumptions must be adapted or coordinated to local conditions. The respective technical specifications of the data sheets, processing guidelines, standards, and system approvals must be observed. Balconies, arcades, and canopies require their own statics.